



IATA Clearing House

Compatibility Settings Internet Explorer 5.5 & 6.0 & 7.0 for Windows XP (SP1 & SP2)

Revision: 0.6

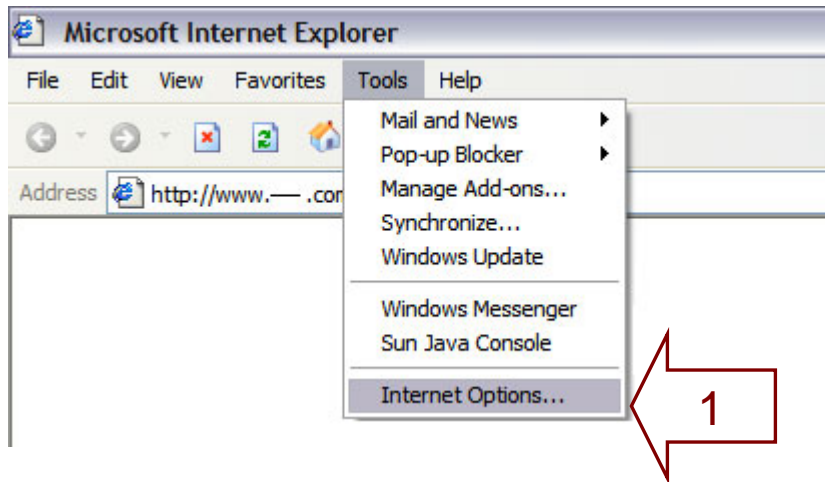
Updated on: March 9, 2007

Prepared by: International Air Transport Association

1.0 Compatibility Settings Internet Explorer 5.5 & 6.0 & 7.0 for Windows XP (SP1 & SP2)

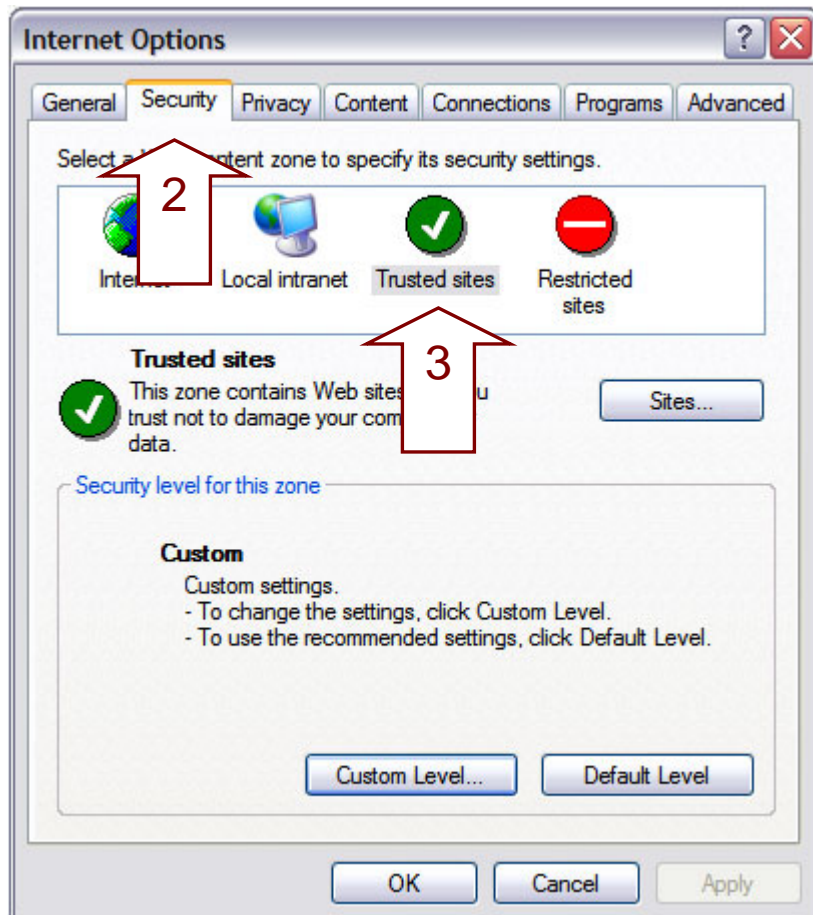
In case of connection problems with the ICH Web, we suggest using the following settings in Internet Explorer.

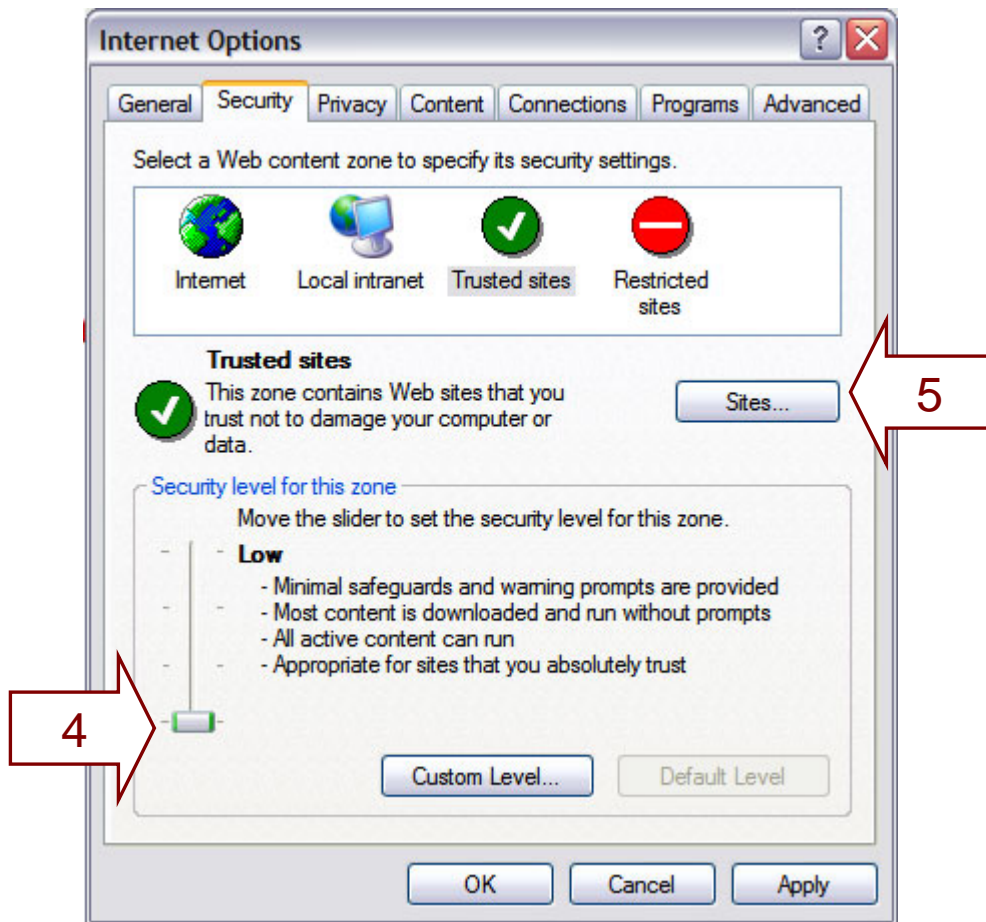
1) In Internet Explorer, go in the menu bar to “Tools” then choose “Internet Options...”



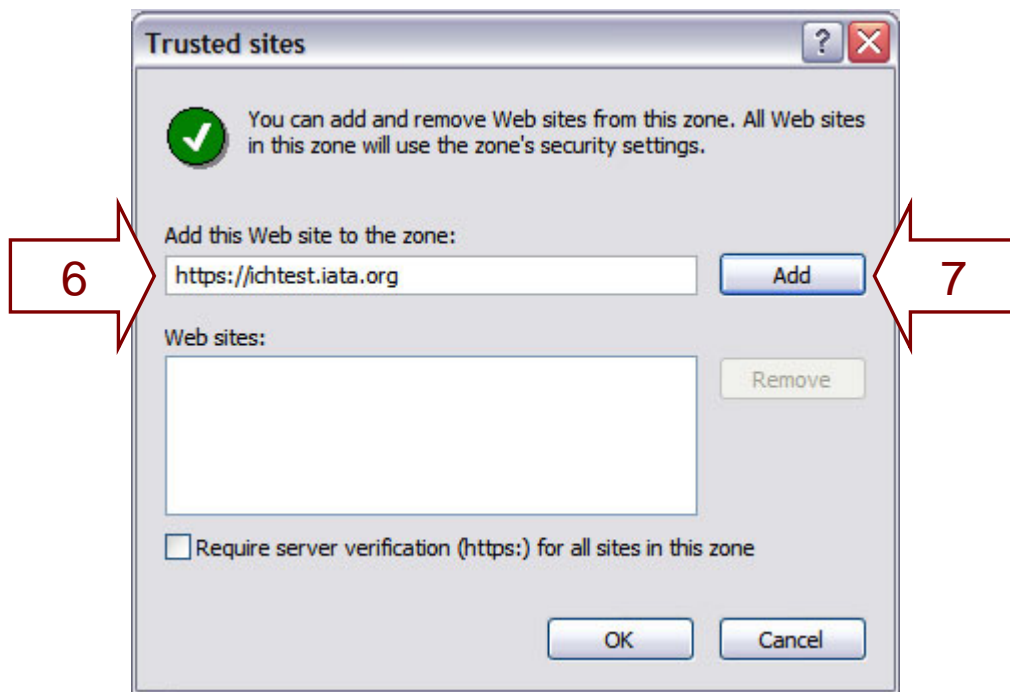
2) Go to the “Security” Tab

3) Click on the “Trusted sites” icon

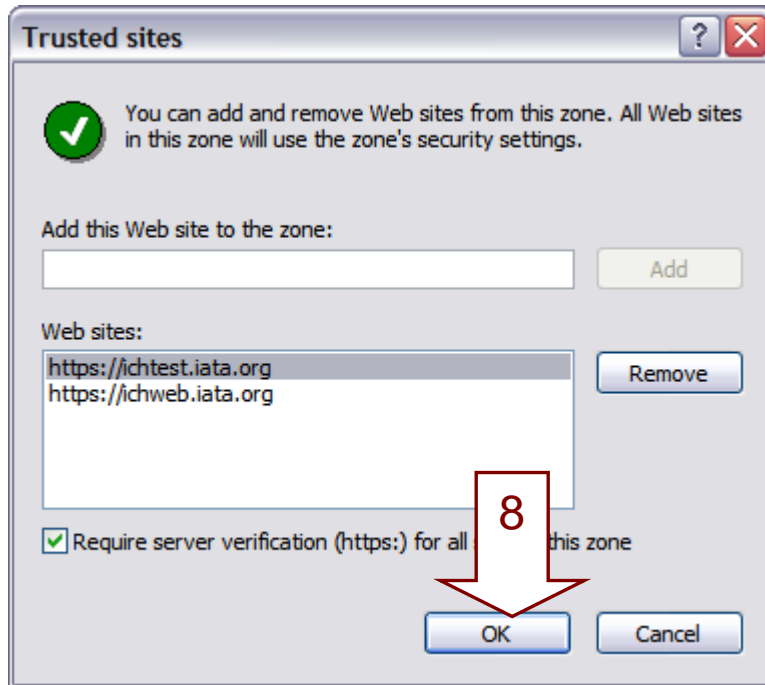




- 4) Make sure the Trusted sites slider is on "Low"
- 5) Click on "Sites"



- 6) Enter `https://ichtest.iata.org` for the test environment and `https://ichweb.iata.org` for the live environment.
- 7) Click "Add" each time to add each website address



8) Click “OK” to accept these changes and return to the Browser and navigate to the Application and verify that these procedures work

In case of prolonged failure, please contact ichsystems@iata.org.