

# C2K Monthly Report

## C2K Monthly Report

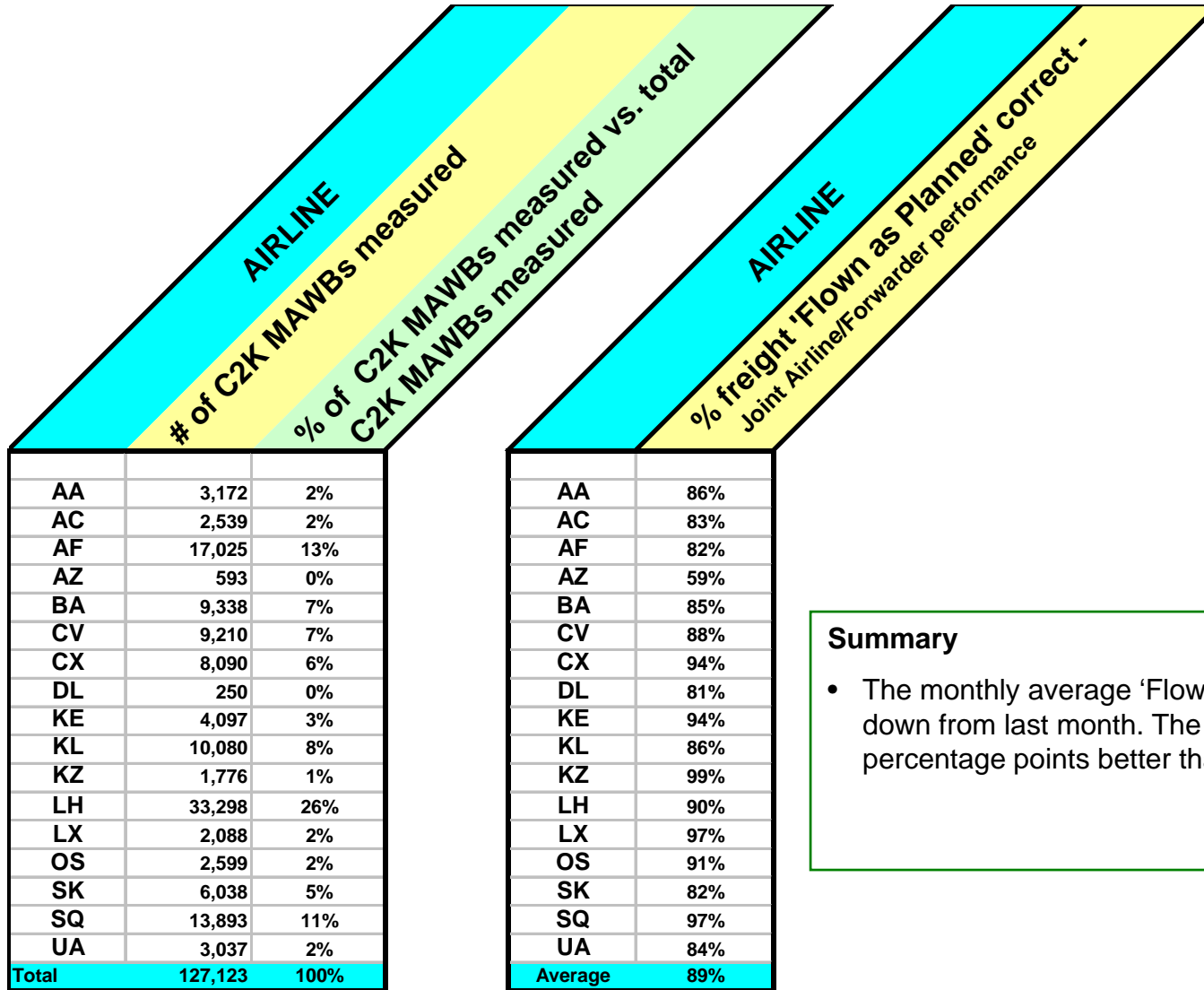
December 2008



SYSTEM WIDE	Actual Month	Difference to previous year
. Number of Lane Segments measured	133,744	+ 29,966
. Number of Route Maps created	1,036,452	+ 110,022
<b>Phase 1</b>		
	Actual Month	Difference to previous year
. Number of shipments measured	127,123	+ 4,920
. Number of Lane Segments measured	28,960	+ 3,602
. Flown as Planned	89%	+ 6 %
. FWB% Correct - Booking quality level & Accuracy of electronic data	88%	- 1 %
. % On Time "Notification of Freight and Documents Availability	84%	+ 10 %

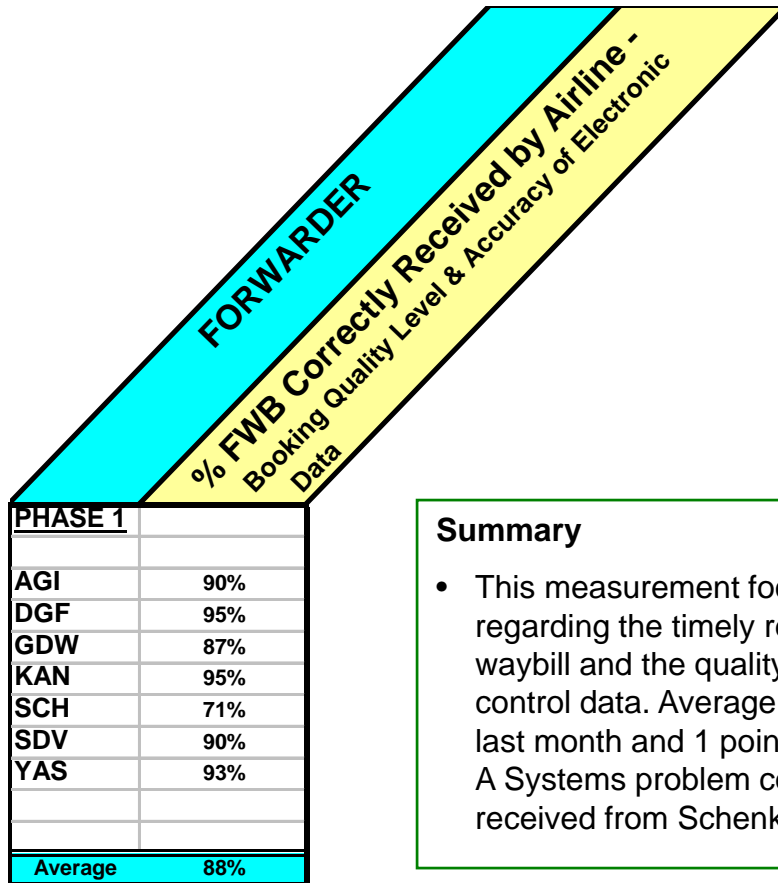
December saw an increase in volumes over November as Member's expanded their reporting activity. Like for Like measures saw an 8% decline in market volume. Total route maps once again exceeded the one million mark. Quality slipped across the board with FWB, FAP & NFD all down one percentage point from last month. All measures show improvement on last year with the exception of FWB which was down 1 percentage point.

**MEDIA ENQUIRIES** All media enquires about this Management Report or Cargo 2000 in general should be directed to:  
Jamie Roche T: +44 1753 621 666 E: [jamie@jamierochepr.co.uk](mailto:jamie@jamierochepr.co.uk)



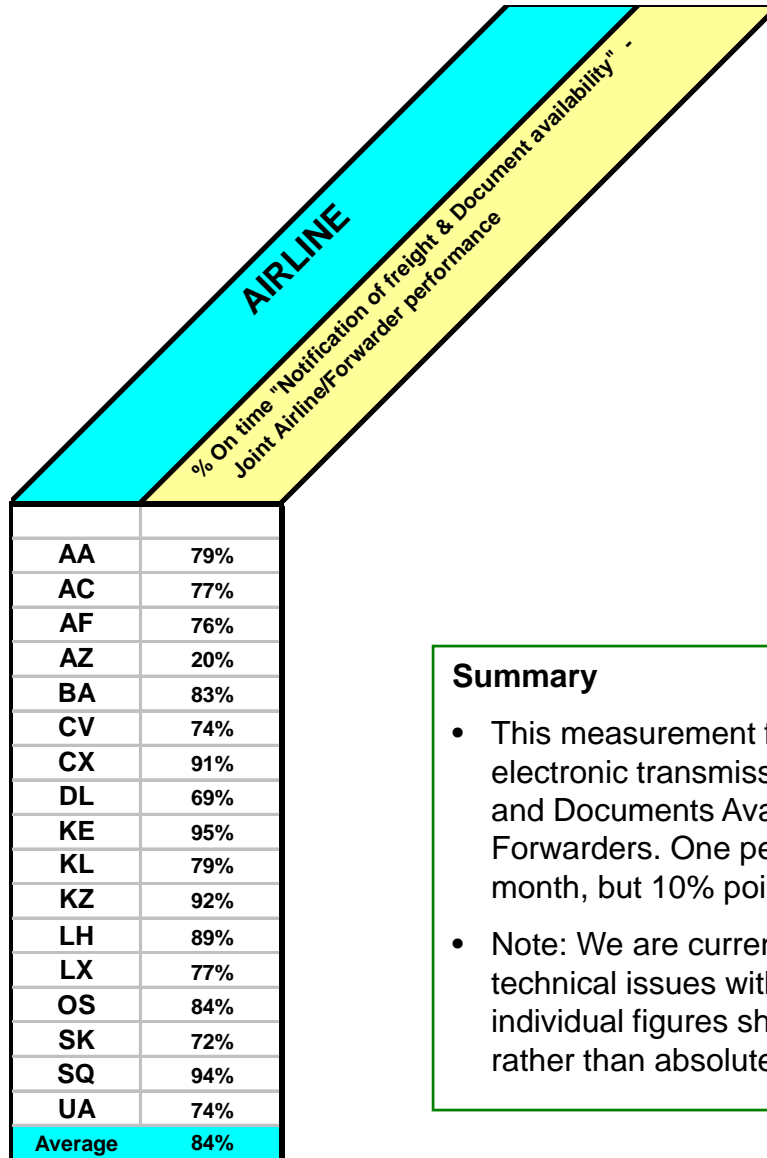
**Summary**

- The monthly average 'Flown as Planned' was 1% down from last month. The 89% score was 6 percentage points better than December 2007.



### Summary

- This measurement focuses on the 'joint' performance regarding the timely receipt of the Electronic Master Air waybill and the quality and accuracy of agreed process control data. Average performance 1 point worse than last month and 1 point worse than this month last year. A Systems problem continued to impact the results received from Schenker in particular this month.

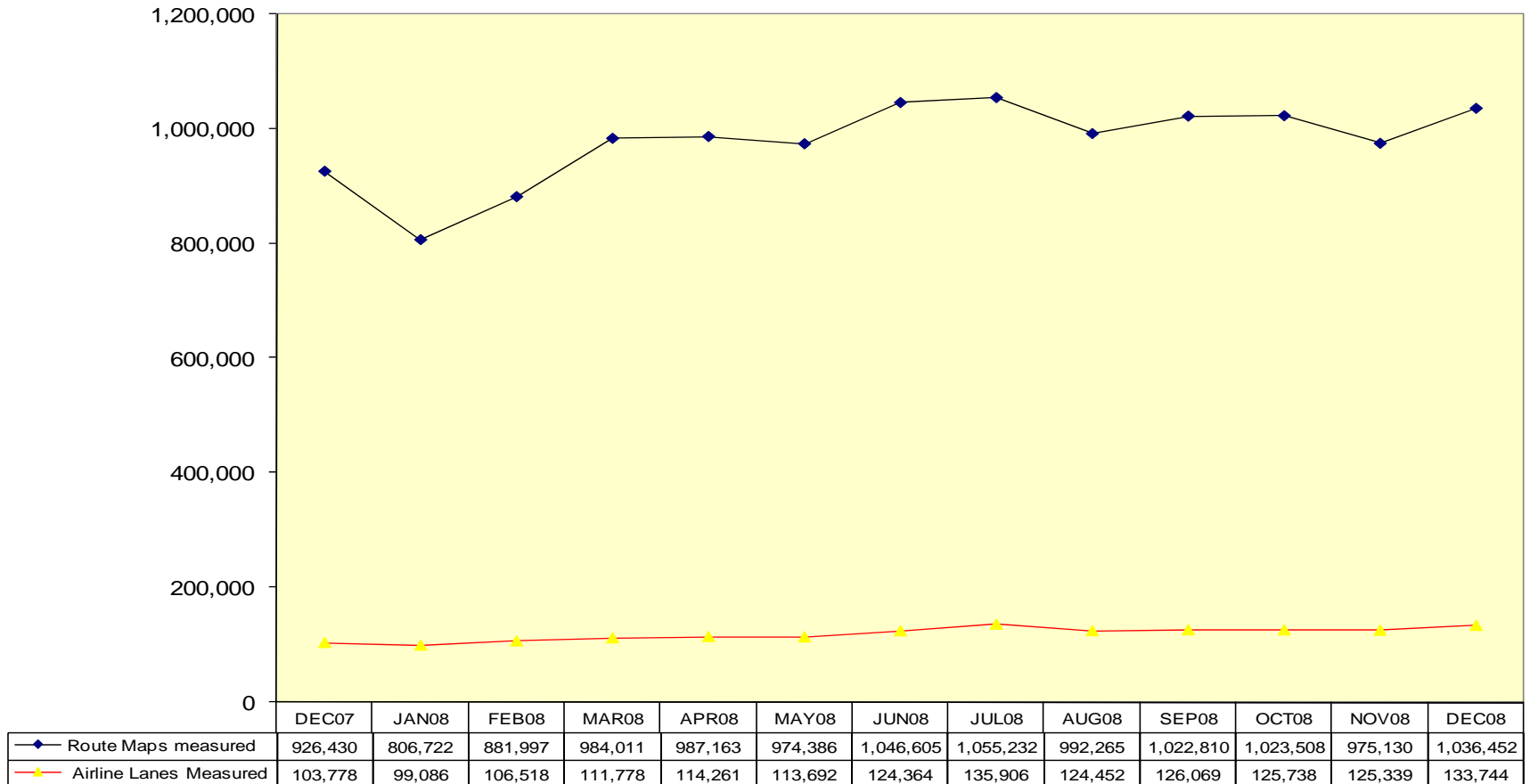


### Summary

- This measurement focuses on the on time electronic transmission of the “Notification of Freight and Documents Availability” sent by Airlines to Forwarders. One percentage point worse than last month, but 10% points better than December 2007.
- Note: We are currently looking at some potential technical issues with this measure, and these individual figures should be considered indicative rather than absolute at this time.



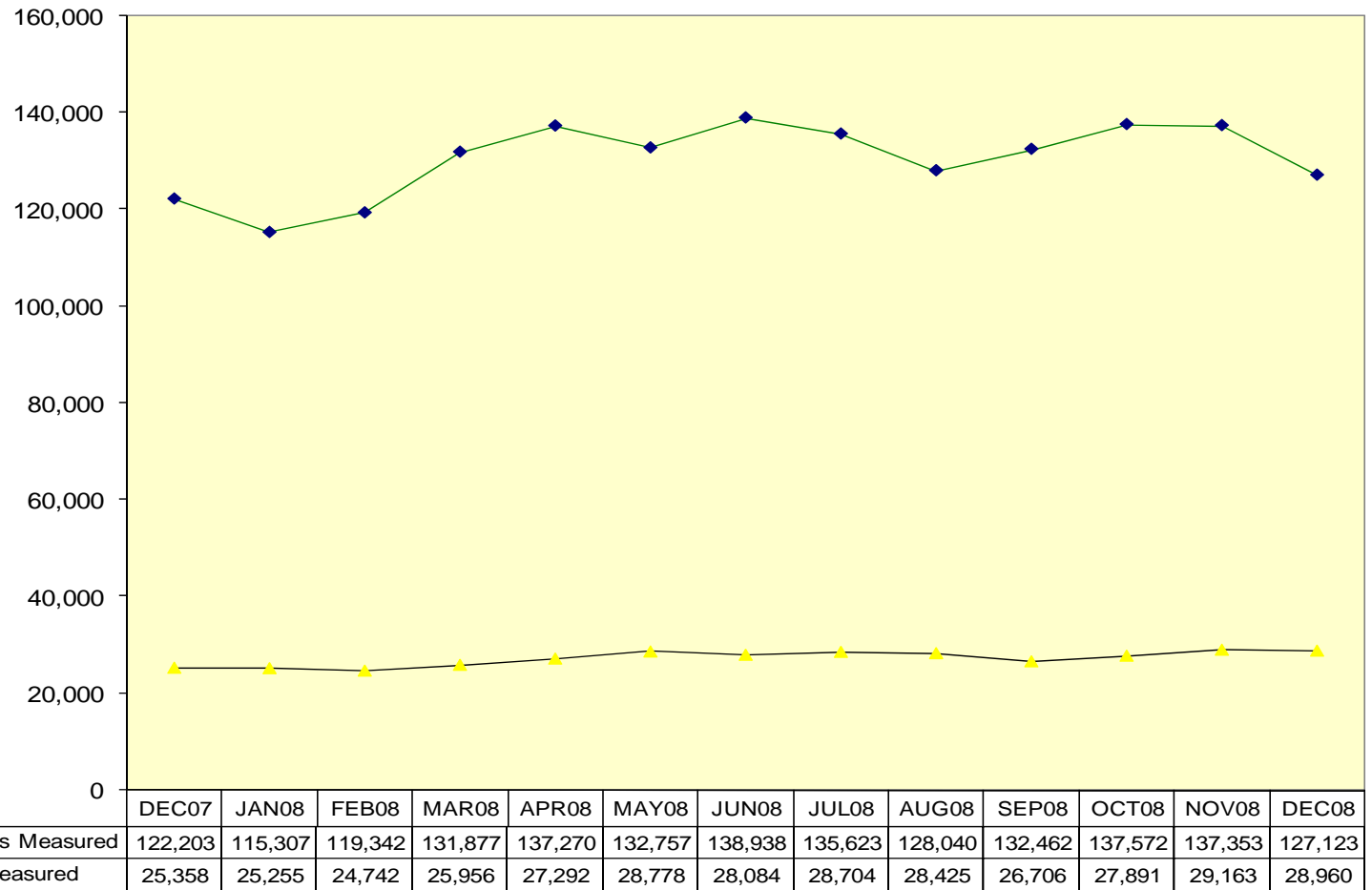
## System-wide Monitoring Scope



**Overall shipments show a 6% month on month increase and a 12% increase over December 2007**



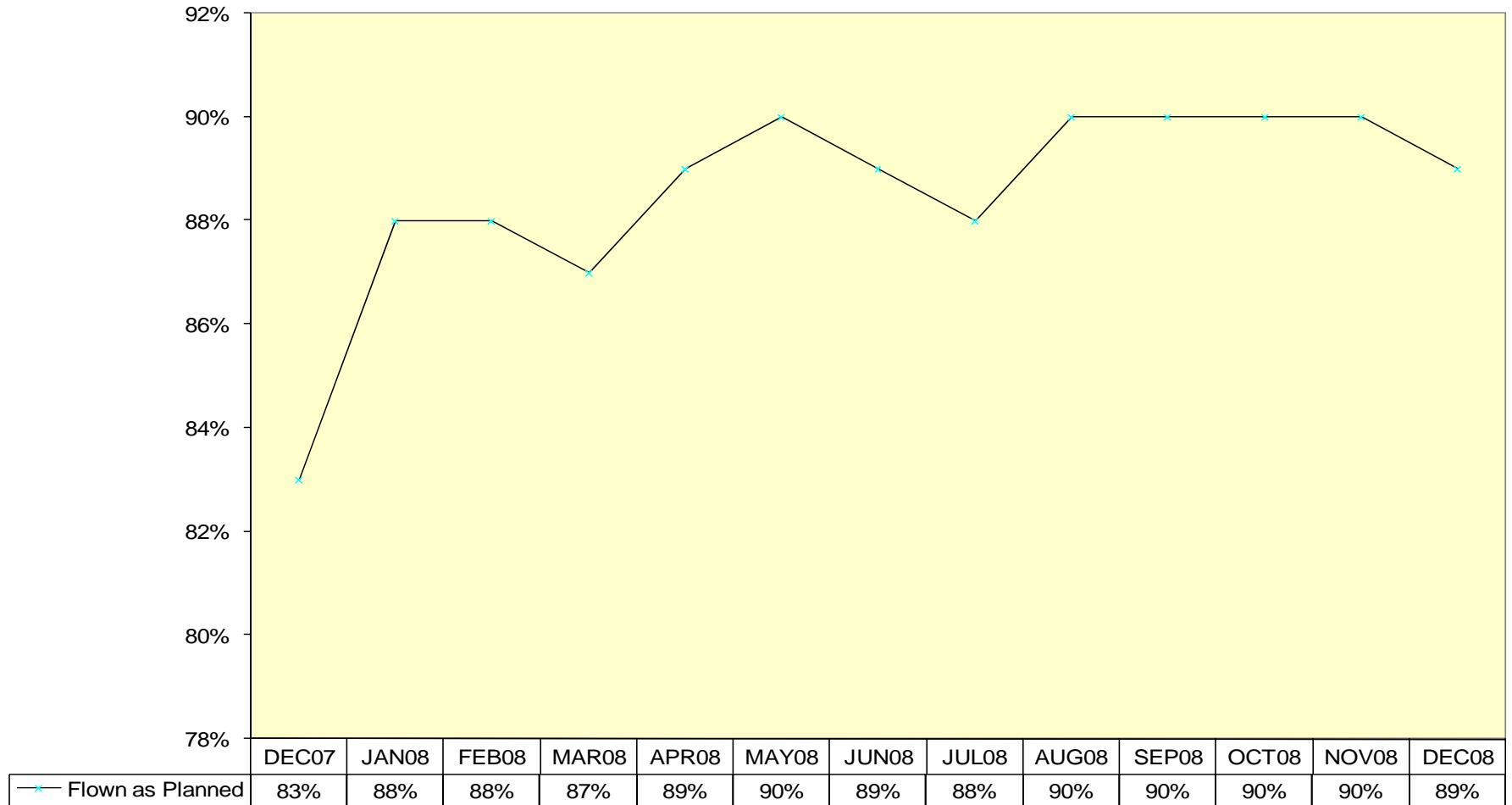
## Phase 1 - Monitoring Scope



**Phase 1 Shipments measured showed a 7% decrease over last month**



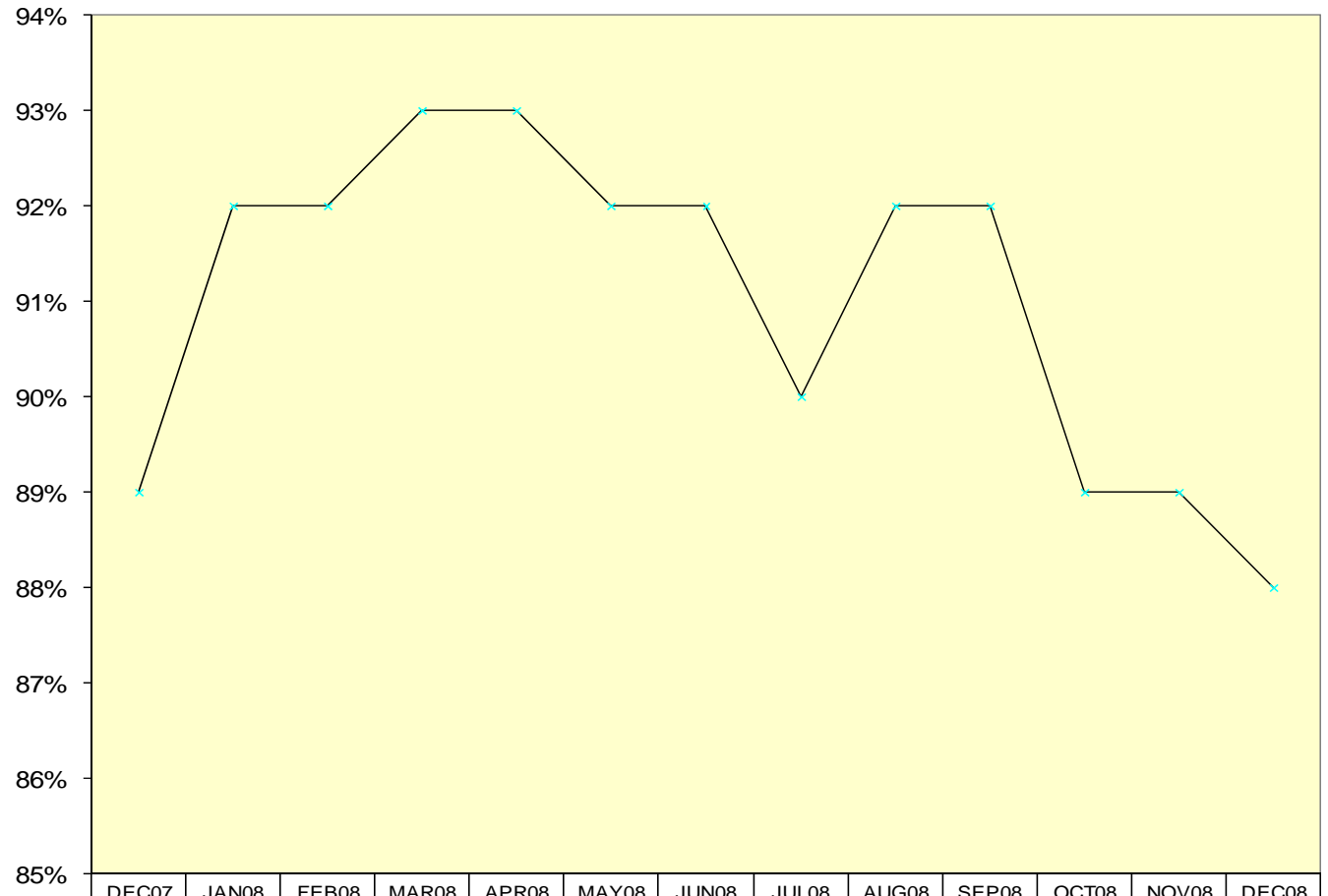
## Phase 1- Airline "Flown As Planned"



**Flown as Planned lost 1 % point this month, falling back from a 12 month high.**



### Forwarder FWB % Correct Received by Airline"

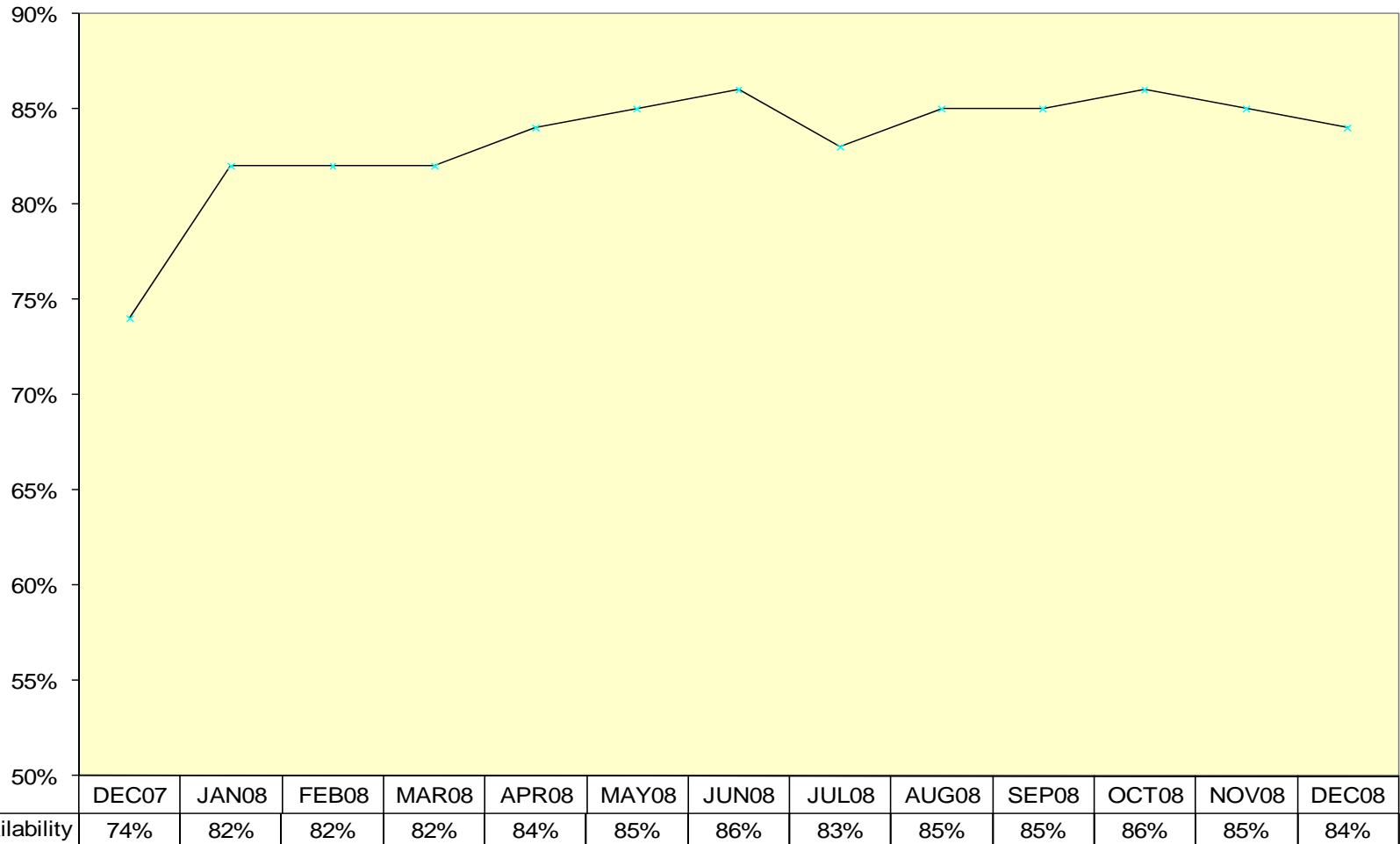


—x— Forwarder FWB% Correct Received by Airlines	DEC07	JAN08	FEB08	MAR08	APR08	MAY08	JUN08	JUL08	AUG08	SEP08	OCT08	NOV08	DEC08
	89%	92%	92%	93%	93%	92%	92%	90%	92%	92%	89%	89%	88%

**A further 1% point deterioration**



## Phase 1- Airline on time "Notification of Freight and Documents' availability"



**A 1 point decrease over last month.**