

C2K Monthly Report

C2K Monthly Report

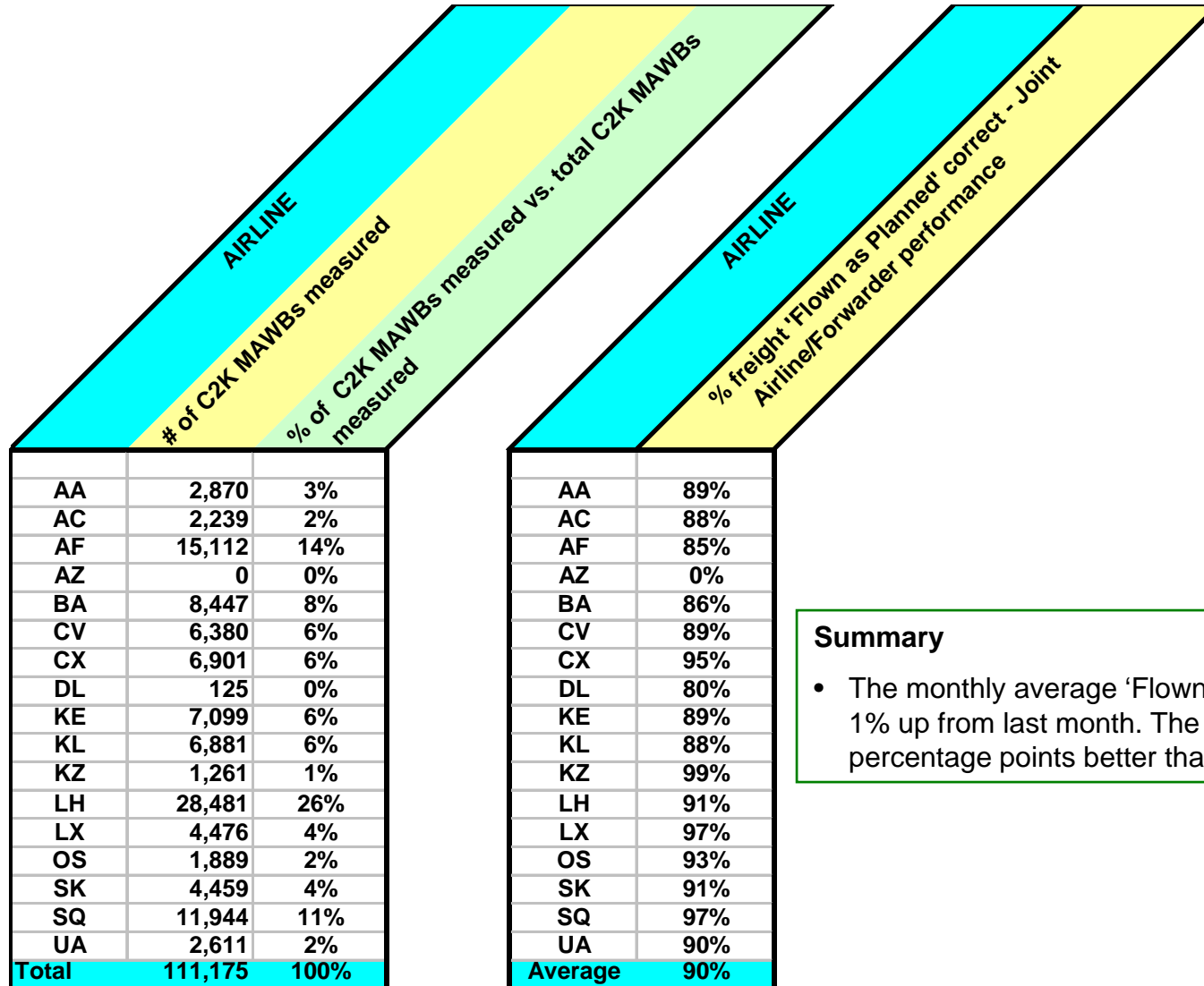
January 2009



SYSTEM WIDE	Actual Month	Difference to previous year
Number of Lane Segments measured	131,013	+ 31,927
Number of Route Maps created	941,993	+ 135,271
Phase 1	Actual Month	Difference to previous year
Number of shipments measured	111,175	- 4,132
Number of Lane Segments measured	26,770	+ 1,412
Flown as Planned	90%	+ 2 %
FWB% Correct - Booking quality level & Accuracy of electronic data	91%	- 1 %
% On Time "Notification of Freight and Documents Availability	86%	+ 4 %

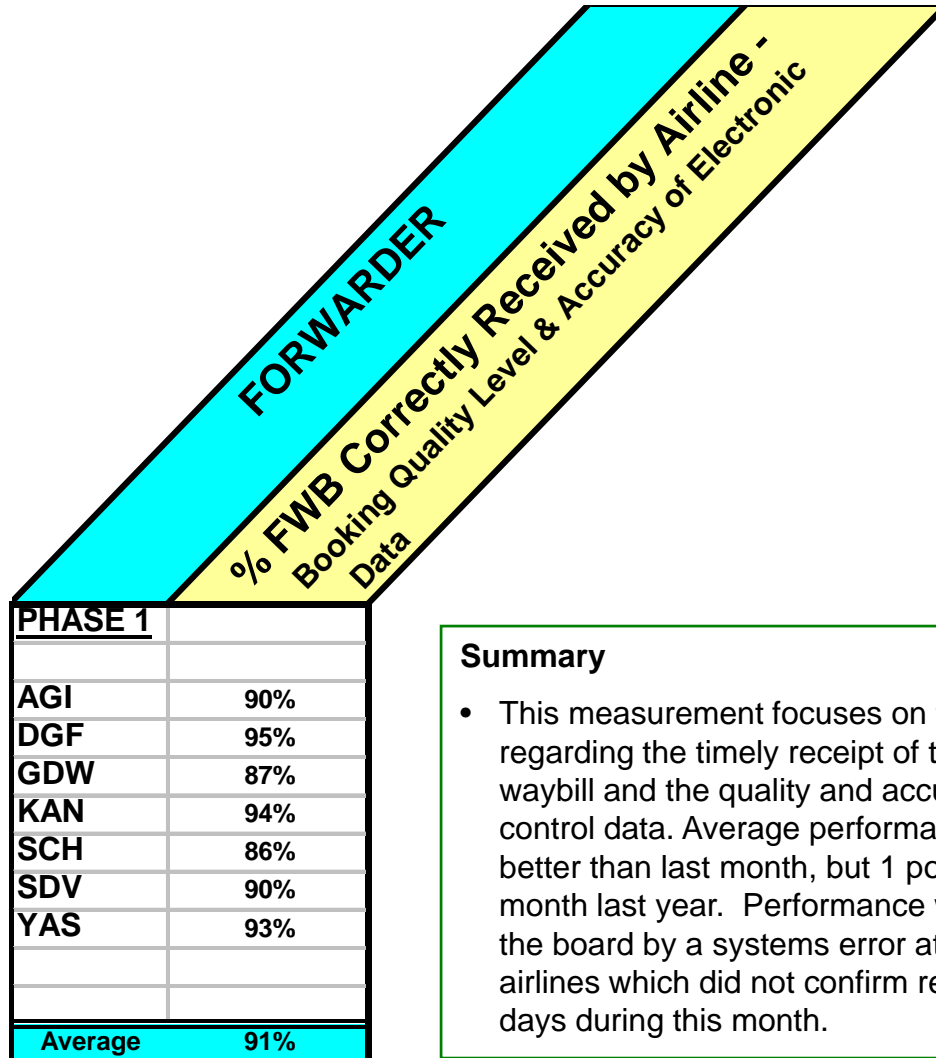
January saw a significant decrease in reported volumes over December as the global slowdown rolled out across the industry. Volumes were further impacted by the reorganization at Alitalia which meant they were unable to submit data this month. Like for Like measures saw an overall 9% decline in measured volumes. Quality improved across the board against last month, with all measures except FWB also showing improvement on last year.

MEDIA ENQUIRIES All media enquires about this Management Report or Cargo 2000 in general should be directed to: **Jamie Roche** T: +44 1753 621 666 E: jamie@jamierochepr.co.uk



Summary

- The monthly average 'Flown as Planned' was 1% up from last month. The 90% score was 2 percentage points better than January 2008.



Summary

- This measurement focuses on the 'joint' performance regarding the timely receipt of the Electronic Master Air waybill and the quality and accuracy of agreed process control data. Average performance 3 percentage points better than last month, but 1 point worse than this month last year. Performance was impacted across the board by a systems error at one of the major airlines which did not confirm receipt of FWB's for 21 days during this month.



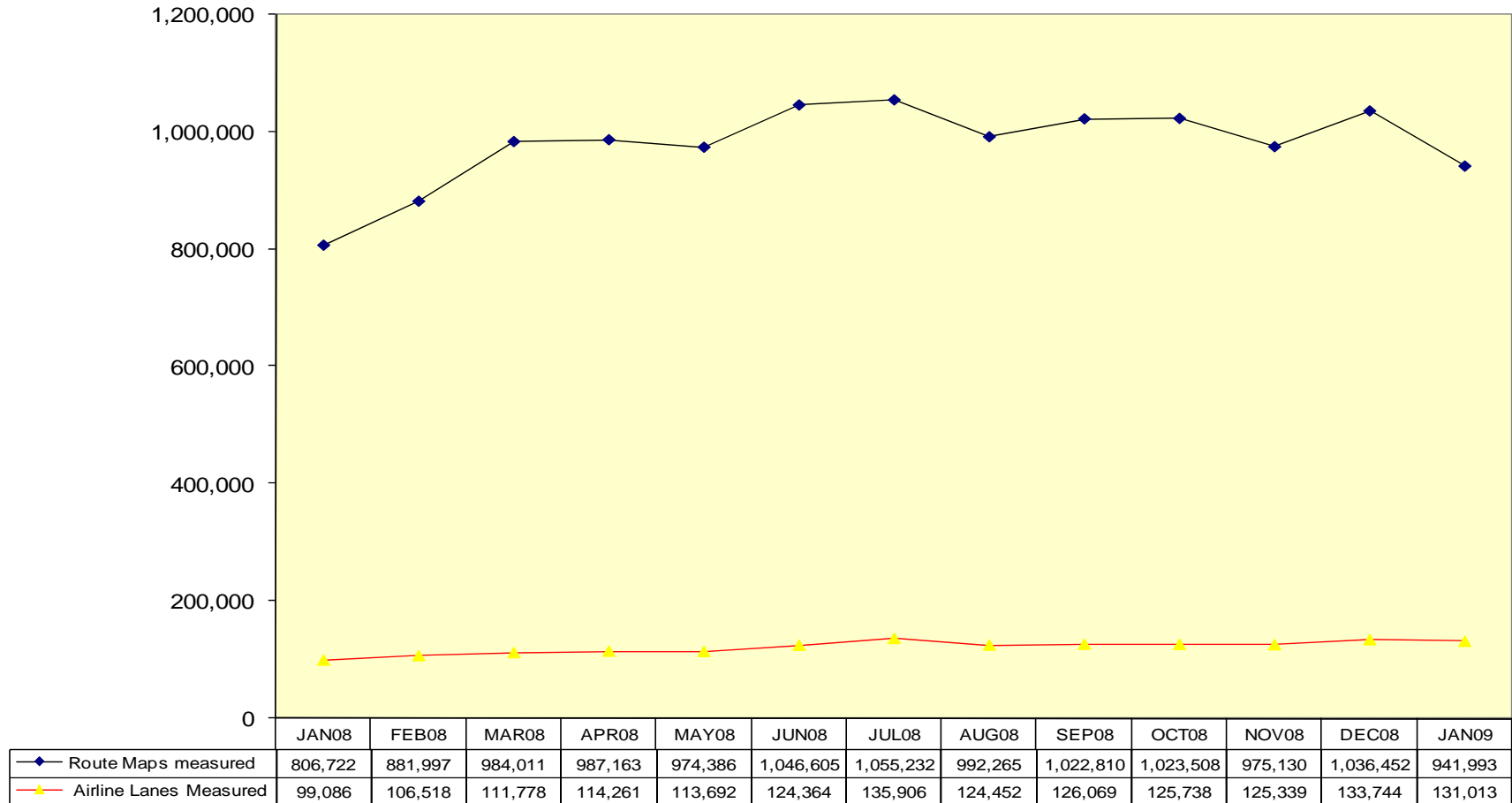
AIRLINE	
% On time "Notification of freight & Document availability" - Joint Airline/Forwarder performance	
AA	83%
AC	84%
AF	79%
AZ	0%
BA	84%
CV	81%
CX	93%
DL	62%
KE	84%
KL	81%
KZ	94%
LH	90%
LX	82%
OS	86%
SK	81%
SQ	95%
UA	82%
Average	86%

Summary

- This measurement focuses on the on time electronic transmission of the "Notification of Freight and Documents Availability" sent by Airlines to Forwarders. Two percentage points better than last month, and 4% points better than January 2008.
- Note: We are currently looking at some potential technical issues with this measure, and these individual figures should be considered indicative rather than absolute at this time.



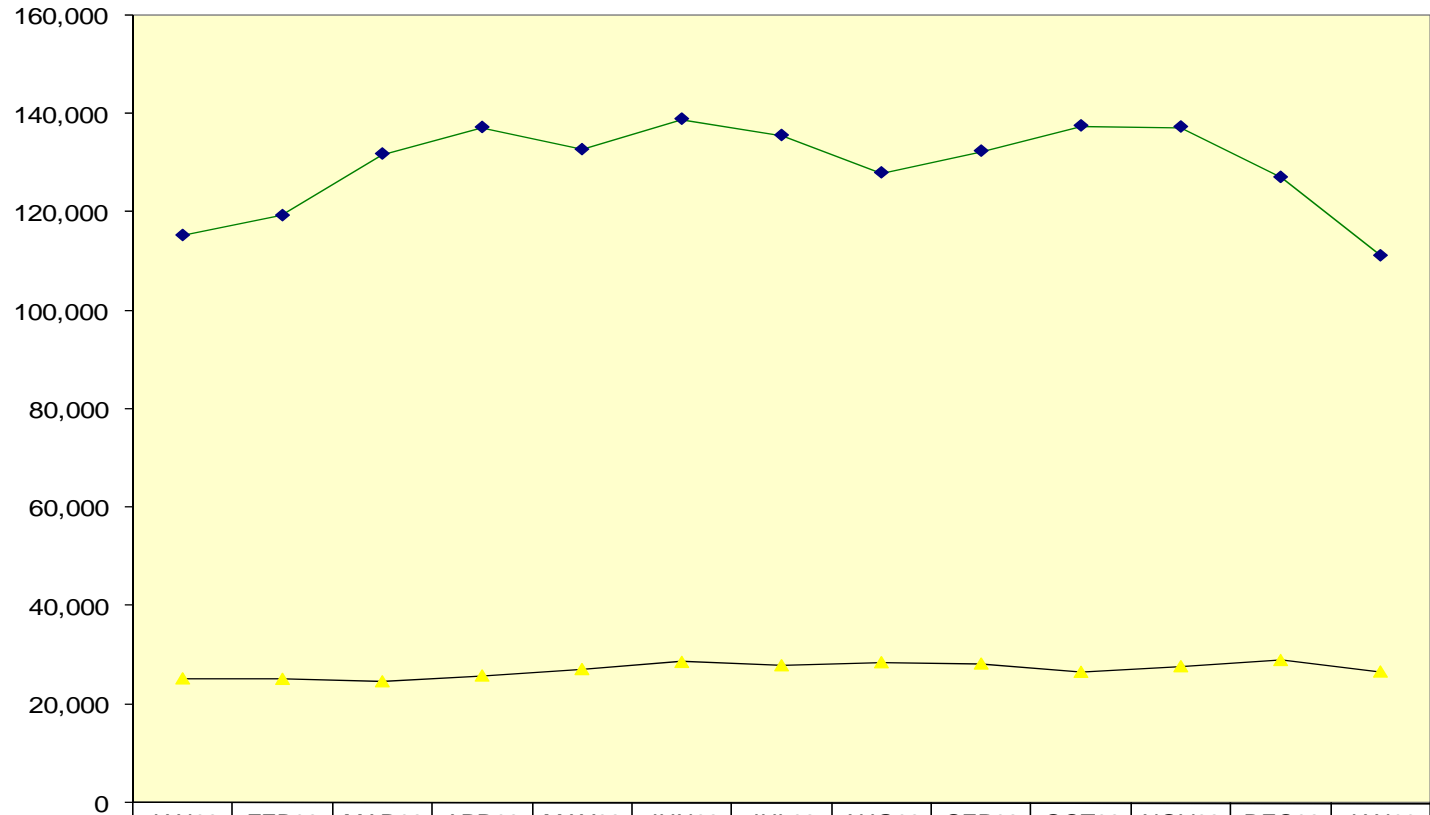
System-wide Monitoring Scope



Overall shipments show a 9% month on month decrease but a 17% increase over January 2008



Phase 1 - Monitoring Scope

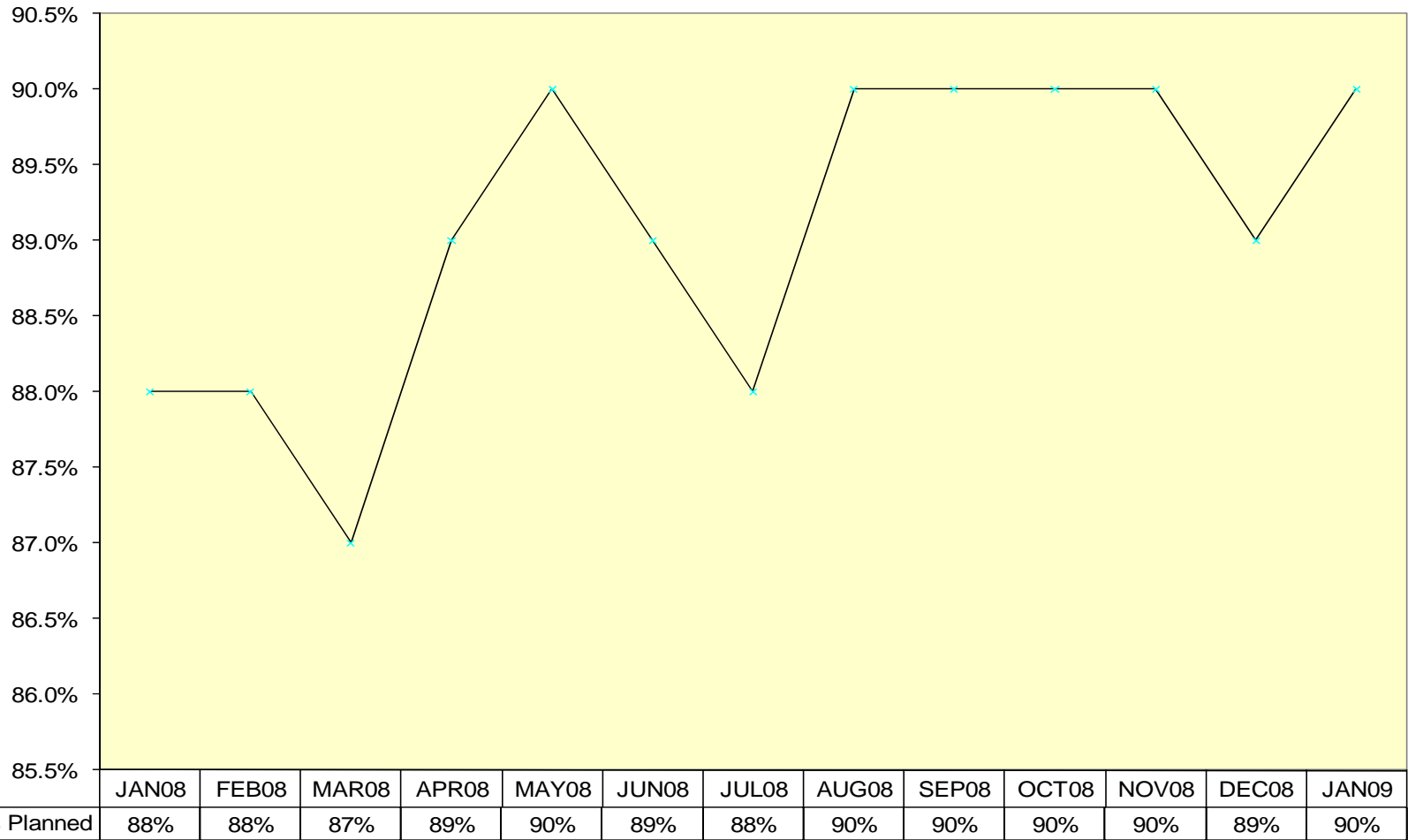


Phase 1-Airline Shipments Measured	115,307	119,342	131,877	137,270	132,757	138,938	135,623	128,040	132,462	137,572	137,353	127,123	111,175
Phase 1-Airline Lanes Measured	25,358	25,255	24,742	25,956	27,292	28,778	28,084	28,704	28,425	26,706	27,891	29,163	26,770

Phase 1 Shipments measured showed a 13% decrease over last month



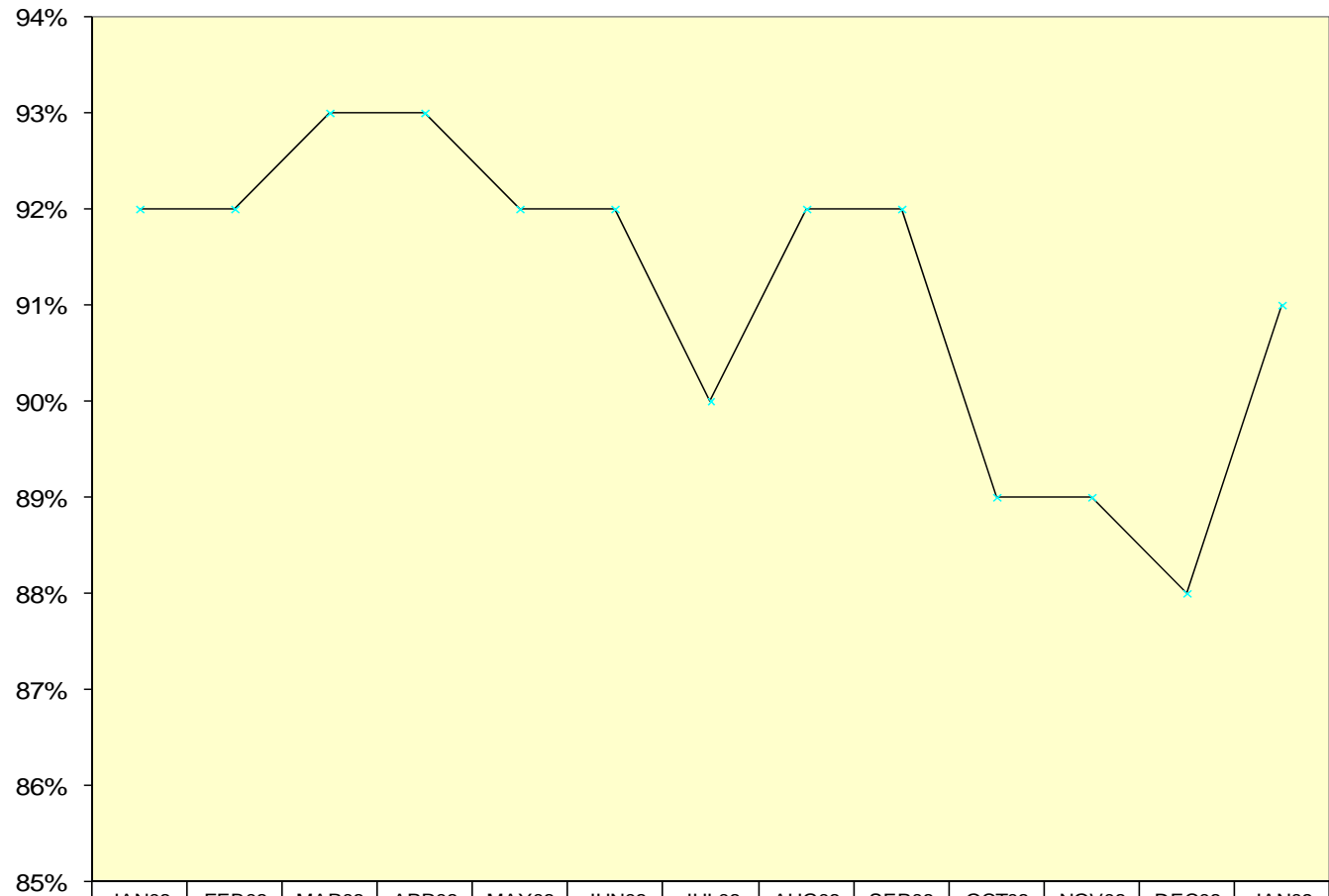
Phase 1- Airline "Flown As Planned"



Flown as Planned gained 1 % point this month, returning to a 12 month high.



Forwarder FWB % Correct Received by Airline"

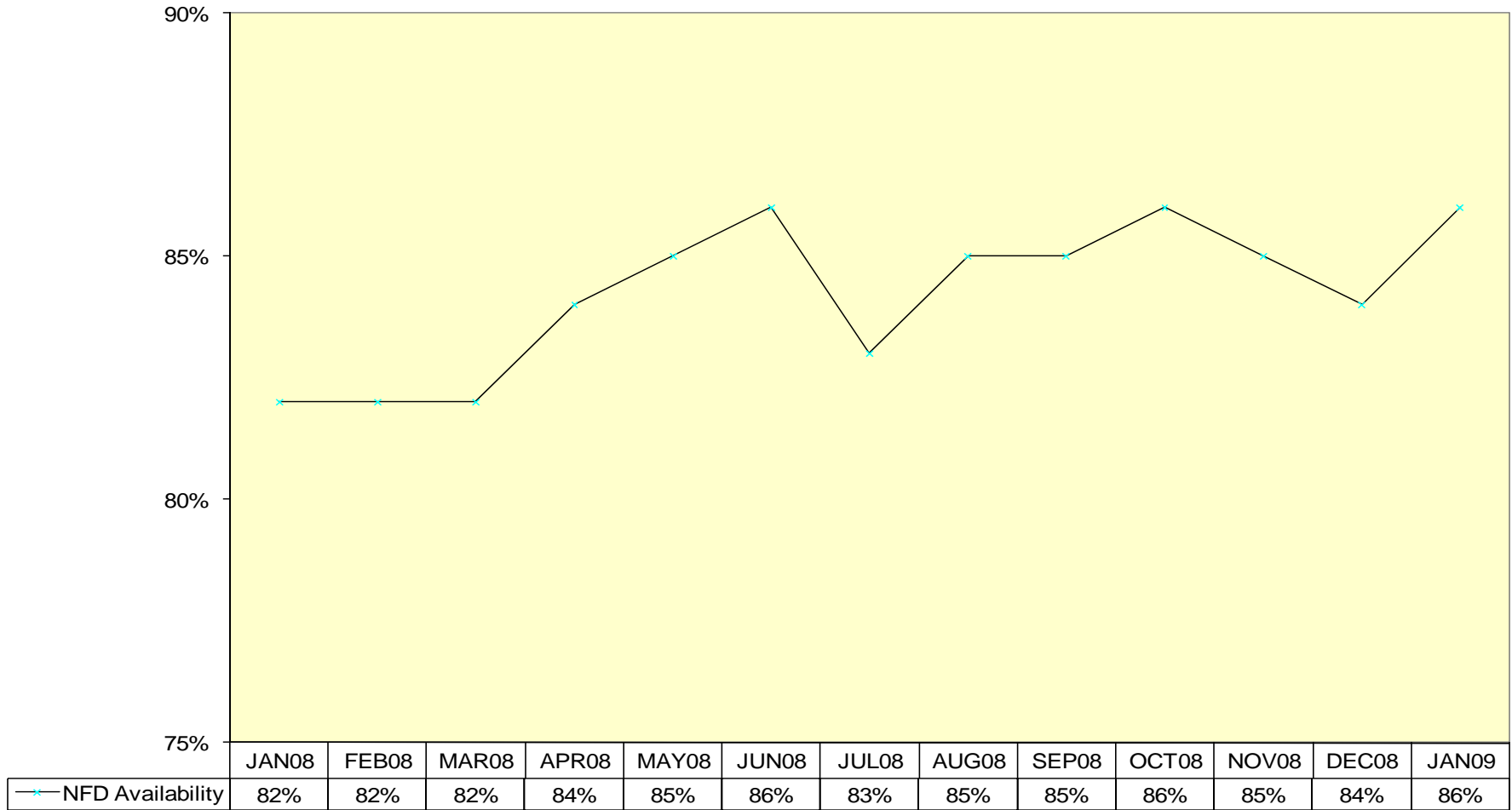


	JAN08	FEB08	MAR08	APR08	MAY08	JUN08	JUL08	AUG08	SEP08	OCT08	NOV08	DEC08	JAN09
— * — Forwarder FWB% Correct Received by Airlines	92%	92%	93%	93%	92%	92%	90%	92%	92%	89%	89%	88%	91%

A 3% point improvement over last month



Phase 1- Airline on time "Notification of Freight and Documents' availability"



A 2 point increase over last month, back to a 12 month high.