

C2K Monthly Report

C2K Monthly Report

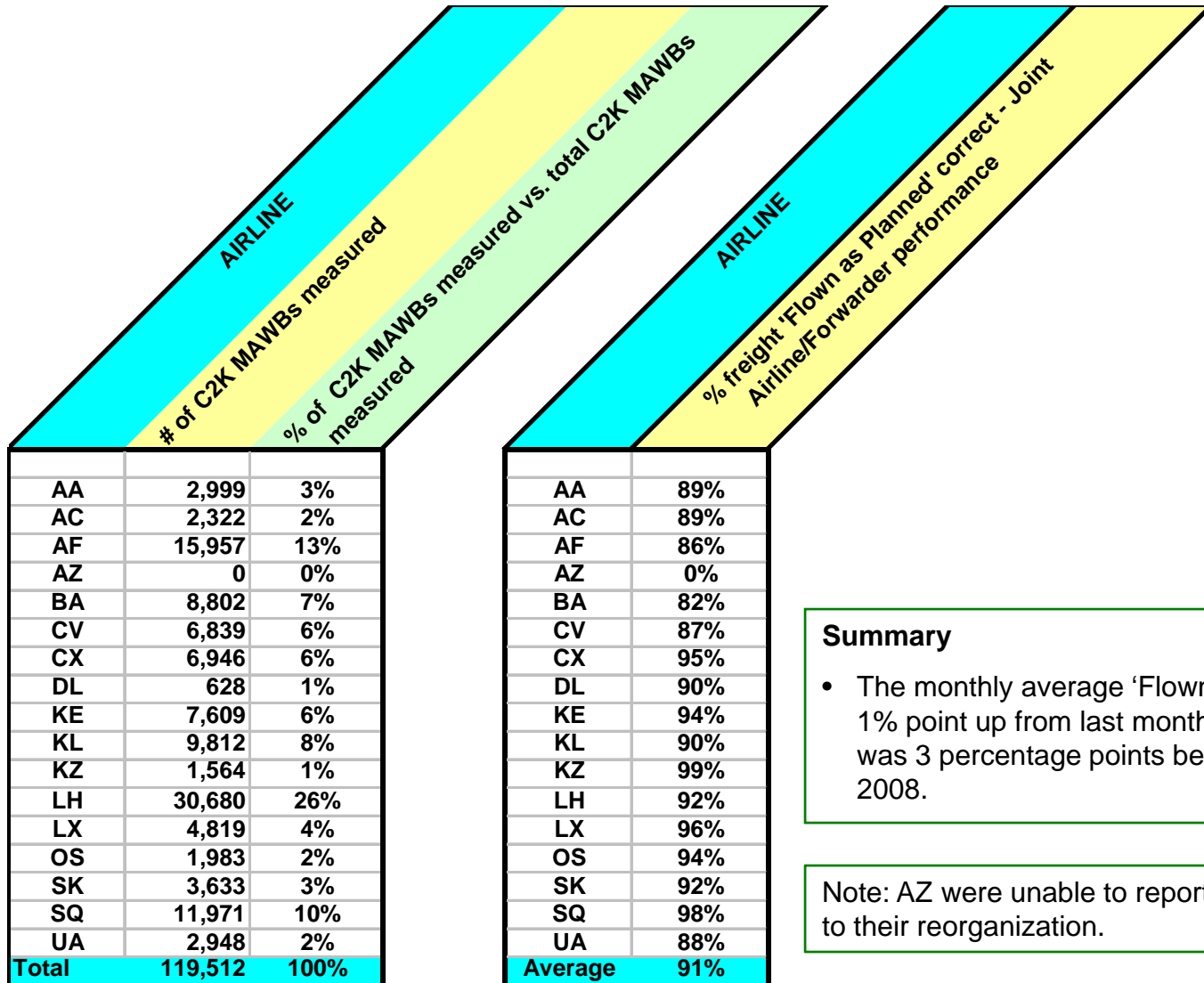
February 2009



SYSTEM WIDE	Actual Month	Difference to previous year
Number of Lane Segments measured	140,847	+ 34,329
Number of Route Maps created	1,031,791	+ 149,794
Phase 1	Actual Month	Difference to previous year
Number of shipments measured	119,512	+ 170
Number of Lane Segments measured	29,161	+ 3,906
Flown as Planned	91%	+ 3 %
FWB% Correct - Booking quality level & Accuracy of electronic data	89%	- 3 %
% On Time "Notification of Freight and Documents Availability	87%	+ 5 %

Despite the industry slowdown February saw a noticeable increase in reported volumes over January moving back above the one million shipments measured mark. The ongoing reorganization at Alitalia meant they were unable to submit data this month. Nevertheless total shipments measured increased 10% over last month and 17% over the same month last year. Quality was mixed with FWB losing 2 points on last month whilst Flown as Planned and NFD both gained a point.

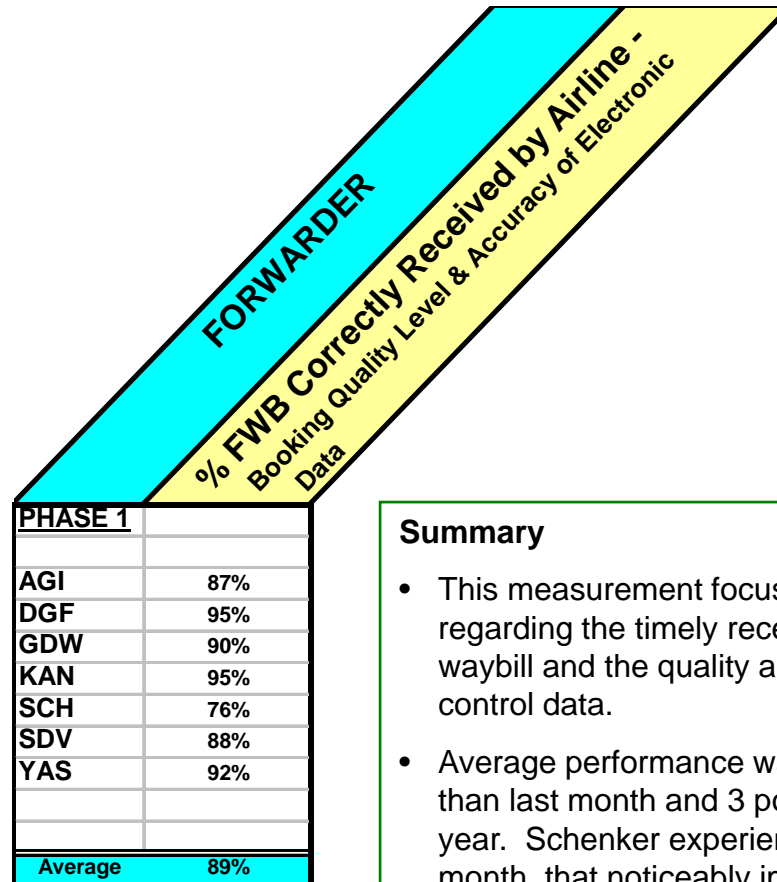
MEDIA ENQUIRIES All media enquires about this Management Report or Cargo 2000 in general should be directed to: **Jamie Roche** T: +44 1753 621 666 E: jamie@jamierochepr.co.uk



Summary

- The monthly average 'Flown as Planned' was 1% point up from last month. The 91% score was 3 percentage points better than February 2008.

Note: AZ were unable to report data this month due to their reorganization.



Summary

- This measurement focuses on the 'joint' performance regarding the timely receipt of the Electronic Master Air waybill and the quality and accuracy of agreed process control data.
- Average performance was 2 percentage points worse than last month and 3 points worse than this month last year. Schenker experienced a systems problem this month that noticeably impacted their FWB performance and contributed in part to the overall average decline.



AIRLINE	
% On time "Notification of freight & Document availability" - Joint Airline/Forwarder performance	
AA	83%
AC	83%
AF	81%
AZ	0%
BA	81%
CV	79%
CX	93%
DL	62%
KE	90%
KL	84%
KZ	94%
LH	91%
LX	80%
OS	86%
SK	81%
SQ	96%
UA	84%
Average	87%

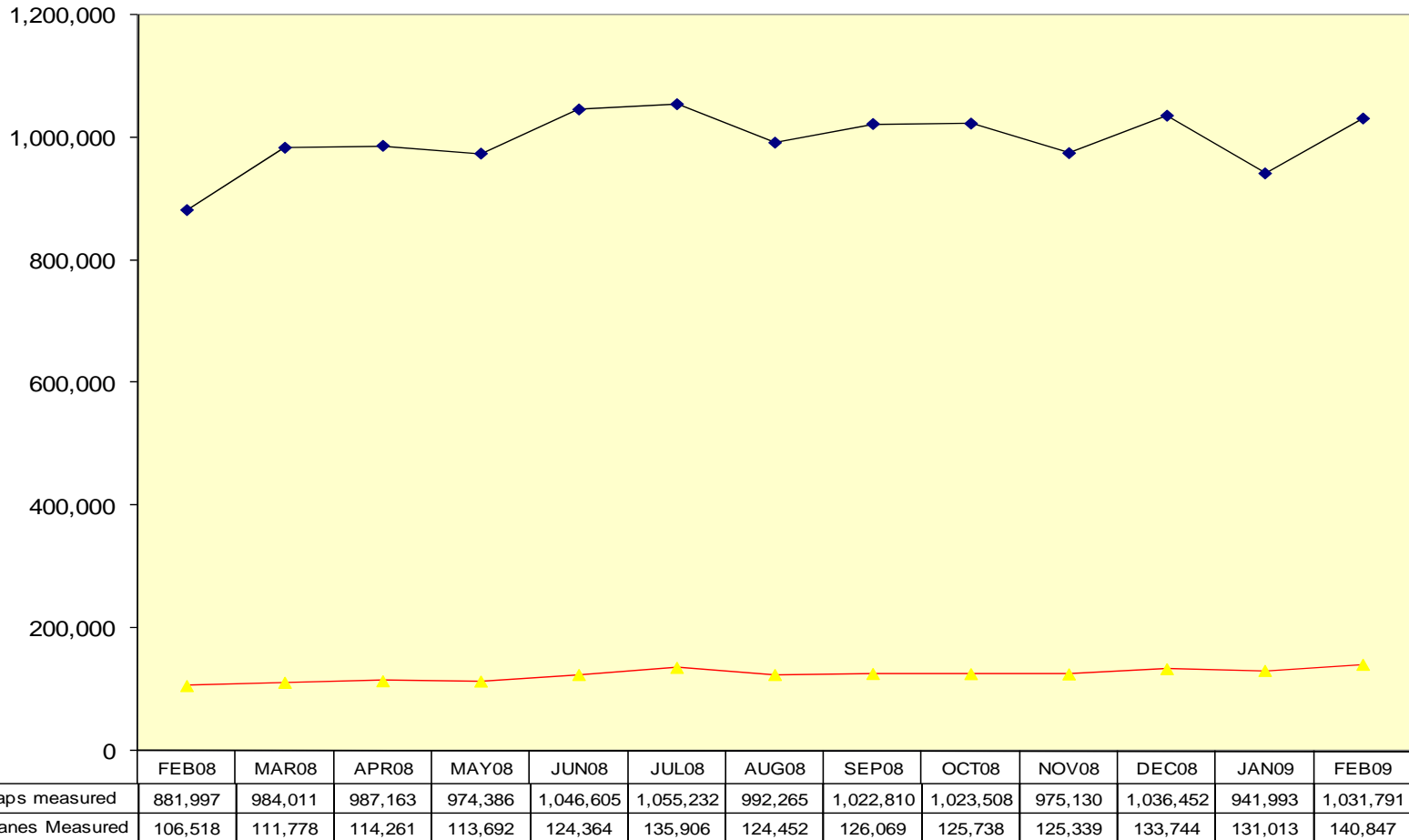
Summary

- This measurement focuses on the on time electronic transmission of the "Notification of Freight and Documents Availability" sent by Airlines to Forwarders. One percentage point better than last month, and 5% points better than February 2008.
- Note: We continue to address some technical issues with this measure, and these individual figures should be considered indicative rather than absolute at this time.

Note: AZ were unable to report data this month due to their reorganization.



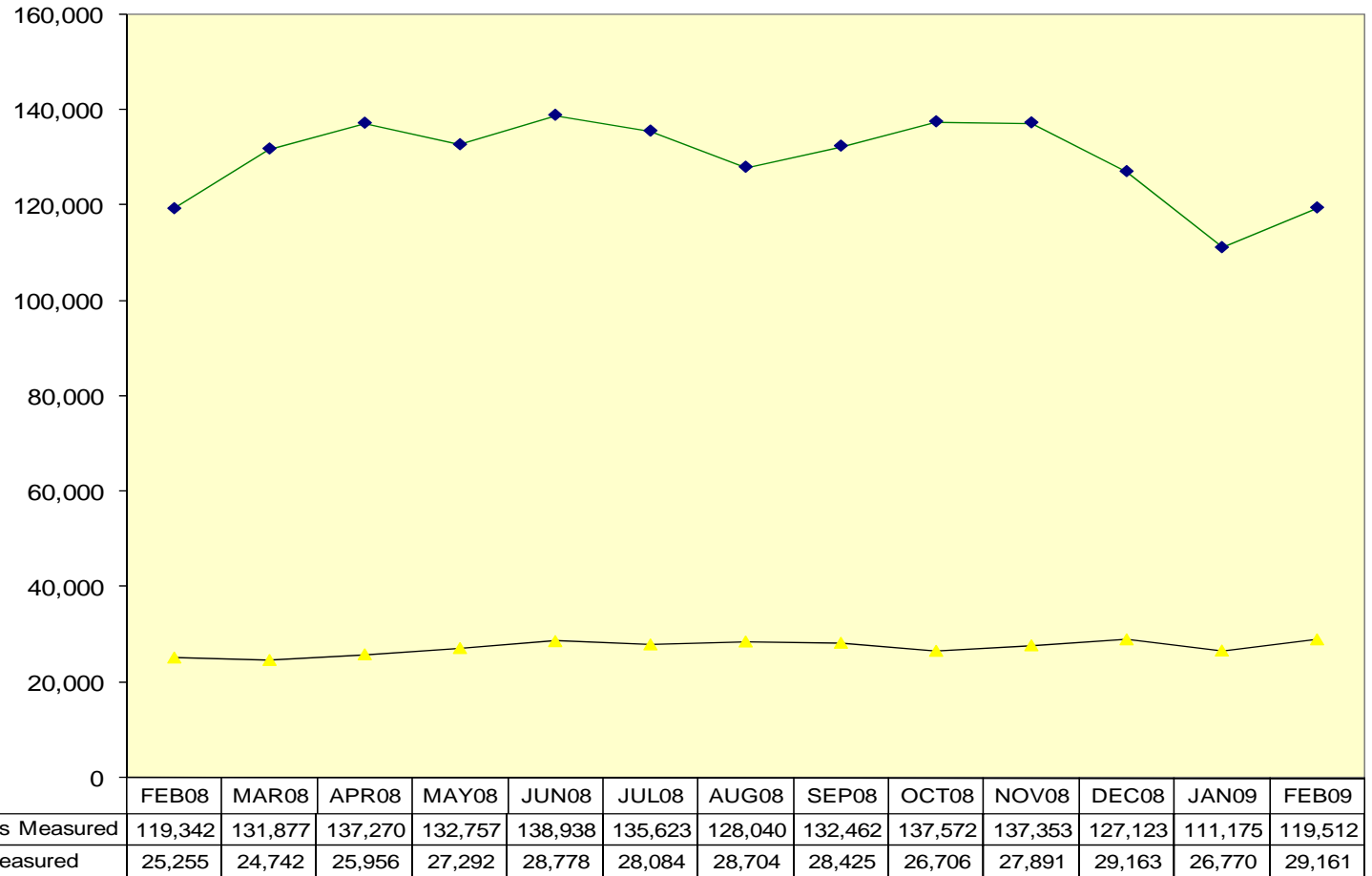
System-wide Monitoring Scope



Overall shipments show a 10% month on month increase and a 17% increase over February 2008



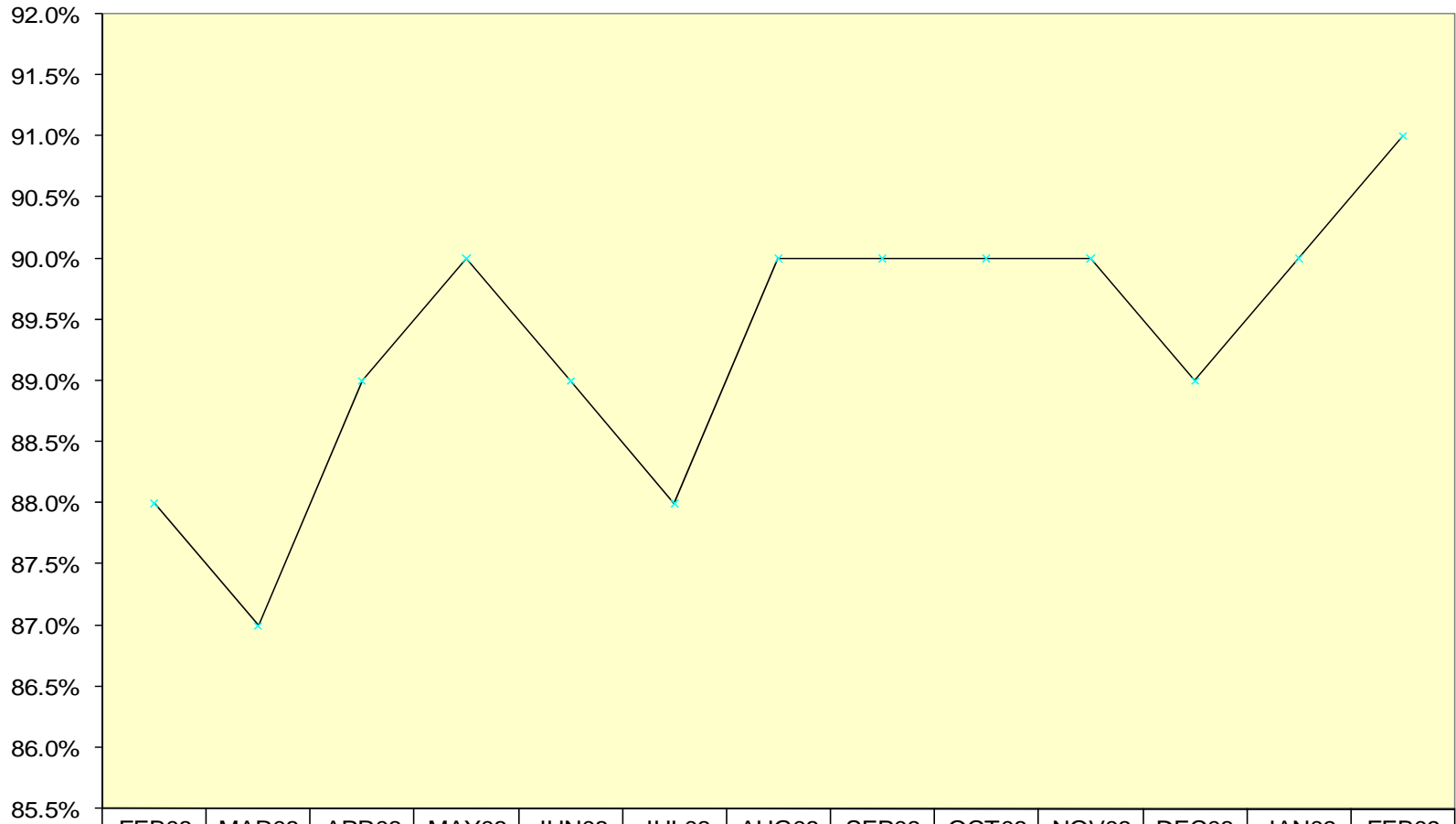
Phase 1 - Monitoring Scope



Phase 1 Shipments measured showed a 7% increase over last month



Phase 1- Airline "Flown As Planned"



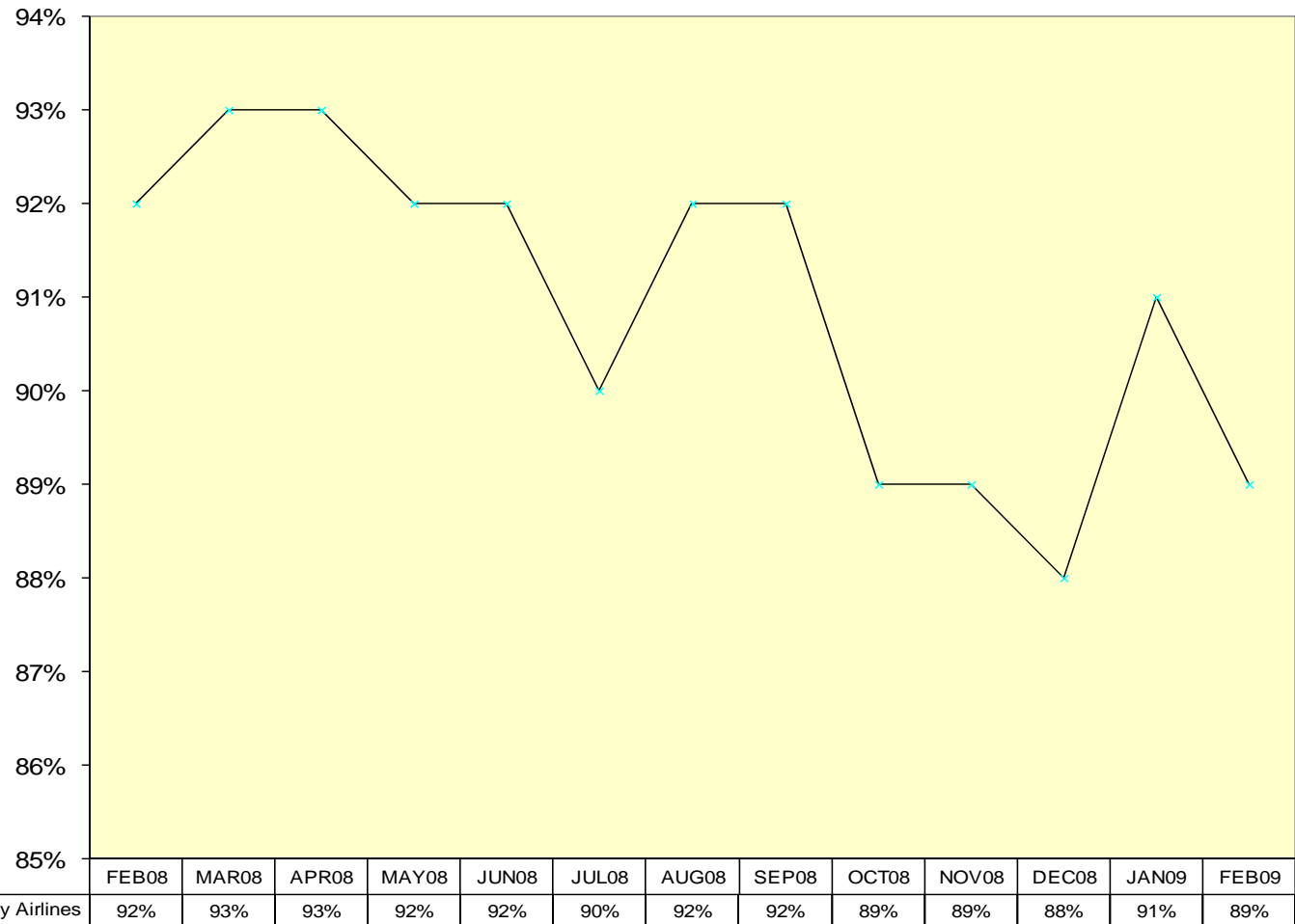
—x— Flown as Planned

FEB08	MAR08	APR08	MAY08	JUN08	JUL08	AUG08	SEP08	OCT08	NOV08	DEC08	JAN09	FEB09
88%	87%	89%	90%	89%	88%	90%	90%	90%	90%	89%	90%	91%

Flown as Planned gained a further % point this month, reaching a new 12 month high.



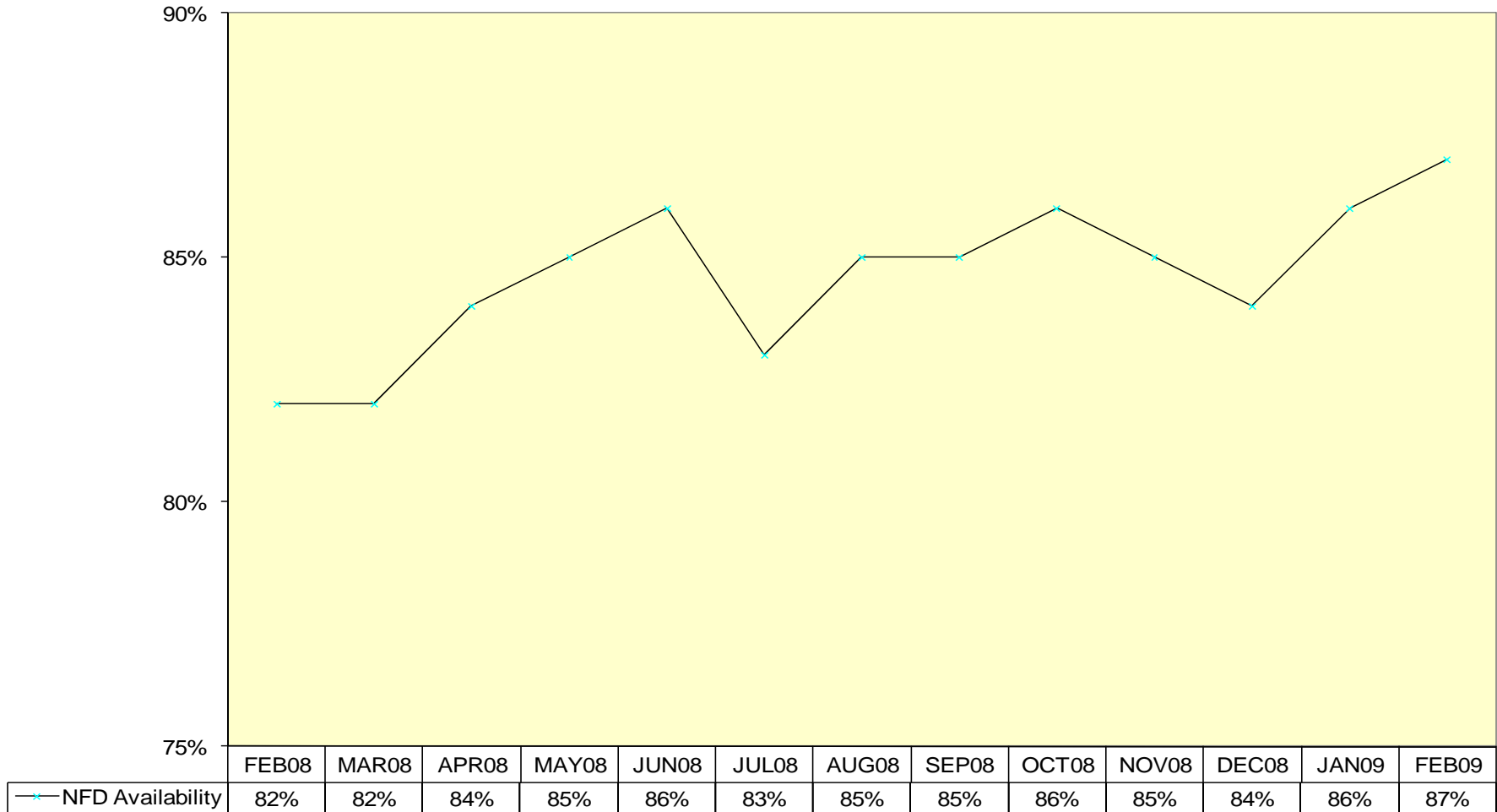
Forwarder FWB % Correct Received by Airline"



A 2% point fall from last month



Phase 1- Airline on time "Notification of Freight and Documents' availability"



A further 1 point month on month increase to a new 12 month high.