

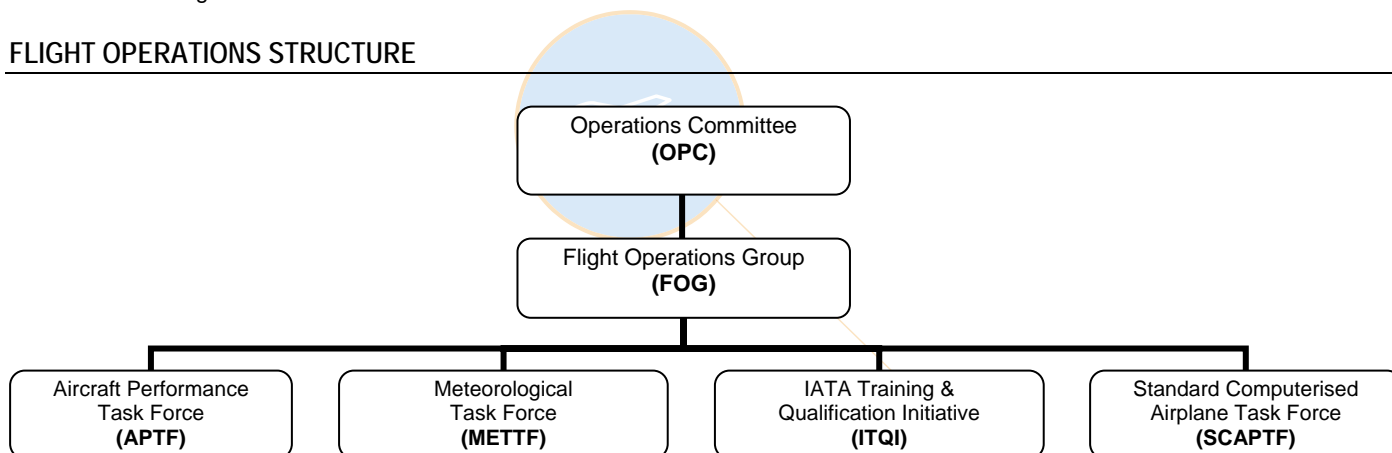


## FLIGHT OPERATIONS

### AREAS OF ACTIVITY

- Flight Operations Issues, Consultancy and Auditing
- Aircraft Performance
- Global Meteorological Information

### FLIGHT OPERATIONS STRUCTURE



### GROUPS AND TASK FORCES

#### FLIGHT OPERATIONS GROUP (FOG)

Contact: Mr. Juergen Haacker  
 Director, Operations  
 Tel: +1 (514) 874 0202 Ext. 3408, Fax: +1 (514) 874 2661  
 Email: [haackerj@iata.org](mailto:haackerj@iata.org)  
[www.iata.org/workgroups/fog](http://www.iata.org/workgroups/fog)

The FOG reports to the Operations Committee and meets twice a year. Membership consists of senior flight operations and air traffic management executives from 10 major international airlines. The group develops policies, standards and recommendations on all aspects of flight operations (flight crew training, scheduling, CNS, ATM, meteorology, performance), new technology and human factors and it addresses operational matters of strategic importance.

#### METEOROLOGICAL TASK FORCE (METTF)

Contact: Mr Ndiwa Wachina  
 Assistant Manager, Operations and Infrastructure  
 Tel: +1 514 874 0202 ext 3244, Fax: +1 (514) 874 2661  
 E-mail: [ndiwaf@iata.org](mailto:ndiwaf@iata.org)  
[www.iata.org/workgroups/mettf](http://www.iata.org/workgroups/mettf)

This task force consists of flight operations and meteorological experts from major international airlines. METTF is currently monitoring implementation of the ICAO World Area Forecast System, developing measures to limit the impact of volcanic activity on flight operations, and exploring new technology issues such as meteorological datalink applications.

### **IATA TRAINING AND QUALIFICATIONS (ITQI)**

Contact: Mr. Juergen Haacker  
Director, Operations  
Tel: +1 (514) 874 0202 Ext. 3408, Fax: +1 (514) 874 2661  
Email: haackerj@iata.org  
[www.iata.org/whatwedo/aircraft\\_operations/itqi](http://www.iata.org/whatwedo/aircraft_operations/itqi)

The IATA Training & Qualifications Initiative (ITQI) consists of training experts of member airlines and Strategic Partners. It handles issues on flight crew training regarding syllabi, procedures, tools (simulators) used. It also includes the IATA Global MPL Task Force.

### **AIRCRAFT PERFORMANCE TASK FORCE (APTF)**

Contact: Mr. John Synnott  
Aeronautical Info Services Analyst  
Tel: +1 (514) 874 0202 Ext. 3400, Fax: +1 (514) 874 2661  
E-mail: synnottj@iata.org  
[www.iata.org/workgroups/aircraft-performance-task-force](http://www.iata.org/workgroups/aircraft-performance-task-force)

This task force meets annually and deals with all aspects of aircraft performance. APTF's work includes proposed government regulations, information provided by or required from the manufacturers, runway and airport issues including digitised performance and obstacle data.

### **STANDARD COMPUTERISED AIRPLANE PERFORMANCE TASK FORCE (SCAPTF)**

Contact: Mr. John Synnott  
Aeronautical Info Services Analyst  
Tel: +1 (514) 874 0202 Ext. 3400, Fax: +1 (514) 874 2661  
E-mail: synnottj@iata.org  
[www.iata.org/workgroups/scaptf](http://www.iata.org/workgroups/scaptf)

This task force works to standardise and optimise the interface between the aircraft manufacturers' performance software and the airlines' computerised performance programmes. The result is published as performance data specifications.

## **ADDITIONAL BENEFITS**

---

### **FLIGHT OPERATIONS COURSES**

Strategic Partnerships members may attend, at a reduced fee, IATA training courses including:

- Digital Avionics Systems (3-5 days)
- Flight Operations Management