

# C2K Monthly Report

## C2K Monthly Report

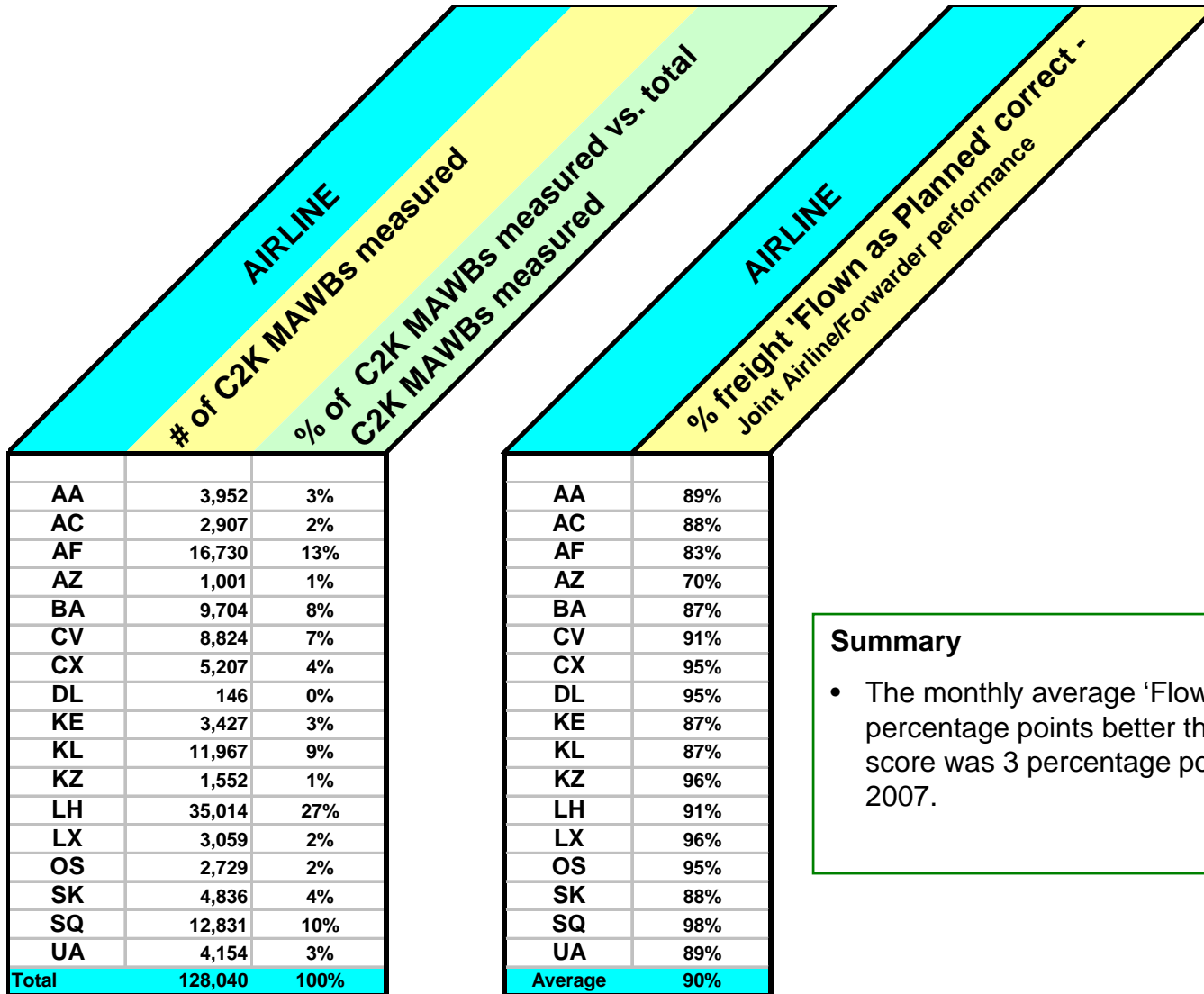
August 2008



SYSTEM WIDE	Actual Month	Difference to previous year
. Number of Lane Segments measured	124,452	+ 51,843
. Number of Route Maps created	992,265	+ 417,115
Phase 1	Actual Month	Difference to previous year
. Number of shipments measured	128,040	+ 4,701
. Number of Lane Segments measured	26,706	+ 2,824
. Flown as Planned	90%	+ 3 %
. FWB% Correct - Booking quality level & Accuracy of electronic data	92%	+ 1 %
. % On Time "Notification of Freight and Documents Availability	85%	+ 8 %

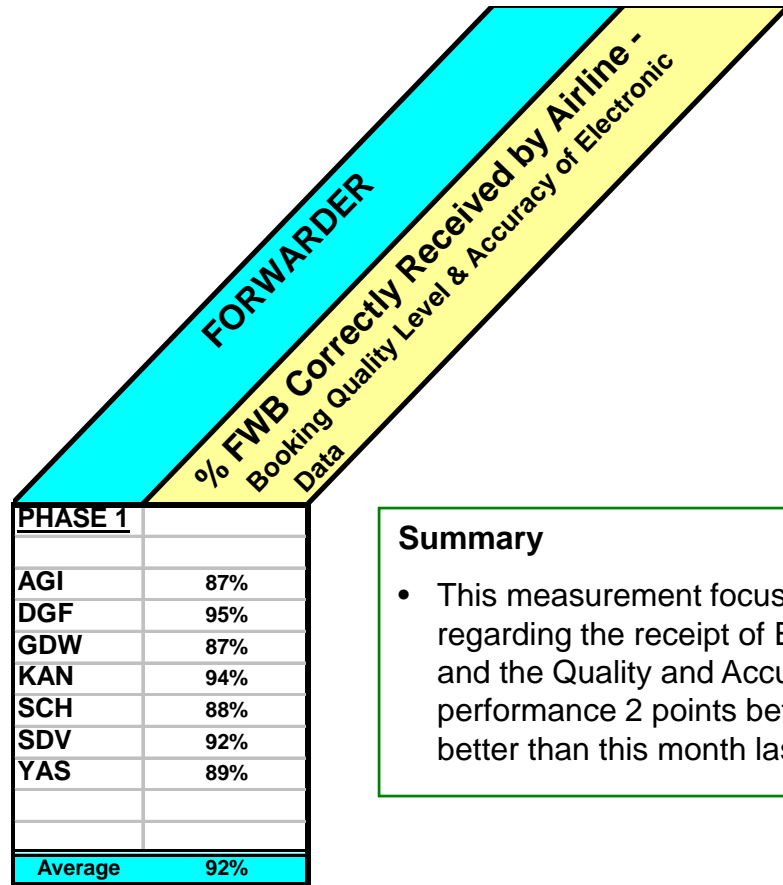
August brought the traditional summer fall off in volumes, 6% down on July and dropping back to below the 1 Million route maps measured. Quality measures improved, with Flown as Planned, FWB correct and NFD on time all up 2 points on last months performance.

**MEDIA ENQUIRIES** All media enquires about this Management Report or Cargo 2000 in general should be directed to:  
Jamie Roche T: +44 1753 621 666 E: [jamie@jamierochepr.co.uk](mailto:jamie@jamierochepr.co.uk)



### Summary

- The monthly average 'Flown as Planned' was 2 percentage points better than last month. The 90% score was 3 percentage points better than August 2007.



### Summary

- This measurement focuses on the 'joint' performance regarding the receipt of Electronic Master Air waybill and the Quality and Accuracy of these data. Average performance 2 points better than last month and 1 point better than this month last year.



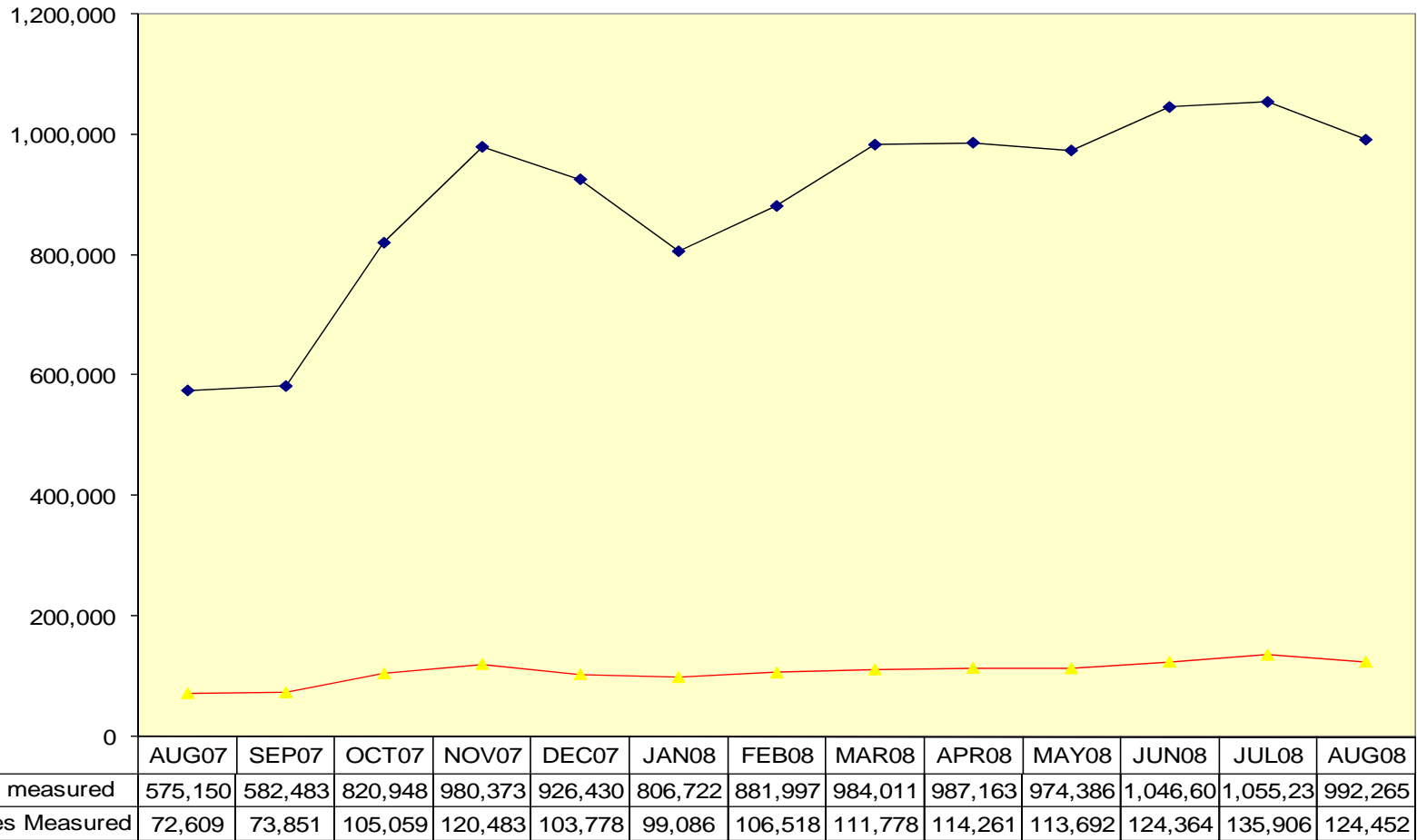
<b>AIRLINE</b>	
% On time "Notification of freight & Document availability" - Joint Airline/Forwarder performance	
AA	80%
AC	85%
AF	76%
AZ	29%
BA	85%
CV	87%
CX	90%
DL	84%
KE	93%
KL	76%
KZ	78%
LH	90%
LX	71%
OS	89%
SK	82%
SQ	94%
UA	82%
<b>Average</b>	<b>85%</b>

### Summary

- This measurement focuses on the on time electronic transmission of the "Notification of Freight and Documents Availability" sent by Airlines to Forwarders. A 2% increase over last month, and 8% points better than August 2007.
- Note: We are currently looking at some potential technical issues with this measure, and these figures should be considered indicative rather than absolute at this time.



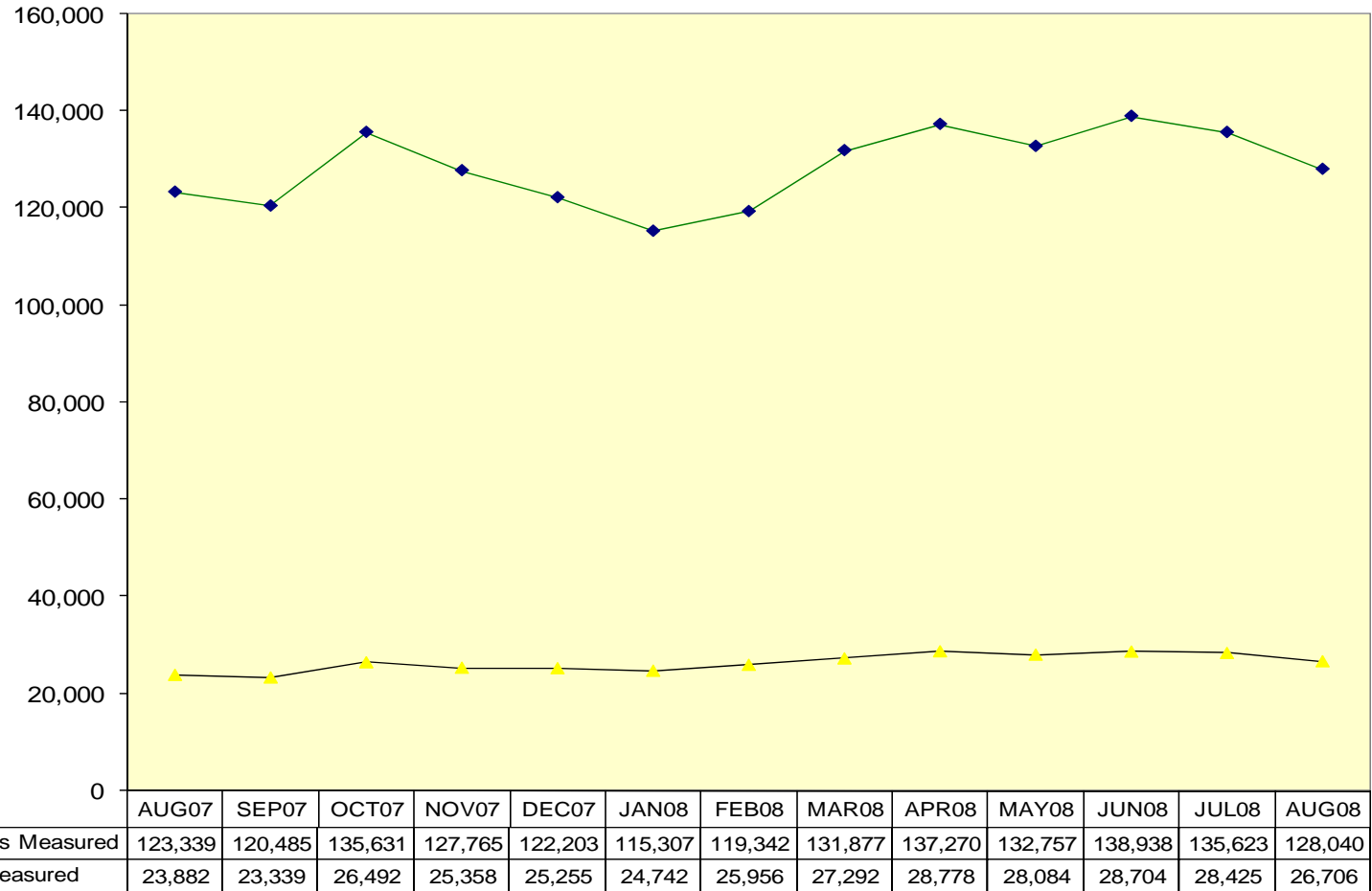
## System-wide Monitoring Scope



**Traditional summer slowdown brings a 6% overall decrease in shipments over last month.**



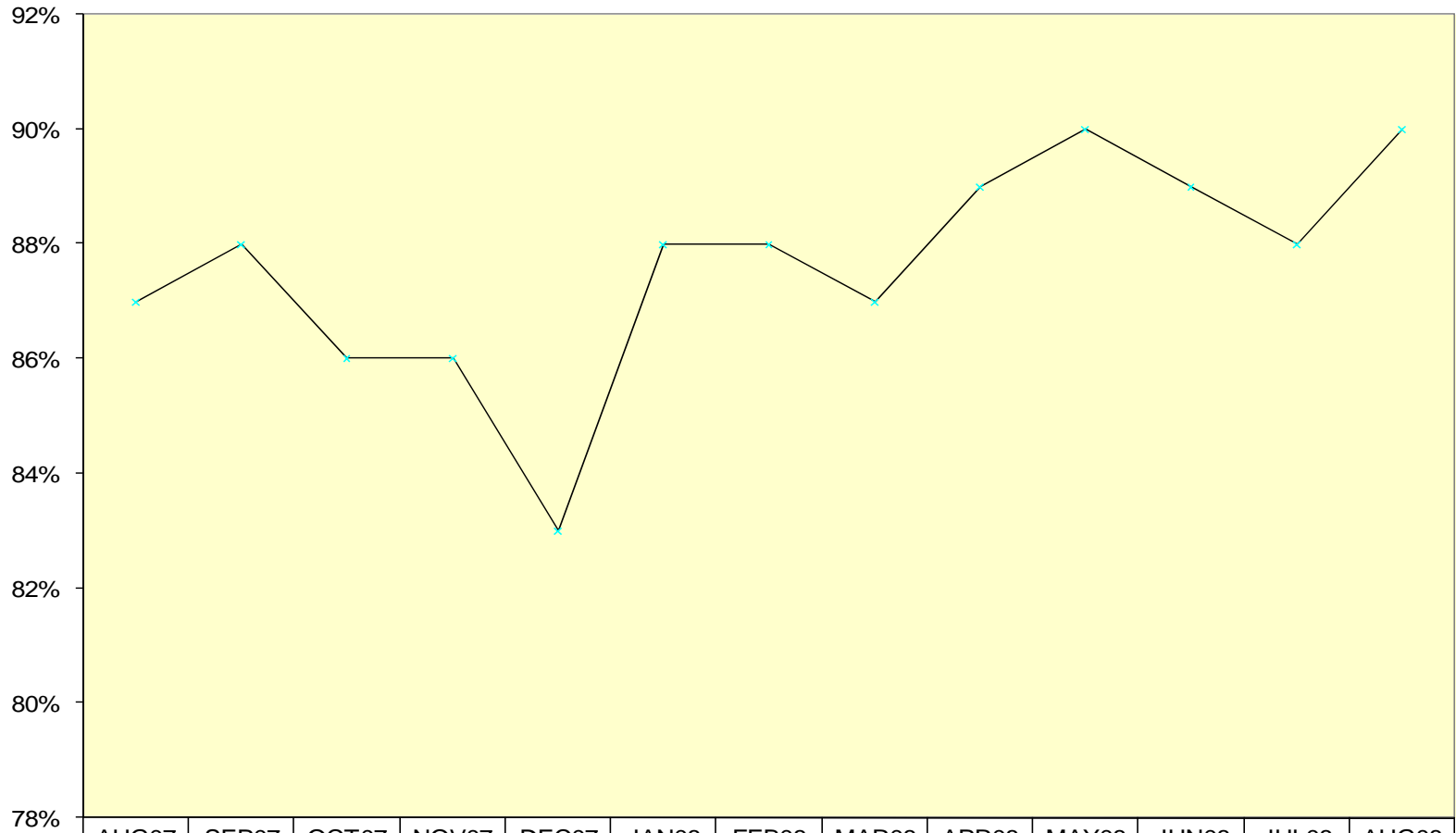
## Phase 1 - Monitoring Scope



**Phase 1 Shipments measured showed a 6% decrease over last month**



## Phase 1- Airline "Flown As Planned"



—x— Flown as Planned

AUG07	SEP07	OCT07	NOV07	DEC07	JAN08	FEB08	MAR08	APR08	MAY08	JUN08	JUL08	AUG08
87%	88%	86%	86%	83%	88%	88%	87%	89%	90%	89%	88%	90%

**Flown as Planned gained 2 percentage point this month, back to a 12 month high.**



### Forwarder FWB % Correct Received by Airline"

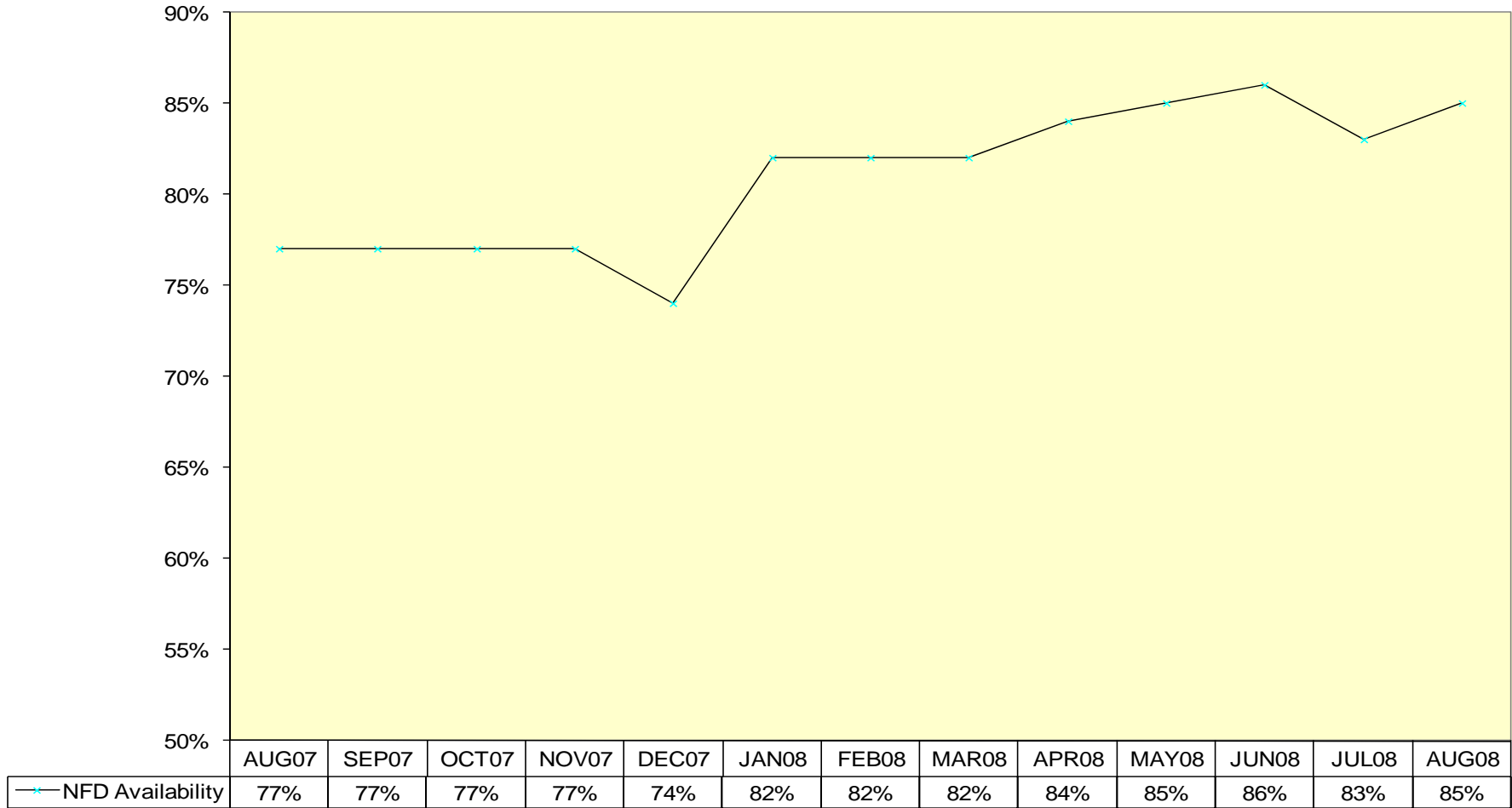


	AUG07	SEP07	OCT07	NOV07	DEC07	JAN08	FEB08	MAR08	APR08	MAY08	JUN08	JUL08	AUG08
Forwarder FWB% Correct Received by Airlines	91%	90%	91%	90%	89%	92%	92%	93%	93%	92%	92%	90%	92%

**A 2% point increase on last month. Ongoing system problems impacting messaging were resolved mid month and should bring further improvement in the September results.**



## Phase 1- Airline on time "Notification of Freight and Documents' availability"



**A 2 % point increase on last months performance, bringing us back to a 12 month high.**