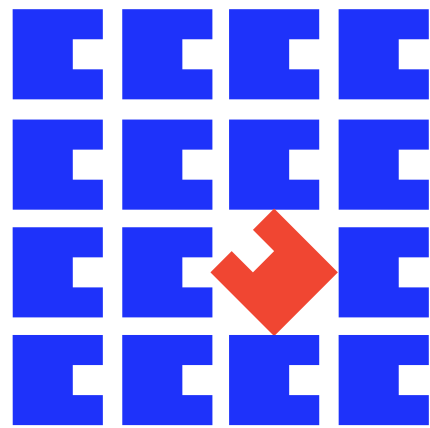


Minimum Connect Time

User Guide



Minimum Connecting Time User Guide

IATA SSIM Chapter 8-Minimum Connecting Time (MCT) Standards

Document Amendments

Section	Type of Change	Amendment	Effective
	Creation		November 2018
II & III		Email addresses & website links revised	February 2020

Table of Contents

I.	Introduction.....	4
	Purpose.....	4
	Responsibility.....	4
	Standard Schedule Information Manual.....	4
II.	MCT Exceptions Request.....	5
	Process Flow Chart - Illustration of a MCT Exception Request Process.....	5
	Process Flow Chart - Illustration of a MCT Exception Request Data Aggregators Process.....	6
	Process Organization - Illustration of the MCT Data Flow.....	7
III.	MCT Carrier Submission Template.....	8
IV.	Record Type 2 mapping.....	9
V.	Examples.....	10

I. Introduction

Purpose

The purpose of this document is to provide users a guideline for processing MCT filings according to the **IATA Standard Schedule Information Manual (SSIM) Chapter 8 – Presentation, Application and Transfer of Minimum Connecting Time (MCT) data**.

The user guide is intended to help current users understand the new MCT standards introduced in 2018. It is recommended for best business practice to purchase a copy of the current **SSIM Manual**. IATA strongly encourages all carriers to follow the published SSIM manual.

This guide illustrates and describes, step by step, the process of the MCT request before and after submission. It also contains the information of MCT Carrier Submission Template.

A large portion of the user guide is dedicated to show different MCT filing scenarios. The guide provides examples of general MCTs filings and very specific MCTs filings for Current, Mapping and New MCTs. For the new MCT filings, the example scenarios describe how itineraries will build with the new MCT standards.

Responsibility

The responsibility for maintaining the User Guide is mandated to the Minimum Connect Time Group (MCTG). Any changes to the user guide document will require agreement via the change control process established by the MCTG. This ensures the guide cannot be changed or new items introduced without the agreement of the MCTG.

Standard Schedule Information Manual

SSIM Chapter 8 – Minimum Connecting Time describes the rules for submission and application of the MCT for processing. To facilitate industry-wide implementation, a range of optional features, such as the use of suppressions, codeshare indicators and other optional MCT data elements, etc. are included in the new chapter.

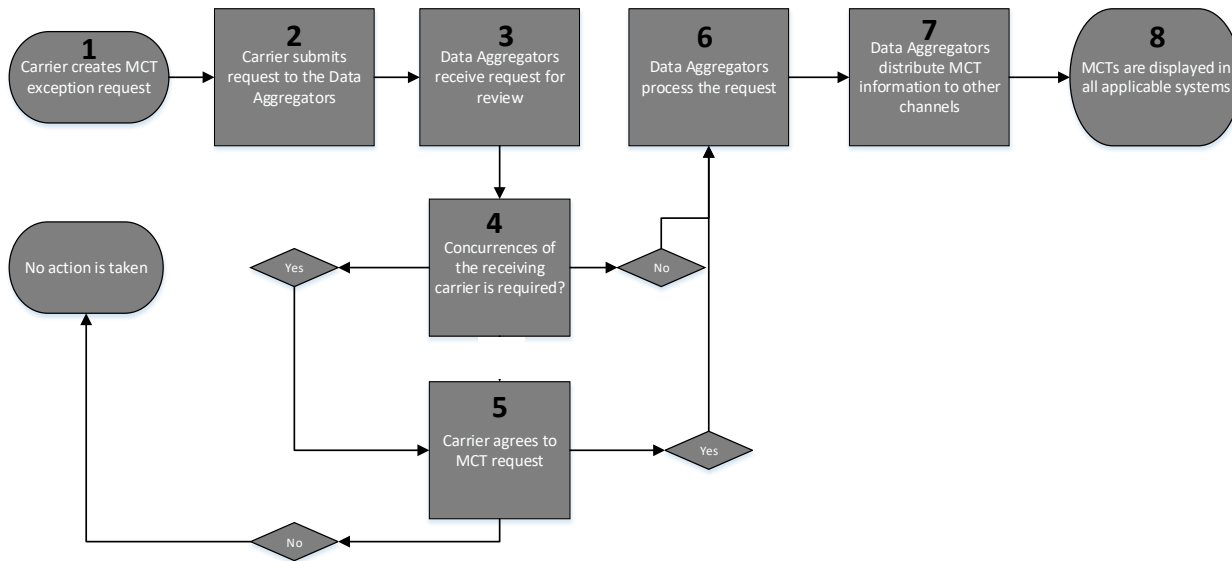
The administration of MCTs is governed by IATA PSC Resolution 765 and as required, MCTs must be observed by all ticketing and reservations outlets and are used by automated reservations systems. It is therefore of the utmost importance to ensure MCTs are correctly established, updated and uniformly quoted and used at all times. In a *passenger* context, MCT is defined as the shortest time interval required in order to transfer a passenger and his luggage from one flight to a connecting flight, in a specific location or metropolitan area.

In a *cargo* context, the MCT can be defined as the shortest time interval required in order to transfer cargo shipment from one flight to a connecting flight. **SSIM Chapter 8 – Minimum Connect Time section 8.1 General**

The MCT Data Elements were added to the 2018 SSIM Chapter 8 and were not in the previous versions of the SSIM Manual. For the complete lists, please refer to the **SSIM Chapter 8 – Minimum Connect Time section 8.7 MCT Data Elements Glossary**.

II. MCT Exceptions Request

Process Flow Chart - Illustration of a MCT Exception Request Process



1. Carrier creates MCT exception request

It is recommended that carriers submit their MCT data in the new MCT Template located on the IATA website: <http://www.iata.org/psc-plan>.

2. Carrier submits request to the Data Aggregators

Contact information: MCT@Cirium.com

Contact information: MCT@oag.com

3. Data Aggregators receive request for review

4. A concurrence of the receiving carrier is required?

Yes – Proceed to Step 5

No- Proceed to Step 6

5. Carrier agrees to MCT request?

Yes – Proceed to Step 6

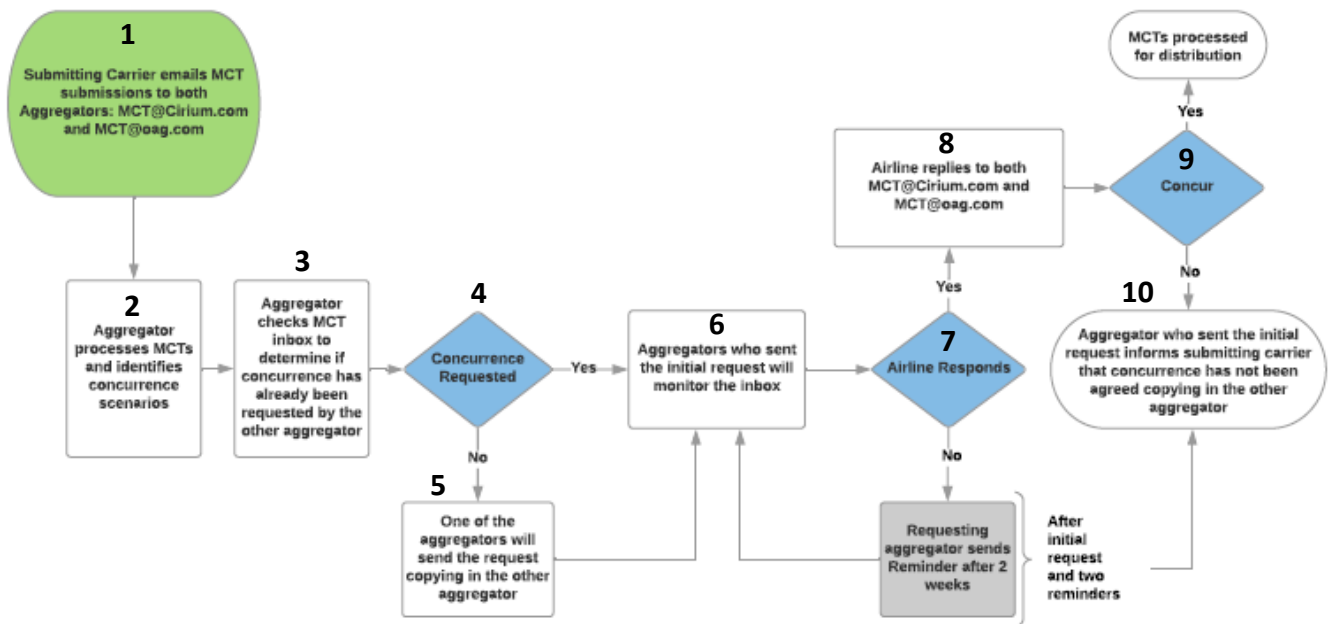
No – “No action is taken”

6. Data Aggregators process the request

7. Data aggregators distribute MCT information to other channels

8. MCTs are displayed in all applicable systems

Process Flow Chart - Illustration of a MCT Exception Request Data Aggregators Process



1. Submitting Carriers Emails MCT submissions to both aggregators

Contact information: MCT@cirium.com

Contact information: MCT@oag.com

2. Aggregators processes MCTs and identifies concurrences scenarios

3. Aggregator checks MCT inbox to determine if concurrence has already been requested by the other aggregators

4. Concurrence requested

Yes – Proceed to Step 6

No- Proceed to Step 5

5. One of the aggregators will send the request copying in the other aggregators

6. Aggregators who sent the initial request will monitor the inbox

7. Airline responds

Yes – Proceed to Step 8

No- Proceed to Step 10

8. Airline replies to both MCT@cirium.com and MCT@oag.com

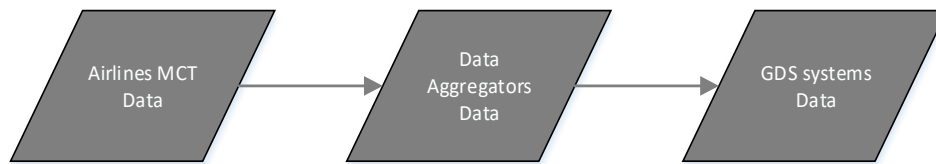
9. Concur

Yes – MCT is process for distribution

No - Proceed to Step 10

10. Aggregators who sent the initial request informs submitting carrier that concurrences has not been agreed copying in the other aggregators (Requesting aggregators sends reminder after 2 weeks)

Process Organization - Illustration of the MCT Data Flow



Any discrepancies of the MCT data should be reported to the Airlines for review.

III. MCT Carrier Submission Template

It is recommended that carriers submit their MCT data in the following order. The Template is available at <http://www.iata.org/psc-plan>.

The data elements order of template is not the same as the priority order listed on the hierarchy table.

The images below of the template have been enlarged for viewing purpose.

Section 1:

ACTION INDICATOR	STATION		CONNECTION	TIME	ARR CARRIER			ARR FLIGHT #	
<u>(A/D)</u>	<u>ARR</u>	<u>DEPT</u>	<u>STATUS</u>	<u>HHMM</u>	<u>Carrier</u>	<u>Codeshare Indicator</u>	<u>Codeshare Operating</u>	<u>Range Start</u>	<u>Range End</u>

Section 2:

DEPARTURE CARRIER			DEPART FLIGHT #		TERMINAL		STATION		STATE	
<u>Carrier</u>	<u>Codeshare Indicator</u>	<u>Codeshare Operating</u>	<u>Range Start</u>	<u>Range End</u>	<u>Arrive</u>	<u>Depart</u>	<u>Prev</u>	<u>Next</u>	<u>Prev</u>	<u>Next</u>

Section 3:

COUNTRY		REGION		AIRCRAFT TYPE		AIRCRAFT BODY (W/N)	
<u>Prev</u>	<u>Next</u>	<u>Prev</u>	<u>Next</u>	<u>Arrive</u>	<u>Depart</u>	<u>Arrive</u>	<u>Depart</u>

Section 4:

SUPPRESSIONS				DATE	
<u>Suppression Indicator (Y/N)</u>	<u>Region</u>	<u>Country</u>	<u>State</u>	<u>Effective From</u>	<u>Effective To</u>

IV. Record Type 2 mapping

This table defines the mapping from the Old MCT Data Elements to the New MCT Data Elements.
Colour-filled cells represent where there is no direct mapping between old and new

Old Format Fields	New Format Fields
	Record Type
Arrival Airport	Arrival Station
Time (MMM)	Time (HHMM)
Status (DD,DI,ID,II)	Status (DD,DI,ID,II)
Departure Airport	Departure Station
Arrival Carrier	Arrival Carrier
	Arrival Codeshare Indicator
	Arrival Codeshare Operating Carrier
Departure Carrier	Departure Carrier
	Departure Codeshare Indicator
	Departure Codeshare Operating Carrier
Arrival Aircraft Type/Body	Arrival Aircraft Type
Arrival Aircraft Type/Body	Arrival Aircraft Body
Departure Aircraft Type/Body	Departure Aircraft Type
Departure Aircraft Type/Body	Departure Aircraft Body
Arrival Terminal	Arrival Terminal
Departure Terminal	Departure Terminal
Previous Country	Previous Country
Previous City	
Previous Airport	Previous Station
Next Country	Next Country
Next City	
Next Airport	Next Station
Arrival Flight Number Range Start	Arrival Flight Number Range Start
Arrival Flight Number Range End	Arrival Flight Number Range End
Departure Flight Number Range Start	Departure Flight Number Range Start
Departure Flight Number Range End	Departure Flight Number Range End
Previous State	Previous State
Next State	Next State
Previous Region	Previous Region
Next Region	Next Region
Effective From Date(Local)	Effective From Date(Local)
Effective To Date(Local)	Effective To Date(Local)
	Suppression Indicator
	Suppression Region
	Suppression Country
	Suppression State
	Submitting Carrier Identifier
	Filing Date(UTC)
	Action Indicator
	Record Serial Number

V. Examples

A. How do I file MCT exceptions?

This section is intended to help the user file MCTs exceptions according to the SSIM chapter 8. Please refer to Section VIII. Examples B. Example Template on use and read the examples.

a. How can I use suppression on a global scale?

- Suppression Global Carrier – Suppress connections with another carrier but choose to allow connection in specific stations. *Example 1*
- Suppression -Country – Suppress all connections within a certain country. *Example 2*
- Suppression –Global Codeshare – Suppress all codeshare to all codeshare but allow codeshare connections for a specific carrier to carrier. *Example 3*

b. How do I use Aircraft body?

- Aircraft – MCT Override – Arrival “W” wide bodied equipment requires a longer MCT. *Example 4*

c. How do I use effective from and effective to dates?

- Effective to/from- Certain period of time, carrier requires a longer MCT at a specific station *Example 5*

d. How do I use the codeshare indicator field?

- Codeshare Indicator *Example 6*

e. How do I use the Operating Carrier MCT

- Using MCT of the Operating Carrier *Example 7*

f. Change - (Delete and Add)

- Applying MCT Changes *Example 8*

g. How do I use (Next/Previous) station, state, country or region?

- How do I use (Next/Previous) Country – *Example 9*
- How do I use (Next/Previous) Region Codes – *Example 10*
- How do I use (Next/Previous) Station Codes – *Example 11*

h. How do I use the codeshare indicator field?

- Default to Operation Carrier – *Example 12 and 13*

i. How do I file using Codeshare Flights?

- Codeshare Flights – *Example 14*

j. How do file a MCT transition from flight numbers ranges to codeshare operating carrier - *Example 15 and 16*

k. How do I use aircraft type?

- MCT Exceptions by Equipment – *Example 17*

l. How do I use effective from and effective to dates?

- *Dates - Date Range – Example 18*

m. How do I use (Next/Previous) station, state, country or region?

- Country Level – All Carriers - *Example 19*

- Regions levels –Between Countries *Example 20*
- Regions levels –. Restricting circuitous routings *Example 21*

n. How do I file MCT Global Suppression for Codeshare except at a Specific Station?

Example 22

o. How do I file a time exception? *Example 23*

p. How do I file MCT suppression? Basic - Carrier to Carrier

- Emphasis on Y Indicator vs. 999 Time *Example 24*

q. How do I change an MCT I have already filed with the data aggregator? *Example 8*

r. How do I file MCT suppression? Basic - Carrier to Carrier

- by Region *Example 25*
- by Country *Example 26*
- by State *Example 27*

s. How do I file MCT suppression for ALL Carriers? All including my carrier.

Example 28

t. How do I use (Next/Previous) station, state, country or region?

- Station – Country *Example 29 and 30*
- Country – Station *Example 31*

u. How do I file a flight specific (1 flight) MCT?

Example 32

v. How do I file a flight range and sub-set flight range?

Example 33

w. How can I use suppression on a global scale?

Example 34

x. How do I use (Next/Previous) station, state, country or region?

- Station – State *Example 35*
- Station Region *Example 36*

y. How do I file MCT Suppression for All carriers?

- Station Exception *Example 37 and 38*
- By Region *Example 39*
- By Country *Example 40*
- By State *Example 41*

z. How do I file a time exception?

Example 42

B. Example Template:

Below is information on how to use and read the examples.
 (This example should not be used as guidance for the new MCT format.)

MCTG Examples Template

unnecessary fields will be hidden

Current MCT: Airlines send MCT requests in multiple formats, below is an example on how an airline currently sends the request to file an MCT

MCT Mapping: Please refer to section IV. Record type 2 Mapping

New MCT using new fields: The data might look the same as the MCT Mapping if the carrier chooses not to convert their mapped data to the New MCT using new fields.

Scenario, MCT examples using new template (hide unnecessary fields), show how itineraries will build

STATION		CONNECTION	TIME	ARR CARRIER			ARR FLIGHT #		DEPARTURE CARRIER			DEPART FLIGHT #		TERMINAL	
ARR	DEPT	STATUS		Carrier	Codeshare Indicator	Codeshare Operating	Range Start	Range End	Carrier	Codeshare Indicator	Codeshare Operating	Range Start	Range End	Arrive	Depart
LHR	LHR	II	100	AA					BA					3	3

This section describes the segments available and show how itineraries will build.

Passenger wants to fly LHR-JFK-ATL.

The following flights are available:

1. AA1345 LHR-JFK 2200 1730
2. DL0810 JFK-ATL 1820 2120
3. VS2810 JFK-ATL 1820 2120 (DEI 50=DL0810)
4. DL0910 JFK-ATL 1855 2155
5. VS1700 JFK-ATL 1855 2155 (DEI 50=DL0910)

Itineraries will build as follows:

VS1345 connects to DL0810 with MCT 3

VS1345 connects to VS1700 with MCT 1

Minimum Connecting Time User Guide

Example 1: Suppression - Global Carrier

A. Current MCT:

AIRPORT			MCT	CARRIER		ARRIVE FLIGHT		DEPART FLIGHT		EQUIPMENT		STATION		COUNTRY	
Arr Apt	Dpt Apt	Con Typ	HH:MM	Arr Car	Dpt Car	Start Flt	End Flt	Start Flt	End Flt	Arrive	Depart	Prev	Next	Prev	Next
BCN	BCN	II	01:30	AA	VY										
FCO	FCO	ID	01:30	AA	VY										
AAL	AAL	ID	19:59	AA	VY	1	9099								
AAL	AAL	II	19:59	AA	VY	1	9099								
ACC	ACC	ID	19:59	AA	VY	1	9099								
ACC	ACC	II	19:59	AA	VY	1	9099								
ACE	ACE	ID	19:59	AA	VY	1	9099								
ACE	ACE	II	19:59	AA	VY	1	9099								
AGP	AGP	ID	19:59	AA	VY	1	9099								
AGP	AGP	II	19:59	AA	VY	1	9099								
ALC	ALC	ID	19:59	AA	VY	1	9099								
ALC	ALC	II	19:59	AA	VY	1	9099								

B. Mapping MCT:

MCT#	STATION		CONNECTION	TIME	ARR CARRIER			DEPARTURE CARRIER			SUPPRESSIONS				
	ARR	DEPT	STATUS		Carrier	Codeshare Indicator	Codeshare Operating	Carrier	Codeshare Indicator	Codeshare Operating	Carrier Suppression Indicator (A/X)	Suppression Indicator (Y/N)	Region	Country	State
1	BCN	BCN	II	01:30	AA			VY							
2	FCO	FCO	ID	01:30	AA			VY							
3	AAL	AAL	ID		AA			VY				Y			
4	AAL	AAL	II		AA			VY				Y			
5	ACC	ACC	ID		AA			VY				Y			
6	ACC	ACC	II		AA			VY				Y			
7	ACE	ACE	ID		AA			VY				Y			
8	ACE	ACE	II		AA			VY				Y			
9	AGP	AGP	ID		AA			VY				Y			
10	AGP	AGP	II		AA			VY				Y			
11	ALC	ALC	ID		AA			VY				Y			
12	ALC	ALC	II		AA			VY				Y			

C. New MCT using new fields:

MCT#	STATION		CONNECTION	TIME	ARR CARRIER			DEPARTURE CARRIER			SUPPRESSIONS			
	ARR	DEPT	STATUS	HHMM	Carrier	Codeshare Indicator	Codeshare Operating	Carrier	Codeshare Indicator	Codeshare Operating	Suppression Indicator (Y/N)	Region	Country	State
1			II		AA			VY			Y			
2			ID		AA			VY			Y			
3	BCN	BCN	ID	0200	AA			VY			N			
4	FCO	FCO	II	0200	AA			VY			N			

Carrier wants to suppress all connections with another carrier. Carriers choose to allow connections in specific stations (suppression override).

To suppress connections between AA and VY- Except in BCN/FCO

The following flights are available:

- | | | | | |
|----|--------|---------|------|------|
| 1. | AA0112 | MIA-BCN | 1805 | 0910 |
| 2. | VY2125 | BNC-AGP | 1205 | 1345 |
| 3. | AA0720 | CLT-FCO | 0630 | 0945 |
| 4. | VY6686 | FCO-VIE | 1425 | 1610 |
| 5. | AA220 | DFW-AMS | 1550 | 0815 |
| 6. | VY8301 | AMS-BCN | 1020 | 1235 |

The following itineraries will build:

Segments 1 and 2 with MCT 3
 Segments 3 and 4 with MCT 4

The following itineraries will *not* build:

Segments 5 and 6 because of MCT 1

Because carrier AA has filed a global suppression to VY, carrier AA has to file a MCT exception at the stations where carrier AA wants to allow connections with carrier VY.

Minimum Connecting Time User Guide

Example 2: Suppression - Country

A. Current MCT:

AIRPORT			MCT	CARRIER		ARRIVE FLIGHT		DEPART FLIGHT	
Arr Apt	Dpt Apt	Con Typ	HH:MM	Arr Car	Dpt Car	Start Flt	End Flt	Start Flt	End Flt
HAV	HAV	DI	19:59		AA			1	9099
HAV	HAV	II	19:59	AA		1	9099		
HAV	HAV	II	19:59		AA			1	9099
VRA	VRA	DI	19:59		AA			1	9099
VRA	VRA	II	19:59	AA		1	9099		
VRA	VRA	II	19:59		AA			1	9099
HOG	HOG	DI	19:59		AA			1	9099
HOG	HOG	II	19:59	AA		1	9099		
HOG	HOG	II	19:59		AA			1	9099
SNU	SNU	DI	19:59		AA			1	9099
SNU	SNU	II	19:59	AA		1	9099		
SNU	SNU	II	19:59		AA			1	9099

B. Mapping MCT:

STATION		CONNECTION	TIME	ARR CARRIER			ARR FLIGHT #		DEPARTURE CARRIER			DEPART FLIGHT #	
ARR	DEPT	STATUS		Carrier	Codeshare Indicator	Codeshare Operating	Range Start	Range End	Carrier	Codeshare Indicator	Codeshare Operating	Range Start	Range End
HAV	HAV	DI							AA			1	9099
HAV	HAV	II		AA			1	9099					
HAV	HAV	II							AA			1	9099
VRA	VRA	DI							AA			1	9099
VRA	VRA	II		AA			1	9099					
VRA	VRA	II							AA			1	9099
HOG	HOG	DI							AA			1	9099
HOG	HOG	II		AA			1	9099					
HOG	HOG	II							AA			1	9099
SNU	SNU	DI							AA			1	9099
SNU	SNU	II		AA			1	9099					
SNU	SNU	II							AA			1	9099

C. New MCT using new fields:

MCT #	STATION		CONNECTION	TIME	ARR CARRIER			DEPARTURE CARRIER			SUPPRESSIONS		
	ARR	DEPT	STATUS	HHMM	Carrier	Codeshare Indicator	Codeshare Operating	Carrier	Codeshare Indicator	Codeshare Operating	Region	Country	State
1			ID		AA							CU	
2			II		AA							CU	
3			DI					AA				CU	
4			II					AA				CU	

Carrier wants to suppress all connections within a certain country.

The following flights are available:

1. CM 246 PTY-HAV 1205 1545
2. AA2482 HAV-MIA 1900 2015

3. AA1447 MIA-HAV 0935 1045
4. AM452 HAV-MEX 1510 1720

The following itineraries will *not* build:

- Segments 1 and 2 because of MCT 2
- Segments 3 and 4 because of MCT 2

Because carrier AA has filed country suppression in Cuba, carrier AA will not build any connections at any Cuba stations.

Example 3: Suppression - Global Codeshare

A. Current MCT: AA on BA: 6100-6239 / AA on LY 8365-8394

AIRPORT			MCT	CARRIER		ARRIVE FLIGHT		DEPART FLIGHT	
Arr Apt	Dpt Apt	Con Typ	HH:MM	Arr Car	Dpt Car	Start Flt	End Flt	Start Flt	End Flt
AMS	AMS	II	02:00	AA	AA	6100	6239	8365	8394
AMS	AMS	II	19:59	AA	AA	6100	9099	6100	9099
AMS	AMS	II	02:00	BA	LY				

B. Mapping MCT:

STATION		CONNECTION	TIME	ARR CARRIER			ARR FLIGHT #		DEPARTURE CARRIER			DEPART FLIGHT #	
ARR	DEPT	STATUS		Carrier	Codeshare Indicator	Codeshare Operating	Range Start	Range End	Carrier	Codeshare Indicator	Codeshare Operating	Range Start	Range End
AMS	AMS	II	200	AA			6100	6239	AA			8365	8394
AMS	AMS	II	200	AA			6100	9099	AA			6100	9099
AMS	AMS	II	200	BA					LY				

C. New MCT using new fields:

MCT #	STATION		CONNECTION	TIME	ARR CARRIER			DEPARTURE CARRIER			SUPPRESSIONS		
	ARR	DEPT	STATUS	HHMM	Carrier	Codeshare Indicator	Codeshare Operating	Carrier	Codeshare Indicator	Codeshare Operating	Region	Country	State
1			II		AA	Y		AA	Y				
2	AMS	AMS	II	0200	BA			LY					
3	AMS	AMS	II	0200	AA	Y	BA	AA	Y	LY			

Carrier wants to suppress all codeshare to all codeshare but allow codeshare connections on a specific carrier to carrier.

The following flights are available:

1. BA428 LHR-AMS 0640 0905
2. LY338 AMS-TLV 1145 1720

The following itineraries will build:

Segments 1 and 2 with MCT 3

Because carrier AA has filed global codeshare suppression, carrier AA has to file a MCT codeshare exception at the station where carrier AA wants to allow codeshare connections on BA to LY.

Example 4: Aircraft Body - MCT Override

A. Current MCT: MH on AA :9330-9664

AIRPORT			MCT	CARRIER		ARRIVE FLIGHT		DEPART FLIGHT		EQUIPMENT	
Arr Apt	Dpt Apt	Con Typ	HH:MM	Arr Car	Dpt Car	Start Flt	End Flt	Start Flt	End Flt	Arrive	Depart
DFW	DFW	ID	01:25	AA	AA					WDE	
DFW	DFW	ID	01:20	AA	AA						
DFW	DFW	ID	01:25	MH	MH	9330	9664	9330	9664	WDE	
DFW	DFW	ID	01:20	MH	MH	9330	9664	9330	9664		

B. Mapping MCT:

STATION		CONNECTION	TIME	ARR CARRIER	ARR FLIGHT #		DEPARTURE CARRIER	DEPART FLIGHT #		AIRCRAFT BODY (W/N)	
ARR	DEPT	STATUS		Carrier	Range Start	Range End	Carrier	Range Start	Range End	Arrive	Depart
DFW	DFW	ID	125	AA			AA			W	
DFW	DFW	ID	120	AA			AA				
DFW	DFW	ID	125	MH	9330	9664	MH	9330	9664	W	
DFW	DFW	ID	120	MH	9330	9664	MH	9330	9664		

C. New MCT using new fields:

MCT#	STATION		CONNECTION	TIME	ARR CARRIER			DEPARTURE CARRIER			AIRCRAFT BODY (W/N)	
	ARR	DEPT	STATUS	HHMM	Carrier	Codeshare Indicator	Codeshare Operating	Carrier	Codeshare Indicator	Codeshare Operating	Arrive	Depart
1	DFW	DFW	ID	0125	AA			AA			W	
2	DFW	DFW	ID	0120	AA			AA				

Arrival “W” Wide bodied equipment requires a longer MCT

For guidance on Aircraft Body Type, refer to IATA SSIM Manual: Appendix A: IATA Aircraft Types.

The following flights are available:

- AA0280 ICN-DFW 1835 1610 Eqp 789
- AA1387 DFW-SFO 1730 1926 Eqp 321
- AA1393 DFW-SFO 1840 2044 Eqp 321

- MH9428 ICN-DFW 1835 1610 Eqp 789 (DEI 50=AA0280)
- MH9412 DFW-SFO 1730 1926 Eqp 321 (DEI 50=AA1387)
- MH9513 DFW-SFO 1840 2044 Eqp 321 (DEI 50=AA1393)

The following itineraries will build:

Segments 5 and 6 with MCT 1
Segments 5 and 6 with MCT 1

The following itineraries will *not* build:

Segments 1 and 2 because MCT 1
Connecting time is 80 and 789 W type equipment requires a minimum of 85 minutes.
Segments 4 and 5 because MCT 1
Connecting time is 80 and 789 W type equipment requires a minimum of 85 minutes.

A codeshare MCT is not necessary for MH.

Example 5: Dates - Effective from/to

A. Current MCT:

AIRPORT			MCT	CARRIER		DATE	
Arr Apt	Dpt Apt	Con Typ	HH:MM	Arr Car	Dpt Car	Effective	Disc.
LAX	LAX	DD	00:40	AA	AA		26-Mar-17
LAX	LAX	DD	00:45	AA	AA	27-Mar-17	26-Oct-17
LAX	LAX	DD	00:40	AA	AA	27-Oct-17	

B. Mapping MCT:

MCT #	STATION		CONNECTION	TIME	ARR CARRIER			DEPARTURE CARRIER			DATE	
	ARR	DEPT	STATUS		Carrier	Codeshare Indicator	Codeshare Operating	Carrier	Codeshare Indicator	Codeshare Operating	Effective From	Effective To
1	LAX	LAX	DD	40	AA			AA				26Mar17
2	LAX	LAX	DD	45	AA			AA			27-Mar-17	26-Oct-17
3	LAX	LAX	DD	40	AA			AA			27-Oct-17	

C. New MCT using new fields:

MCT #	STATION		CONNECTION	TIME	ARR CARRIER			DEPARTURE CARRIER			DATE	
	ARR	DEPT	STATUS	HHMM	Carrier	Codeshare Indicator	Codeshare Operating	Carrier	Codeshare Indicator	Codeshare Operating	Effective From	Effective To
1	LAX	LAX	DD	0040	AA			AA				26-Mar-17
2	LAX	LAX	DD	0045	AA			AA			27-Mar-17	26-Oct-17
3	LAX	LAX	DD	0040	AA			AA			27-Oct-17	

For a certain period of time, a carrier requires a longer MCT at a specific station. The following flight segments exist:

1. 15JAN17 AA0708 SFO-LAX 1300 1400
2. 15JAN17 AA2102 LAX-PHX 1440 1630
3. 28APR17 AA0708 SFO-LAX 1300 1400
4. 28APR17 AA2102 LAX-PHX 1440 1630
5. 28APR17 AA2207 LAX-PHX 1530 1720

The following itineraries will build:

- Segments 1 and 2 with MCT 1
- Segments 3 and 5 with MCT 2

The following itineraries will not build:

- Segments 3 and 4 because of MCT 2

Example 6: Codeshare Indicator

A. Current MCT:

Arrival Airport Code	MinCt [min]	Status	Departure Airport	Arrival Airline Code	Departure Airline Code	Arrival Aircraft Type	Departure Aircraft Type	Arrival Terminal Code	Departure Terminal	Previous Country Code	Previous City Code	Previous Airport Code	Next Country Code	Next City Code	Next Airport Code	Incoming FltNos.	Outgoing FltNos.	Previous State Code	Next State Code	Previous MinCt Region	Next MinCt Region
FRA	45	II		LO	LH											4731-4752					
FRA	60	II		LO						PL											SCH

B. Mapping MCT:

STATION		CONNECT ION	TIME	ARR CARRIER			ARR FLIGHT #		DEPARTURE CARRIER			DEPART FLIGHT #		COUNTRY		REGION	
ARR	DEPT	STATUS		Carrier	Codeshare Indicator	Codeshare Operating	Range Start	Range End	Carrier	Codeshare Indicator	Codeshare Operating	Range Start	Range End	Prev	Next	Prev	Next
FRA	FRA	II	45	LO			4731	4732	LH								
FRA	FRA	II	45	LO					LH					PL			SCH

C. New MCT using new fields:

STATION		CONN ECTIO N	TIME	ARR CARRIER			ARR FLIGHT #		DEPARTURE CARRIER			DEPART FLIGHT #		COUNTRY		REGION		M C T
ARR	DEPT	STATU S	HHMM	Carrier	Codeshare Indicator	Codeshare Operating	Range Start	Range End	Carrier	Codeshare Indicator	Codeshare Operating	Range Start	Range End	Prev	Next	Prev	Next	
FRA	FRA	II	0045	LO	Y	LH			LH									1
FRA	FRA	II	0100	LO										PL			SCH	2

Passenger wants to fly WAW-FRA-LYS.

The following flights are available:

1. LO379 WAW-FRA 1710 1905
2. LH1082 FRA-LYS 1950 2115 (DEI 10=LO4733)
3. LO4733 FRA-LYS 1950 2115 (DEI 50=LH1082)
4. LH1084 FRA-LYS 2030 2155 (DEI 10=LO4741)
5. LO4741 FRA-LYS 2030 2155 (DEI 50=LH1084)

Itineraries will build as follows:

LO379 will connect to LH1084 and LO4741 using the MCT 2. LO operating flights to SCH Region are being built with 0100 MCT in FRA.

Example 7: Using MCT of the Operating Carrier

A. Current MCT:

Arrival Airport Code	MinCt [min]	Status	Departure Airport	Arrival Airline Code	Departure Airline Code	Arrival Aircraft Type	Departure Aircraft Type	Arrival Terminal Code	Departure Terminal Code	Previous Country Code	Previous City Code	Previous Airport Code	Next Country Code	Next City Code	Next Airport Code	Incoming FltNos.	Outgoing FltNos.
VIE	25	ID		LO	LO											5221-5230	4065-4078
VIE	25	ID		LO	OS											5221-5230	0001-1999
VIE	25	ID		OS	OS												
VIE	25	DI		LO	LO											4065-4078	5221-5230
VIE	25	DI		OS	LO											0001-1999	5221-5230
VIE	25	DI		OS	OS												
VIE	25	II		LO	OS											5221-5230	0001-1999
VIE	25	II		OS	LO											0001-1999	5221-5230
VIE	25	II		OS	OS												

B. Mapping MCT:

STATION		CONNECTION	TIME	ARR CARRIER			ARR FLIGHT #		DEPARTURE CARRIER			DEPART FLIGHT #	
ARR	DEPT	STATUS	HH:MM	Carrier	Codeshare Indicator	Codeshare Operating	Range Start	Range End	Carrier	Codeshare Indicator	Codeshare Operating	Range Start	Range End
VIE	VIE	ID	00:25	LO			5221	5230	LO			4065	4078
VIE	VIE	ID	00:25				5221	5230	OS			1	1999
VIE	VIE	ID	00:25	OS					OS				
VIE	VIE	DI	00:25	LO			4065	4078	LO			5221	5230
VIE	VIE	DI	00:25	OS			1	1999	LO			5221	5230
VIE	VIE	DI	00:25	OS					OS				
VIE	VIE	II	00:25	LO			5221	5230	LO			1	1999
VIE	VIE	II	00:25	OS			1	1999	LO			5221	5230
VIE	VIE	II	00:25	OS					OS				

C. New MCT using new fields:

STATION		CONNECTION	TIME	ARR CARRIER			ARR FLIGHT #		DEPARTURE CARRIER			DEPART FLIGHT #		MCT
ARR	DEPT	STATUS	HHMM	Carrier	Codeshare Indicator	Codeshare Operating	Range Start	Range End	Carrier	Codeshare Indicator	Codeshare Operating	Range Start	Range End	
VIE	VIE	ID	0025	OS					OS					1
VIE	VIE	DI	0025	OS					OS					2
VIE	VIE	II	0025	OS					OS					3

In this case there is no need for LO to file for MCT exceptions in VIE. LO codeshare flights operated by OS will use MCT 1&2&3 automatically.

Example 8: Applying MCT Changes

An MCT change is a combination of a “delete” MCT record then a “add” MCT record. For a “Delete” to be actioned all fields must match the active record.

A. Current MCT:

Please change the MCT exception in WAW for LO on LO, DI, when the next airport is YYZ and incoming and outgoing flight number ranges are 1-399, from 45 to 40 min.

B. Mapping MCT:

No need for the mapping MCT, since it will be identical to the new MCT using new fields.

C. New MCT using new fields:

ACTION INDICATOR	STATION		CONNECTION	TIME	ARR CARRIER			ARR FLIGHT #		DEPARTURE CARRIER			DEPART FLIGHT #		MCT
	ARR	DEPT			STATUS	HHMM	Carrier	Codeshare Indicator	Codeshare Operating	Range Start	Range End	Carrier	Codeshare Indicator	Codeshare Operating	
D	WAW	WAW	DI	0045	LO			1	3999	LO			1	399	1
A	WAW	WAW	ID	0040	LO			1	3999	LO			1	399	2

Application of MCT exceptions should be done using the template. Unnecessary fields can be hidden.

Applying for the exceptions with the template increases transparency and ensures consistent practice.

Example 9: How do I use (Next/Previous) station, state, country or region?

Country Codes

A. Current MCT:

Arrival Airport Code	MinCt [min]	Status	Departure Airport	Arrival Airline Code	Departure Airline Code	Arrival Aircraft Type	Departure Aircraft Type	Arrival Terminal Code	Departure Terminal Code	Previous Country Code	Previous City Code	Previous Airport Code	Next Country Code	Next City Code	Next Airport Code	Incoming FitNos.	Outgoing FitNos.	Previous State Code	Next State Code	Previous MinCt Region	Next MinCt Region
WAW	40	DI		LO	LO								US			0001-3999	0001-3999				
WAW	30	DI		LO	LO											0001-3999	0001-3999				

B. Mapping MCT:

STATION		CONNECTION	TIME	ARR CARRIER			ARR FLIGHT #		DEPARTURE CARRIER			DEPART FLIGHT #		COUNTRY	
ARR	DEPT	STATUS		Carrier	Codeshare Indicator	Codeshare Operating	Range Start	Range End	Carrier	Codeshare Indicator	Codeshare Operating	Range Start	Range End	Prev	Next
WAW	WAW	DI	40	LO			1	3999	LO			1	3999		US
WAW	WAW	DI	30	LO			1	3999	LO			1	3999		

C. New MCT using new fields:

STATION		CONNECTION	TIME	ARR CARRIER			ARR FLIGHT #		DEPARTURE CARRIER			DEPART FLIGHT #		COUNTRY		
ARR	DEPT	STATUS	HHMM	Carrier	Codeshare Indicator	Codeshare Operating	Range Start	Range End	Carrier	Codeshare Indicator	Codeshare Operating	Range Start	Range End	Prev	Next	MCT
WAW	WAW	DI	0040	LO			1	3999	LO			1	3999		US	1
WAW	WAW	DI	0030	LO			1	3999	LO			1	3999			2

Passenger wants to fly WRO-WAW-JFK. The following flights are available:

1. LO26 WAW-JFK 1645 2005
2. LO3844 WRO-WAW 1515 1615
3. LO3848 WRO-WAW 1400 1500

Itineraries will build as follows:

LO3848 connects to LO26 with MCT 1.

LO3844 will not connect to LO26 because MCT 1 having filled Next Country Code takes priority over the MCT 2.

Minimum Connecting Time User Guide

Example 10: How do I use (Next/Previous) station, state, country or region?

Region Codes

A. Current MCT:

Arrival Airport Code	MinCt [min]	Status	Departure Airport	Arrival Airline Code	Departure Airline Code	Arrival Aircraft Type	Departure Aircraft Type	Arrival Terminal Code	Departure Terminal Code	Previous Country Code	Previous City Code	Previous Airport Code	Next Country Code	Next City Code	Next Airport Code	Incoming FltNos.	Outgoing FltNos.	Previous State Code	Next State Code	Previous MinCt Region	Next MinCt Region
WAW	60	ID																			
WAW	35	ID		LO	LO											0001-3999	0001-3999				
WAW	30	ID		LO	LO											0001-3999	0001-3999			SCH	

B. Mapping MCT:

STATION		CONNECTION	TIME	ARR CARRIER			ARR FLIGHT #		DEPARTURE CARRIER			DEPART FLIGHT #		COUNTRY	
ARR	DEPT	STATUS		Carrier	Codeshare Indicator	Codeshare Operating	Range Start	Range End	Carrier	Codeshare Indicator	Codeshare Operating	Range Start	Range End	Prev	Next
WAW	WAW	ID	100												
WAW	WAW	ID	35	LO			1	3999	LO			1	3999		
WAW	WAW	ID	30	LO			1	3999	LO			1	3999	SCH	

C. New MCT using new fields:

STATION		CONNECTION	TIME	ARR CARRIER			ARR FLIGHT #		DEPARTURE CARRIER			DEPART FLIGHT #		COUNTRY		
ARR	DEPT	STATUS	HHMM	Carrier	Codeshare Indicator	Codeshare Operating	Range Start	Range End	Carrier	Codeshare Indicator	Codeshare Operating	Range Start	Range End	Prev	Next	
WAW	WAW	ID	0100													Airport standard
WAW	WAW	ID	0035	LO			1	3999	LO			1	3999			MCT2
WAW	WAW	ID	0030	LO			1	3999	LO			1	3999	SCH		MCT3

Passenger wants to fly CDG-WAW-KTW. The following flights are available:

1. LO332 CDG-WAW 1045 1300
2. LO3881 WAW-KTW 1330 1425
3. LO3883 WAW-KTW 1415 1510

Itineraries will build as follows:

LO332 connects to LO3881 with MCT 3. MCT3 having Prev Region determined which can be applied while building this connection takes precedence over MCT 1&2.

Example 11: How do I use (Next/Previous) station, state, country or region?

Station Codes

A. Current MCT:

Arrival Airport Code	MinCt [min]	Status	Departure Airport	Arrival Airline Code	Departure Airline Code	Arrival Aircraft Type	Departure Aircraft Type	Arrival Terminal Code	Departure Terminal Code	Previous Country Code	Previous City Code	Previous Airport Code	Next Country Code	Next City Code	Next Airport Code	Incoming FltNos.	Outgoing FltNos.	Previous State Code	Next State Code	Previous MinCt Region	Next MinCt Region
TLL	60	II																			
TLL	25	II		LO	LO																
TLL	20	II		LO	LO							LED			KBP						

B. Mapping MCT:

STATION		CONNECTION	TIME	ARR CARRIER			ARR FLIGHT #		DEPARTURE CARRIER			DEPART FLIGHT #		STATION	
ARR	DEPT	STATUS		Carrier	Codeshare Indicator	Codeshare Operating	Range Start	Range End	Carrier	Codeshare Indicator	Codeshare Operating	Range Start	Range End	Prev	Next
TLL	TLL	II	100												
TLL	TLL	II	25	LO					LO						
TLL	TLL	II	20	LO					LO					LED	KBP

C. New MCT using new fields:

STATION		CONNECTION	TIME	ARR CARRIER			ARR FLIGHT #		DEPARTURE CARRIER			DEPART FLIGHT #		STATION		
ARR	DEPT	STATUS	HHMM	Carrier	Codeshare Indicator	Codeshare Operating	Range Start	Range End	Carrier	Codeshare Indicator	Codeshare Operating	Range Start	Range End	Prev	Next	
TLL	TLL	II	0100													Airport standard
TLL	TLL	II	0025	LO					LO							MCT2
TLL	TLL	II	0020	LO					LO					LED	KBP	MCT3

Passenger wants to fly LED-TLL-KBP.

The following flights are available:

1. LO324 LED-TLL 0910 1005
2. LO8311 TLL-KBP 1025 1215
3. LO8313 TLL-KBP 1200 1350

Itineraries will build as follows:

LO324 connects to LO8311 with MCT 3. MCT 3 having filled Next Station Code takes priority over the MCT 2 and airport standard.

Example 12: Default to Operating Carrier MCT

A. New MCT using new fields:

STATION		CONNECTION	TIME	ARR CARRIER			ARR FLIGHT #		DEPARTURE CARRIER			DEPART FLIGHT #		DATE	
ARR	DEPT	STATUS	HHMM	Carrier	Codeshare Indicator	Codeshare Operating	Range Start	Range End	Carrier	Codeshare Indicator	Codeshare Operating	Range Start	Range End	Effective From	Effective To
AMS	AMS	II	0050	KL					KL						
AMS	AMS	II	0130	KL			210	210	KL						
AMS	AMS	II	0050	KL			400	1999	KL			6000	9999		
AMS	AMS	II	0115	KL			566	566	KL					26MAR19	28OCT19

Example:

DL codeshare with KL at AMS. DL files no MCT exceptions at AMS. Based on DEI50 filings with DL flights referencing KL operating flights, MCT application will default to operating carrier values

1. DL 9667 ATL-AMS 1555-0600 operated by KL 0624
2. DL 0072 ATL-AMS 1740-0815
3. DL 9556 AMS-FRA 0950-1105 operated by KL 1765

Airport Standard II MCT – 50 minutes

Itineraries will build as follows:

- DL 9667 connecting to DL 9556 defaults to KL to KL at 00:50 based on DEI 50 filing
- DL 0072 connecting to DL 9556 defaults to Airport Standard of 00:50 per no applicable exception

Example 13: Default to Operating Carrier MCT

A. New MCT using new fields:

STATION		CONNECTION	TIME	ARR CARRIER			DEPARTURE CARRIER			TERMINAL	
ARR	DEPT	STATUS	HHMM	Carrier	Codeshare Indicator	Codeshare Operating	Carrier	Codeshare Indicator	Codeshare Operating	Arrive	Depart
SVO	SVO	ID	0120	ALL			SU			D	D
SVO	SVO	ID	0130	ALL			SU			E	D
SVO	SVO	ID	0130	ALL			SU			F	D

Example:

DL codeshare with both AF and SU at SVO. DL files no MCT exceptions at SVO. Based on DEI50 filings with DL flights referencing AF and SU operating flights, MCT application will default to operating carrier values.

1. DL 8614 CDG-SVO 0920-1500 operated by AF
2. DL 9096 SVO-LED 1750-1910 operated by SU

Itineraries will build as follows:

DL 8614, arriving SVO Terminal E, connects to DL 9026, departing SVO Terminal D, at 1:30 based on operating carrier MCT

Example 14: Filing MCT for Codeshare Flights

A. New MCT using new fields:

STATION		CONNECTION	TIME	ARR CARRIER			ARR FLIGHT #		DEPARTURE CARRIER			DEPART FLIGHT #	
ARR	DEPT	STATUS	HHMM	Carrier	Codeshare Indicator	Codeshare Operating	Range Start	Range End	Carrier	Codeshare Indicator	Codeshare Operating	Range Start	Range End
JFK	JFK	DI	0045	DL					DL				
JFK	JFK	DI	0045	DL					DL			4339	4438
JFK	JFK	DI	0045	DL					DL	Y			
JFK	JFK	DI	0045	DL					DL	Y	VS		
JFK	JFK	DI	0045	DL					DL	Y	VS	4339	4438

Example:

DL codeshares with VS at JFK. There are multiple options for filing codeshare exceptions; allowing carriers to adjust filing methods over time without impacting current displays.

DL 0040 LAX-JFK 0845-1715
 DL 4373 JFK-LHR 1830-0630 operated by VS 0004
 DL 0401 JFK-LHR 1930-0735

DL 0040 connecting to DL 0401: MCT governed by DL to DL 00:45
 DL 0040 connecting to DL 4373: MCT may be correctly filed using any of the 5 exceptions

- DL to DL Used for all DL flights regardless of the operating carrier
- DL to DL 4339-4438 Any DL flight connecting to any DL flight number in range 4339-4438
- DL to DL codeshare Any DL flight connecting to any DL codeshare flight
- DL to DL codeshare VS Any DL flight connecting to any DL codeshare flight operated by VS
- DL to DL codeshare VS Any DL flight connecting to any DL codeshare flight operated by VS using DL flight number range 4339-4438

Example 15: Transition from Flight Number Ranges to Codeshare Operating Carrier

A. New MCT using new fields:

STATION		CONNECTION	TIME	ARR CARRIER			ARR FLIGHT #		DEPARTURE CARRIER			DEPART FLIGHT #		DATE	
ARR	DEPT	STATUS	HHMM	Carrier	Codeshare Indicator	Codeshare Operating	Range Start	Range End	Carrier	Codeshare Indicator	Codeshare Operating	Range Start	Range End	Effective From	Effective To
JFK	JFK	DI	0045	DL					DL			4339	4438		31OCT19
JFK	JFK	DI	0045	DL					DL	Y	VS			01NOV19	
JFK	JFK	DI	0045	DL					DL			7632	7651		31OCT19
JFK	JFK	DI	0045	DL					DL	Y	WS			01NOV19	
JFK	JFK	DI	0045	DL					DL			1014	1023		31OCT19
JFK	JFK	DI	0045	DL					DL			8261	8729		31OCT19
JFK	JFK	DI	0045	DL					DL	Y	AF			01NOV19	

Example:

DL files updates to MCT exceptions removing codeshare flight number ranges, replacing them with the operating carrier code. Replacing flight ranges with the operating carrier reduces the number of filings required to manage MCT exceptions while providing improved clarity related to the intended application of the filing

Delta MCT exceptions for codeshare flights operated by VS, WS, AF.

DL connecting to DL 4339-4438	Replaced by DL connecting to DL operated by VS
DL connecting to DL 7632-7651	Replaced by DL connecting to DL operated by WS
DL connecting to DL 1014-1023/8261-8729	2 filings replaced by 1 filing for DL connecting to DL operated by AF

Example 16: Transition from Flight Number Ranges to Codeshare Operating Carrier

A. New MCT using new fields:

STATION		CONNECTION	TIME	ARR CARRIER			ARR FLIGHT #		DEPARTURE CARRIER			DATE	
ARR	DEPT	STATUS	HHMM	Carrier	Codeshare Indicator	Codeshare Operating	Range Start	Range End	Carrier	Codeshare Indicator	Codeshare Operating	Effective From	Effective To
PEK	PEK	DI	0130	DL			6311	6340	DL				29OCT19
PEK	PEK	DI	0130	DL			6782	6791	DL				29OCT19
PEK	PEK	DI	0200	DL			6381	6586	DL				29OCT19
PEK	PEK	DI	0200	DL			7448	7469	DL				29OCT19
PEK	PEK	DI	0200	DL			6341	6380	DL				29OCT19
PEK	PEK	DI	0200	DL			6712	6736	DL				29OCT19
PEK	PEK	DI	0130	DL					DL	Y	CZ	30OCT19	
PEK	PEK	DI	0200	DL					DL	Y	MU	30OCT19	
PEK	PEK	DI	0200	DL					DL	Y	FM	30OCT19	

Example:

DL files updates to MCT exceptions removing codeshare flight number ranges, replacing them with the operating carrier code. Replacing flight ranges with the operating carrier reduces the number of filings required to manage MCT exceptions while providing improved clarity related to the intended application of the filing

Delta MCT exceptions for codeshare flights operated by CZ, MU, FM.

- DL 129 SEA-PEK 1700-1955 Arrives Terminal 2
- DL 7825 PEK-CAN 2130-0050 operated by CZ Departs Terminal 2

PEK Airport Standard for ID T2-T2: 2:00 hours

DL marketed flight number ranges replaced by Codeshare Indicator and Codeshare Operating Carrier codes.

DL connects to DL* operated by CZ at 1:30 for dates beyond 30Oct19 instead of reverting to Airport Standard.

Example 17: MCT Exceptions by Equipment

A. New MCT using new fields:

STATION		CONNECTION	TIME	ARR CARRIER			DEPARTURE CARRIER			AIRCRAFT TYPE		AIRCRAFT BODY (W/N)	
ARR	DEPT	STATUS	HHMM	Carrier	Codeshare Indicator	Codeshare Operating	Carrier	Codeshare Indicator	Codeshare Operating	Arrive	Depart	Arrive	Depart
FRA	FRA	II	0200	ZZ			ZZ				BUS		
FRA	FRA	II	0200	ZZ			ZZ				TRN		
FRA	FRA	II	0100	ZZ			ZZ						W
FRA	FRA	II	0055	ZZ			ZZ					N	W
FRA	FRA	II	0130	ZZ			ZZ			380			

Example:

Carrier ZZ implements MCT exceptions based on the type of equipment used in a connection

Any ZZ flight connects to a ZZ flight operated by BUS at 02:00

Any ZZ flight connects to a ZZ flight operated by TRN at 02:00

Any ZZ flight connects to any ZZ wide body flight at 1:00

Any narrow body ZZ flight connects to any wide body ZZ flight at 00:55

ZZ flight on 380 aircraft connects to any narrow body ZZ flight at 01:30

ZZ flight on a 380 aircraft connects to a BUS departure at 2:00

ZZ flight on a 380 aircraft connects to a TRN departure at 2:00

ZZ flight on a 380 aircraft connects to a wide body departure at 1:00

Example 18: Dates - Date Range

A. New MCT using new fields:

STATION		CONNECTION	TIME	ARR CARRIER			DEPARTURE CARRIER			DATE	
ARR	DEPT	STATUS	HHMM	Carrier	Codeshare Indicator	Codeshare Operating	Carrier	Codeshare Indicator	Codeshare Operating	Effective From	Effective To
LAX	LAX	DD	0040	ZZ			ZZ				26MAR19
LAX	LAX	DD	0045	ZZ			ZZ			27MAR19	26OCT19
LAX	LAX	DD	0040	ZZ			ZZ			27OCT18	24MAR19
LAX	LAX	DD	0045	ZZ			ZZ			25MAR19	27OCT19

Date Range

ZZ files an exception to increase online MCT during the summer months

Carrier ZZ must file an Effective From and Effective To dates in the exception; creating the date break for the general MCT increase.

Example 19: How do I use (Next/Previous) station, state, country or region? –

Country Level: All Carriers

A. New MCT using new fields:

STATION		CONNECT ION	TIME	ARR CARRIER			DEPARTURE CARRIER			SUPPRESSIONS				DATE	
ARR	DEPT	STATUS	HHMM	Carrier	Codeshare Indicator	Codeshare Operating	Carrier	Codeshare Indicator	Codeshare Operating	Suppression Indicator (Y/N)	Region	Country	State	Effective From	Effective To
		DD		DL						Y		US		29OCT19	
		DI		DL						Y		US		29OCT19	
		ID		DL						Y		US		29OCT19	
		II		DL						Y		US		29OCT19	
		DD					DL			Y		US		29OCT19	
		DI					DL			Y		US		29OCT19	
		ID					DL			Y		US		29OCT19	
		II					DL			Y		US		29OCT19	
ATL	ATL	DD	0045	DL			DL							29OCT19	
JFK	JFK	DD	0045	DL			DL							29OCT19	
LAX	LAX	DD	0045	DL			DL							29OCT19	
SEA	SEA	DD	0045	DL			DL							29OCT19	
DTW	DTW	DD	0045	DL			DL							29OCT19	
MSP	MSP	DD	0045	DL			DL							29OCT19	
SEA	SEA	DD	0055	WS			DL							29OCT19	
LGA	LGA	DD	0055	WS			DL							29OCT19	
JFK	JFK	DD	0055	WS			DL							29OCT19	

DL files suppression for all connections in the US for DD, DI, ID, II

- Includes DL as either the Arrival or Departure Carrier (Exception must be filed in both directions and for each connection type)
- Filing includes DL-DL connections and overrides connections using the Airport Standard
- Limits ability for schedules to connect passengers over cities where processes and facilities do not support connecting traffic

DL also files exceptions for carrier specific MCT which will override the US Suppression

- Exceptions provide carrier with the ability to specify which cities they will be able to support connecting traffic

DL 2541 ATL-DSM / DL 3766 DSM-MSP	Systems will not build schedule as connections are not supported via DSM due to DD suppression
WS 3652 YUL-BOS / DL 1880 BOS-ATL	Systems will not build schedule as WS-DL interline connections are not supported due to DD suppression and not covered by WS-DL interline exception
DL 5439 MOB-ATL / DL 1557 ATL-MSP	Systems will build connections via ATL due to 00:45 minute exception for ATL overriding the DD suppression
WS 1208 YYZ-LGA / DL 1346 LGA-ATL	Systems will build connections via LGA due to 00:55 minute interline exception for LGA overriding the DD suppression
All other DI, ID, II connections	As illustrated above, no DI, ID, II connections will be built as no overriding exceptions are filed

Example 20: How do I use (Next/Previous) station, state, country or region?

Region Levels: Between Countries

A. New MCT using new fields:

STATION		CONNECTION	TIME	ARR CARRIER			DEPARTURE CARRIER			COUNTRY		REGION		SUPPRESSIONS			
ARR	DEPT	STATUS	HHMM	Carrier	Codeshare Indicator	Codeshare Operating	Carrier	Codeshare Indicator	Codeshare Operating	Prev	Next	Prev	Next	Suppression Indicator (Y/N)	Region	Country	State
		II		ZZ			ALL		US	KR				Y	EUR		
		II		ALL			ZZ		KR	US				Y	EUR		
		II		ZZ			ALL		US	FR				Y	JAK		
		II		ALL			ZZ		FR	US				Y	JAK		

ZZ files a suppression for all connections between the US and KR and the US and FR

- ZZ files a suppression for flights between the US and KR when connecting in EUR
 - Suppression pushes connections over Pacific routings instead of Atlantic routings
- ZZ files a suppression for flights between the US and FR when connecting via JAK (Japan/Korea)
 - Connections could be built via other Pacific points or over Atlantic routings
- ZZ files the suppression using Indicator A which suppresses both online and interline connections

ZZ LAX-CDG GG CDG-ICN Interline connection does not build via CDG

ZZ LAX-FRA ZZ FRA-ICN Online connection does not build via FRA

ZZ ORD-NRT YY NRT-CDG Interline connection does not build via NRT

ZZ ORD-ICN KK ICN-CDG Interline connection does not build via ICN

ZZ SEA-PEK CH PEK-CDG Interline connection may build as not restricted by MCT suppression

Example 21: How do I use (Next/Previous) station, state, country or region?

Region Levels: Restricting circuitous routings

A. New MCT using new fields:

CONNECTION	TIME	ARR CARRIER			DEPARTURE CARRIER			STATION		STATE	
STATUS	HHMM	Carrier	Codeshare Indicator	Codeshare Operating	Carrier	Codeshare Indicator	Codeshare Operating	Prev	Next	Prev	Next
DD		DL			ALL					GA	FL
DD		DL			ALL					GA	FL
DD		DL			ALL					FL	UT
DD		DL			ALL			MSY			TX

	SUPPRESSIONS				DATE	
	Suppression Indicator (Y/N)	Region	Country	State	Effective From	Effective From
	Y			NY		
	Y			MA		
	Y			NY	01JUN18	30JUN18
	Y					

- DL files geographic suppressions to restrict circuitous routings
 - DL files to restrict connections between Georgia and Florida from building when the connection is in New York or Massachusetts
 - DL files to restrict connections between Florida and Utah from building when the connection is in New York but only during the month of June 2018
 - DL files to restrict all interline connections between MSY and the state of Texas

DL ATL-JFK	DL JFK-MCO	Schedule does not build due to connection in NY
DL ATL-BOS	DL BOS-DAB	Schedule does not build due to connection in MA
DL SAV-ATL	DL ATL-MIA	Schedule may build due to connection not restricted in GA
DL MCO-JFK	DL JFK-SLC	Schedule may build except during the month of June 2018
DL MSY-ATL	DL ATL-SAT	Online connections are permitted
DL MSY-ATL	AA ATL-DFW	Interline Connections are suppressed

Example 22: File Global Suppression for Codeshare except at a Specific Station

A. New MCT using new fields:

MCT#	STATION		CONNECTION	TIME	ARR CARRIER			DEPARTURE CARRIER			SUPPRESSIONS			
	ARR	DEPT	STATUS	HHMM	Carrier	Codeshare Indicator	Codeshare Operating	Carrier	Codeshare Indicator	Codeshare Operating	Suppression Indicator (Y/N)	Region	Country	State
1			II		AA	Y		AA	Y		Y			
2	JFK	JFK	II	0200	AA	Y		AA	Y		N			

To suppress connections AA marketing onto AA Marketing, globally, but permitting in DFW.

The following flights are available:

- | | | | | |
|----|-----------------|---------|------|------|
| 1. | AA6134 (BA113) | LHR-JFK | 1615 | 1915 |
| 2. | AA8905 (CX865) | JFK-YVR | 2150 | 0050 |
| 3. | AA8645 (IB6251) | MAD-JFK | 1210 | 1420 |
| 4. | AA8962 (CX865) | JFK-YVR | 2150 | 0050 |
| 5. | AA6128 (BA49) | LHR-SEA | 1525 | 1710 |
| 6. | AA7501 (AS2508) | SEA-YVR | 2310 | 2357 |

The following itineraries will build:

- Segments 1 and 2 with MCT 2
- Segments 3 and 4 with MCT 2

The following itineraries will *not* build:

- Segments 5 and 6 because of MCT 1

Because carrier AA has filed a global codeshare to codeshare suppression, carrier AA has to file a MCT exception at the stations where carrier AA wants to allow codeshare to codeshare connections.

Example 23: How do I file a time exception? Basic time xxxx (it is hours and minutes now)

A. New MCT using new fields:

ACTION INDICATOR	STATION		CONNECTION	TIME	ARR CARRIER			ARR FLIGHT #		DEPARTURE CARRIER		
(A/D)	ARR	DEPT	STATUS	HHMM	Carrier	Codeshare Indicator	Codeshare Operating	Range Start	Range End	Carrier	Codeshare Indicator	Codeshare Operating
A	ANU	ANU	DI	0115						VS		
A	ANU	ANU	ID	0115	VS							
A	ANU	ANU	II	0100						VS		

Files exception to the standard IATA's at ANU airport

The following flights are available

1. LGWANU VS033 1000 1345
2. ANUBGI LI565 1450 1615
3. ANUBGI LI521 1500 1625

The following flight will build

Segments 1 and 3 as built for 1 Hour and 15minutes ID

Example 24: How do I file MCT suppression?

Basis – Carrier to carrier

Emphasis on Y Indicator vs. 999/19:59 Time
 Station Exception (not set up to transfer passengers)

A. Current MCT:

AIRPORT			MCT	CARRIER	
Arr	Dpt	Con		Arr	Dpt
Apt	Apt	Typ		Car	Car
LNK	LNK	DD	19:59	UA	UA

AIRPORT			MCT	CARRIER	
Arr	Dpt	Con		Arr	Dpt
Apt	Apt	Typ		Car	Car
LNK	LNK	DD	999	UA	UA

B. New MCT using new fields:

MCT #	STATION		CONNECTION	TIME	ARR CARRIER		DEPARTURE CARRIER				Suppressions			
	ARR	DEPT	STATUS	HHMM	Carrier	Codeshare Indicator	Codeshare Operating	Carrier	Codeshare Indicator	Codeshare Operating	Suppression Indicator (Y/N)	Region	Country	State
1	LNK	LNK	DD		UA			UA			Y			

Carrier wants to suppress UA to UA connections in Station

1. UA 4862 ORD-LNK 0857-1043
2. UA 4739 LNK-DEN 1255-1325

Following itinerary will not build:

Segments 1 and 2 with MCT 1

Example 25: How do I file MCT suppression?

By Region

A. New MCT using new fields:

MCT #	STATION		CONNECT ION	TIME	ARR CARRIER			DEPARTURE CARRIER			REGION		Suppressions			
	ARR	DEPT	STATUS	HHMM	Carrier	Codeshare Indicator	Codeshare Operating	Carrier	Codeshar e Indicator	Codeshare Operating	Prev	Next	Suppression Indicator (Y/N)	Region	Country	State
1	BCN	BCN	II		UA			VY				EUR	Y			
2	BCN	BCN	II		VY			UA			EUR		Y			
3	BCN	BCN	II	0045	UA			VY					N			
4	BCN	BCN	II	0045	VY			UA					N			

Carrier wants to suppress connections to Region-EUR while allowing connections outside specified Region.

1. VY 7845 TLV-BCN 0640-1020
2. VY 6109 FCO-BCN 0705-0855
3. VY 7460 AMS-BCN 0725-0940
4. UA 0121 BCN-EWR 1200-1445

Following itinerary will build:

Segments 1 and 4 with MCT 4

Following itineraries will not build:

- Segments 2 and 4 due to MCT 2
- Segments 3 and 4 due to MCT 2

**Example 26: How do I file MCT suppression? Basis – Carrier to carrier –
By Country**

A. New MCT using new fields:

MCT #	STATION		CONNECTION	TIME	ARR CARRIER			ARR FLIGHT #		DEPARTURE CARRIER		
	ARR	DEPT	STATUS	HHMM	Carrier	Codeshare Indicator	Codeshare Operating	Range Start	Range End	Carrier	Codeshare Indicator	Codeshare Operating
1	GUM	GUM	II		UA			0190	0193	UA		
2	GUM	GUM	II	0030	UA					UA		

	DEPARTURE FLIGHT #		COUNTRY		REGION		Suppressions			
	Range Start	Range End	Prev	Next	Prev	Next	Suppression Indicator (Y/N)	Region	Country	State
				US			Y			
							N			

1. UA 0193 MNL-GUM 2145-0350
2. UA 0184 MNL-GUM 2330-0530
3. UA 0174 GUM-SPN 0700-0745
4. UA 0200 GUM-HNL 0640-1800

Carrier wants to suppress connection from Flight Range 0190-0193 to the country of United States.

Following itinerary will build:

- Segments 1 and 3 with MCT 2
- Segments 2 and 3 with MCT 2
- Segments 2 and 4 with MCT 2

Following itineraries will not build:

- Segments 1 and 4 due to MCT 1

Example 27: How do I file MCT suppression?

Basis – Carrier to carrier – by State

A. New MCT using new fields:

MCT #	STATION		CONNECTION	TIME	ARR CARRIER			DEPARTURE CARRIER		
	ARR	DEPT	STATUS	HHMM	Carrier	Codeshare Indicator	Codeshare Operating	Carrier	Codeshare Indicator	Codeshare Operating
1	MCO	MCO	DD		UA			UA		
2	MCO	MCO	DD		UA			UA		

	STATE		COUNTRY		Suppressions			
	Prev	Next	Prev	Next	Suppression Indicator (Y/N)	Region	Country	State
	NJ	IL	US	US	Y			
	IL	NJ	US	US	Y			

Carrier wants to suppress State to State connections.

1. UA 1939 EWR-MCO 0730-1005
2. UA 0633 MCO-ORD 1110-1300
3. UA 0654 ORD-MCO 0610-0950
4. UA 0371 MCO-EWR 1040-1325

Following itineraries will not build:

- Segments 1 and 2 due to MCT 1
- Segments 3 and 4 due to MCT 2

Example 28:

How can I use suppression on a global scale?

Codeshare

A. New MCT using new fields:

MCT #	STATION		CONNECTION	TIME	ARR CARRIER			DEPARTURE CARRIER			Suppressions			
	ARR	DEPT	STATUS	HHMM	Carrier	Codeshare Indicator	Codeshare Operating	Carrier	Codeshare Indicator	Codeshare Operating	Suppression Indicator (Y/N)	Region	Country	State
1			DD					UA	Y	EI	Y			
2			DD		UA	Y	EI				Y			
3			DI					UA	Y	EI	Y			
4			DI		UA	Y	EI				Y			
5			ID					UA	Y	EI	Y			
6			ID		UA	Y	EI				Y			
7			II					UA	Y	EI	Y			
8			II		UA	Y	EI				Y			
9	BOS	BOS	DI	0100	UA			UA	Y	EI	N			

1. UA 0532 ORD-BOS 1126-1441
2. AA 1530 ORD-BOS 1319-1640
3. UA 7636 BOS-DUB 1745-0455 (DEI50 = EI0136)
4. LH 0977 DUB-FRA 0910-1205

Following itinerary will build:

Segments 1 and 3 with MCT 9

Following itineraries will not build:

Segments 2 and 3 due to Global Suppression MCT 3

Segments 3 and 4 due to Global Suppression MCT 8

Example 29: How do I use (Next/Previous) station, state, country or region?

Station - Country

A. New MCT using new fields:

MCT #	STATION		CONNECTION	TIME	ARR CARRIER			DEPARTURE CARRIER			STATION	
	ARR	DEPT	STATUS	HHMM	Carrier	Codeshare Indicator	Codeshare Operating	Carrier	Codeshare Indicator	Codeshare Operating	Prev	Next
1	GUM	GUM	II	0200	UA			UA			SPN	
2	GUM	GUM	II	0030	UA			UA				

MCT #	COUNTRY		Suppressions			
	Prev	Next	Suppression Indicator (Y/N)	Region	Country	State
1		PH	N			
2			N			

1. UA 6398 SPN-GUM 1625-1715
2. UA 6400 SPN-GUM 1755-1845
3. UA 0183 GUM-MNL 1920-2110
4. UA 0196 GUM-NRT 1930-2120

Following itinerary will build:

- Segments 1 and 3 with MCT 1
- Segments 1 and 4 with MCT 2
- Segments 2 and 4 with MCT 2

Following itineraries will not build:

- Segments 2 and 3 due to MCT 1
- UA flights from SPN to the Philippines require 2 hours.

Example 30: How do I use (Next/Previous) station, state, country or region?

Station - Country

A. New MCT using new fields:

STATION		CONNECT ION	TIME	ARR CARRIER			ARR FLIGHT #		DEPARTURE CARRIER			DEPART FLIGHT #	
ARR	DEPT	STATUS	HHMM	Carrier	Codeshare Indicator	Codeshare Operating	Range Start	Range End	Carrier	Codeshare Indicator	Codeshare Operating	Range Start	Range End
MAN	MAN	ID	0130	VS	Y				VS	Y			
MAN	MAN	DI	0130	VS	Y				VS	Y			
MAN	MAN	II	0130	VS	Y				VS	Y			

	TERMINAL		STATION		STATE		COUNTRY	
	Arrive	Depart	Prev	Next	Prev	Next	Prev	Next
							US	
								US
							US	US

Files exception to the standard IATA's in MAN for VS and VS* from international flights in the USA

The following flights are available

- 1 VS 076 MCO MAN 1830 0735
- 2 BA1387 MAN LHR 0840 0950
- 3 BA1389 MAN LHR 0945 1055

The following itineraries will build:

Segments 1 & 3

They build because the connection is coming from the US

Example 31:

How do I use (Next/Previous) station, state, country or region?

Station – Country

A. New MCT using new fields:

MCT #	STATION		CONNECTION	TIME	ARR CARRIER			DEPARTURE CARRIER		
	ARR	DEPT	STATUS	HHMM	Carrier	Codeshare Indicator	Codeshare Operating	Carrier	Codeshare Indicator	Codeshare Operating
1	GUM	GUM	II	0200	UA			UA		
2	GUM	GUM	II	0030	UA			UA		

	STATION		COUNTRY		Suppressions			
	Prev	Next	Prev	Next	Suppression Indicator (Y/N)	Region	Country	State
		NRT	FM		N			
					N			

1. UA 0186 YAP-GUM 0155-0325
2. UA 0188 TKK-GUM 0355-0535
3. UA 6394 SPN-GUM 0430-0515
4. UA 0828 GUM-NRT 0700-0955

Following itineraries will build:

- Segments 1 and 4 with MCT 1
- Segments 3 and 4 with MCT 2

Following itinerary will not build:

- Segment 2 and 4 due to MCT 1

UA flights from Federated States of Micronesia to NRT require 2 hours.

Example 32: How do I file a flight specific (1 flight) MCT?

A. New MCT using new fields:

MCT #	STATION		CONNECTION	TIME	ARR CARRIER			ARR FLIGHT #		DEPARTURE CARRIER		
	ARR	DEPT	STATUS	HHMM	Carrier	Codeshare Indicator	Codeshare Operating	Range Start	Range End	Carrier	Codeshare Indicator	Codeshare Operating
1	LAX	LAX	ID	0130	UA			5210	5210	UA		
2	LAX	LAX	ID	0110	UA					UA		

DEPARTURE FLIGHT #		Suppressions			
Range Start	Range End	Suppression Indicator (Y/N)	Region	Country	State
		N			
		N			

1. UA 5210 BJX-LAX 0700-0850
2. UA 0708 LAX-SFO 1000-1133
3. UA 1845 LAX-SFO 1124-1257

Following itinerary will build:

Segments 1 and 3 with MCT 1 or 2

Following itinerary will not build:

Segment 1 and 2 due to MCT 1

UA5210 requires 01:30

Example 33: How do I file a flight range and sub-set flight range?

Your airline should first review how to default to your codeshare operating carrier. Then, if you need to still file a flight range you need to be aware overlapping duplicates are not allowed

A. New MCT using new fields:

MCT #	STATION		CONNECTION	TIME	ARR CARRIER			ARR FLIGHT #		DEPARTURE CARRIER		
	ARR	DEPT	STATUS	HHMM	Carrier	Codeshare Indicator	Codeshare Operating	Range Start	Range End	Carrier	Codeshare Indicator	Codeshare Operating
1	IAD	IAD	ID	0145	UA	Y	LH	8717	8720	UA		
2	IAD	IAD	ID	0115	UA	Y	LH	8715	9614	UA		
3	IAD	IAD	ID	0145	UA	Y	LH	8713	8720	UA		

DEPARTURE FLIGHT #		Suppressions			
Range Start	Range End	Suppression Indicator (Y/N)	Region	Country	State
		N			
		N			
		N			

Carrier wants subset Flight Range of 8717-8720 to have a different MCT than the larger Flight Range

1. UA 8818 FRA-IAD 1030-1315 (DEI 50 = LH416)
2. UA 8827 FRA-IAD 1315-1600 (DEI 50 = LH418)
3. UA 4314 IAD-CLE 1435-1600
4. UA 4941 IAD-CLE 1724-1852

MCT 3 is not valid and will be rejected due to overlapping Flight Ranges of both MCT 1 and MCT 2

Following itineraries will build:

- Segments 1 and 4 with MCT 1
- Segments 2 and 4 with MCT 2

Following itinerary will not build:

- Segment 1 and 3 due to MCT 1

Example 34:

How can I use suppression on a global scale? Codeshare - I only want to connect with my own partner carriers?

A. New MCT using new fields:

STATION		CONNECTION	TIME	ARR CARRIER			DEPARTURE CARRIER		
ARR	DEPT	STATUS	HHMM	Carrier	Codeshare Indicator	Codeshare Operating	Carrier	Codeshare Indicator	Codeshare Operating
				VS					
							VS		
ATL	ATL	II	0125	VS	Y				
ATL	ATL	ID	0125	VS	Y				
ATL	ATL	DI	0040	VS	Y				
ATL	ATL	II	0125				VS	Y	
ATL	ATL	ID	0125				VS	Y	
ATL	ATL	DI	0040				VS	Y	

STATION		STATE		COUNTRY		SUPPRESSIONS				DATE	
Prev	Next	Prev	Next	Prev	Next	Suppression Indicator (Y/N)	Region	Country	State	Effective From	Effective To
						Y					
						Y					

This allows VS to suppress all connections in ATL except when connecting to VS or VS* flights

The following flights are available:

- VS0103 LHR-ATL (market) 1100 1530 (time)
- VS4832 ATL-JFK (market) 1705 1950 (time)
- B6720 ATL-JFK (market) 1825 2045 (time)

The following itineraries will build:

Segments 1 and 2 with MCT 4

The following itineraries will not build: (provide which segment will not build)

Segments 1 and 3 because of MCT 1 as the carrier suppression is on for ATL for all carrier exception VS and VS, including marketing codeshares

Because carrier VS has filed a global suppression to all airlines, VS has to file a MCT exception at the stations where it want to allow connections.

Example 35:

How do I use (Next/Previous) station, state, country or region?

Station – State

A. New MCT using new fields:

STATION		CONNECTION	TIME	ARR CARRIER			ARR FLIGHT #		DEPARTURE CARRIER		
ARR	DEPT	STATUS	HHMM	Carrier	Codeshare Indicator	Codeshare Operating	Range Start	Range End	Carrier	Codeshare Indicator	Codeshare Operating
LHR	LHR	ID	0200	VS	Y				VS	Y	
LHR	LHR	DI	0200	VS	Y				VS	Y	
LHR	LHR	II	0200	VS	Y				VS	Y	
LHR	LHR	ID	0100	VS	Y				VS	Y	
LHR	LHR	DI	0100	VS	Y				VS	Y	
LHR	LHR	II	0100	VS	Y				VS	Y	

DEPART FLIGHT #		TERMINAL		STATION		STATE		COUNTRY		REGION	
Range Start	Range End	Arrive	Depart	Prev	Next	Prev	Next	Prev	Next	Prev	Next
								NY			
									NY		
								NY	NY		

Files exception to the standard IATA's in LHR for VS and VS* from international flights in the NY State

- The following flights are available
- 1 VS0006 MIALHR 0600 2000
 - 2 VS0026 JFKLHR 0815 2010
 - 3 VS0300 LHRDEL 2150 1055

The following itineraries will build:

- Segments 2 & 3 will build
- Segments 1 & 3 will not build as it is not arriving from NY State

Example 36: How do I use (Next/Previous) station, state, country or region?

Station - Region

A. New MCT using new fields:

STATION		CONNECTION	TIME	ARR CARRIER			ARR FLIGHT #		DEPARTURE CARRIER		
ARR	DEPT	STATUS	HHMM	Carrier	Codeshare Indicator	Codeshare Operating	Range Start	Range End	Carrier	Codeshare Indicator	Codeshare Operating
MAN	MAN	ID	0130	VS	Y				VS	Y	
MAN	MAN	DI	0130	VS	Y				VS	Y	

DEPART FLIGHT #		TERMINAL		STATION		STATE		COUNTRY		REGION	
Range Start	Range End	Arrive	Depart	Prev	Next	Prev	Next	Prev	Next	Prev	Next
											CAR
											CAR

Files exception to the standard IATA's in MAN for VS* and VS* from international flights in the CAR

The following flights are available

1. VS*8481 SOUMAN 1035 1130
2. VS 0077 MANBGI 1300 1655
3. VS 0127 MANJFK 1305 1500

The following itineraries will build:

Segments 1 & 2 will build

Segments 1 & 3 will not build as it is not departing to CAR region

Example 37: How do I file MCT suppression for ALL Carriers?

New MCT using new fields:

Carrier wants to suppress ALL connections including themselves.

MCT #	STATION		CONNECTION	TIME	ARR CARRIER			DEPARTURE CARRIER			SUPPRESSIONS
	ARR	DEPT	STATUS	HHMM	Carrier	Codeshare Indicator	Codeshare Operating	Carrier	Codeshare Indicator	Codeshare Operating	Suppression Indicator (Y/N)
1	ABE	ABE	DD					UA	Y		Y
2	ABE	ABE	DD					UA			Y
3	ABE	ABE	DD		UA	Y					Y
4	ABE	ABE	DD		UA						Y
5	ABE	ABE	DD	0020							N

1. UA 8333 YUL-ABE 1515-1645 DEI50 = AC, DEI220 = ID
2. UA 4862 EWR-ABE 1515-1640
3. UA 3982 ABE-EWR 1730-1850
4. DL 4249 ABE-DTW 1735-1923
5. AA 5140 ABE-CLT 1859-2107

Following itineraries will not build:

- Segments 1 and 3 with MCT 3
- Segments 2 and 3 with MCT 4
- Segments 3 and 4 with MCT 2
- Segments 3 and 5 with MCT 2

Example 38: How do I file MCT suppression for ALL Carriers?

Station Exception with Existing MCT's

New MCT using new fields:

Carrier wants to suppress ALL connections including themselves,

Existing MCT's

STATION		CONNECTION	TIME	ARR CARRIER			DEPARTURE CARRIER			SUPPRESSIONS
ARR	DEPT	STATUS		Carrier	Codeshare Indicator	Codeshare Operating	Carrier	Codeshare Indicator	Codeshare Operating	Suppression Indicator (Y/N)
ABE	ABE	DD	30				AA			N
ABE	ABE	DD	30	AA						N
ABE	ABE	DD	20							

New Station Carrier Suppression

MCT #	STATION		CONNECTION	TIME	ARR CARRIER			DEPARTURE CARRIER			SUPPRESSIONS
	ARR	DEPT	STATUS	HHMM	Carrier	Codeshare Indicator	Codeshare Operating	Carrier	Codeshare Indicator	Codeshare Operating	Suppression Indicator (Y/N)
1	ABE	ABE	DD		UA	Y		AA			Y
2	ABE	ABE	DD		UA			AA			Y
3	ABE	ABE	DD	0030				AA			N
4	ABE	ABE	DD					UA	Y		Y
5	ABE	ABE	DD					UA			Y
6	ABE	ABE	DD	0030	AA						N
7	ABE	ABE	DD		UA	Y					Y
8	ABE	ABE	DD		UA						Y

1. UA 4862 EWR-ABE 1515-1640
2. UA 3982 ABE-ORD 1730-1850
3. DL 4249 ABE-DTW 1735-1923
4. AA 5140 ABE-CLT 1859-2107

Following itineraries will not build:

- Segments 1 and 2 with MCT 5
- Segments 1 and 3 with MCT 5
- Segments 1 and 4 with MCT 2

Example 39: How do I file MCT suppression for ALL Carriers?

By Region

New MCT using new fields:

Carrier wants to suppress ALL connections including themselves from Philippines to North America.

MCT #	STATION		CONNECTION	TIME	ARR CARRIER			DEPARTURE CARRIER			COUNTRY		REGION		SUPPRESSIONS
	ARR	DEPT	STATUS	HHMM	Carrier	Codeshare Indicator	Codeshare Operating	Carrier	Codeshare Indicator	Codeshare Operating	Prev	Next	Prev	Next	Suppression Indicator (Y/N)
1	GUM	GUM	II					UA			PH			NOA	Y
2	GUM	GUM	II					UA	Y		PH			NOA	Y
3	GUM	GUM	II	0115											N

1. UA 0184 MNL-GUM 2225-0425
2. PR 0110 MNL-GUM 2245-0445
3. UA 0200 GUM-HNL 0640-1800
4. UA 0828 GUM-NRT 0700-0955

Following itineraries will build:

- Segments 1 and 4 with MCT 3
- Segments 2 and 4 with MCT 3

Following itineraries will not build:

- Segments 1 and 3 with MCT 1
- Segments 2 and 3 with MCT 1

Example 40: How do I file MCT suppression for ALL Carriers?

By Country

New MCT using new fields:

Carrier wants to suppress ALL connections including themselves in Station for Country Mexico

MCT #	STATION		CONNECTION	TIME	ARR CARRIER			DEPARTURE CARRIER			COUNTRY		REGION		SUPPRESSIONS
	ARR	DEPT	STATUS	HHMM	Carrier	Codeshare Indicator	Codeshare Operating	Carrier	Codeshare Indicator	Codeshare Operating	Prev	Next	Prev	Next	Suppression Indicator (Y/N)
1	AUS	AUS	DI					UA	Y			MX			Y
2	AUS	AUS	DI					UA				MX			Y
3	AUS	AUS	DI		UA	Y						MX			Y
4	AUS	AUS	DI		UA							MX			Y
5	AUS	AUS	DI	0100											N

1. DL 2397 MSP-AUS 0730-1015
2. UA 4862 DEN-AUS 0800-1100
3. UA 1003 AUS-CUN 1200-1430
4. AM 2687 AUS-MEX 1350-1615

All itineraries will not build.

Example 41: How do I file MCT suppression for ALL Carriers?

By State

New MCT using new fields:

Carrier wants to suppress ALL connections including themselves in Station from District of Columbia to Texas

MCT #	STATION		CONNECTION	TIME	ARR CARRIER			DEPARTURE CARRIER			STATE		SUPPRESSIONS
	ARR	DEPT	STATUS	HHMM	Carrier	Codeshare Indicator	Codeshare Operating	Carrier	Codeshare Indicator	Codeshare Operating	Prev	Next	Suppression Indicator (Y/N)
1	MCO	MCO	DD					UA	Y		DC	TX	Y
2	MCO	MCO	DD					UA			DC	TX	Y
3	MCO	MCO	DD		UA	Y					DC	TX	Y
4	MCO	MCO	DD		UA						DC	TX	Y
5	MCO	MCO	DD	0055									N

1. F9 1623 IAD-MCO 0600 0820
2. B6 1223 DCA-MCO 0805-1030
3. UA 0778 IAD-MCO 0855-1110
4. UA 1230 MCO-IAH 1210-1340
5. NK 0713 MCO-IAH 1225-1406

All itineraries will not build.

Example 42: How do I file a time exception?

19:59/999 will no longer suppress connections from being build and will be rejected. (When filing MCT Suppressions, the time is no longer required; the field must be blank

A. New MCT using new fields:

MCT #	STATION		CONNECTION	TIME	ARR CARRIER			DEPARTURE CARRIER			SUPPRESSIONS			
	ARR	DEPT	STATUS	HHMM	Carrier	Codeshare Indicator	Codeshare Operating	Carrier	Codeshare Indicator	Codeshare Operating	Suppression Indicator (Y/N)	Region	Country	State
1			ID		AA						Y		CU	
2			II		AA						Y		CU	
3			DI					AA			Y		CU	
4			II					AA			Y		CU	

Time field no longer required (999/19:59 will no longer suppress connections from being build and will be rejected).

Minimum Connecting Time User Guide

IATA SSIM Chapter 8-Minimum Connecting Time (MCT) Standards

Document Amendments

Section	Type of Change	Amendment	Effective
	Creation		November 2018
II & III		Email addresses & website links revised	February 2020

Table of Contents

I.	Introduction.....	4
	Purpose.....	4
	Responsibility.....	4
	Standard Schedule Information Manual.....	4
II.	MCT Exceptions Request.....	5
	Process Flow Chart - Illustration of a MCT Exception Request Process.....	5
	Process Flow Chart - Illustration of a MCT Exception Request Data Aggregators Process.....	6
	Process Organization - Illustration of the MCT Data Flow.....	7
III.	MCT Carrier Submission Template.....	8
IV.	Record Type 2 mapping.....	9
V.	Examples.....	10

I. Introduction

Purpose

The purpose of this document is to provide users a guideline for processing MCT filings according to the **IATA Standard Schedule Information Manual (SSIM) Chapter 8 – Presentation, Application and Transfer of Minimum Connecting Time (MCT) data**.

The user guide is intended to help current users understand the new MCT standards introduced in 2018. It is recommended for best business practice to purchase a copy of the current **SSIM Manual**. IATA strongly encourages all carriers to follow the published SSIM manual.

This guide illustrates and describes, step by step, the process of the MCT request before and after submission. It also contains the information of MCT Carrier Submission Template.

A large portion of the user guide is dedicated to show different MCT filing scenarios. The guide provides examples of general MCTs filings and very specific MCTs filings for Current, Mapping and New MCTs. For the new MCT filings, the example scenarios describe how itineraries will build with the new MCT standards.

Responsibility

The responsibility for maintaining the User Guide is mandated to the Minimum Connect Time Group (MCTG). Any changes to the user guide document will require agreement via the change control process established by the MCTG. This ensures the guide cannot be changed or new items introduced without the agreement of the MCTG.

Standard Schedule Information Manual

SSIM Chapter 8 – Minimum Connecting Time describes the rules for submission and application of the MCT for processing. To facilitate industry-wide implementation, a range of optional features, such as the use of suppressions, codeshare indicators and other optional MCT data elements, etc. are included in the new chapter.

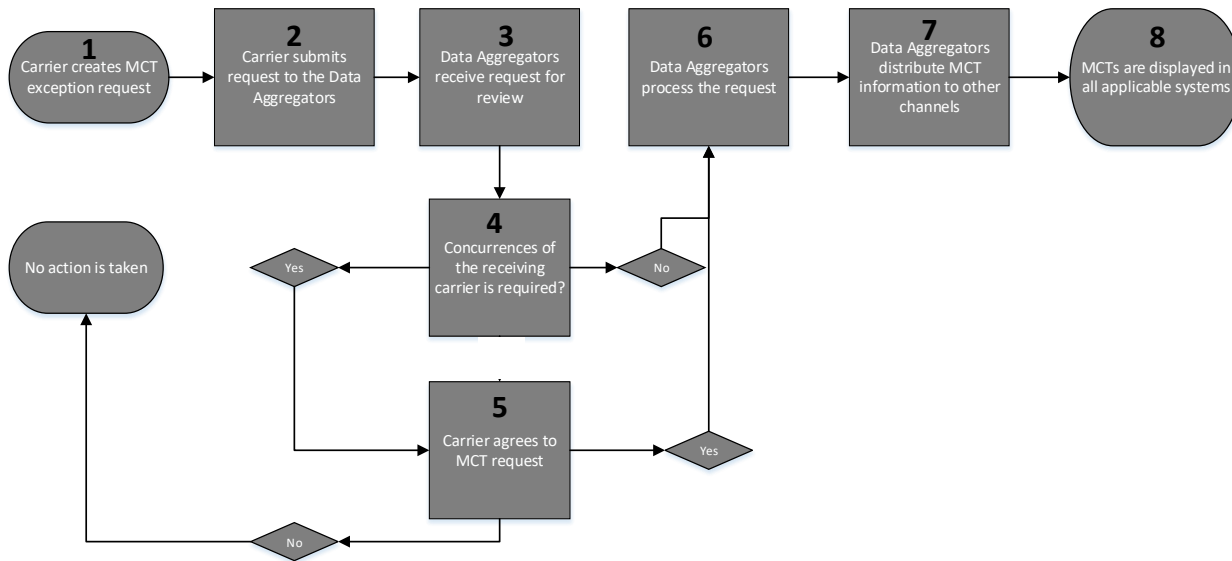
The administration of MCTs is governed by IATA PSC Resolution 765 and as required, MCTs must be observed by all ticketing and reservations outlets and are used by automated reservations systems. It is therefore of the utmost importance to ensure MCTs are correctly established, updated and uniformly quoted and used at all times. In a *passenger* context, MCT is defined as the shortest time interval required in order to transfer a passenger and his luggage from one flight to a connecting flight, in a specific location or metropolitan area.

In a *cargo* context, the MCT can be defined as the shortest time interval required in order to transfer cargo shipment from one flight to a connecting flight. **SSIM Chapter 8 – Minimum Connect Time section 8.1 General**

The MCT Data Elements were added to the 2018 SSIM Chapter 8 and were not in the previous versions of the SSIM Manual. For the complete lists, please refer to the **SSIM Chapter 8 – Minimum Connect Time section 8.7 MCT Data Elements Glossary**.

II. MCT Exceptions Request

Process Flow Chart - Illustration of a MCT Exception Request Process



1. Carrier creates MCT exception request

It is recommended that carriers submit their MCT data in the new MCT Template located on the IATA website: <http://www.iata.org/psc-plan>.

2. Carrier submits request to the Data Aggregators

Contact information: MCT@Cirium.com

Contact information: MCT@oag.com

3. Data Aggregators receive request for review

4. A concurrence of the receiving carrier is required?

Yes – Proceed to Step 5

No- Proceed to Step 6

5. Carrier agrees to MCT request?

Yes – Proceed to Step 6

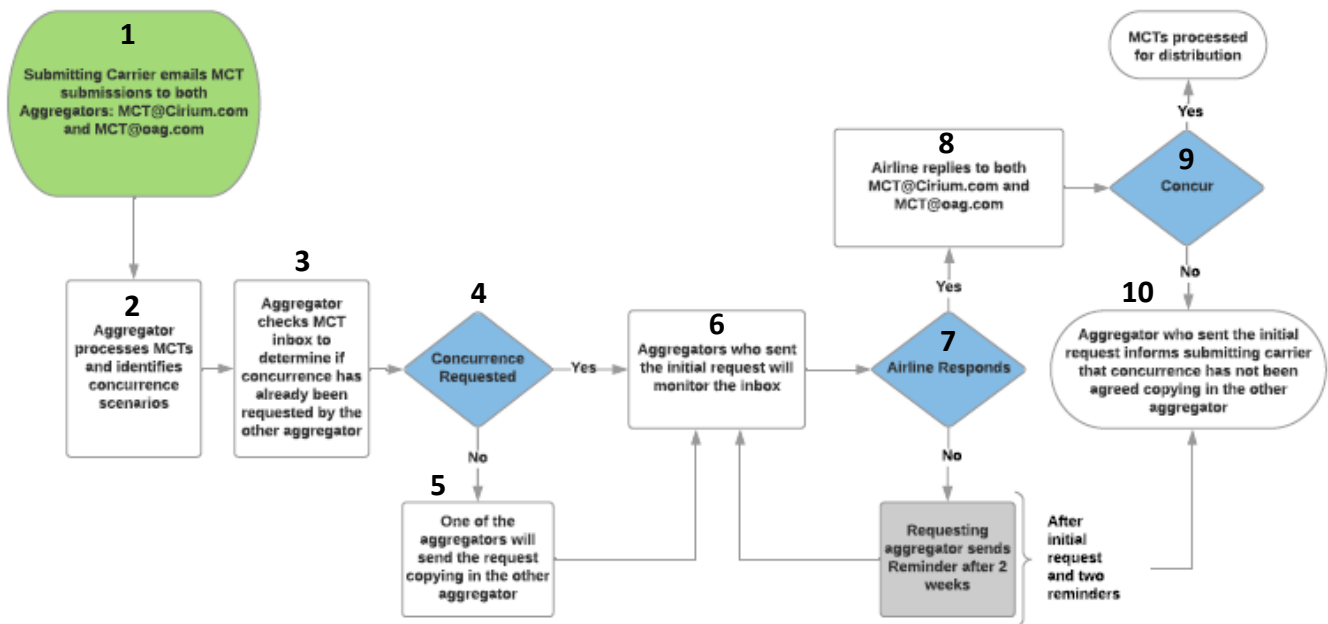
No – “No action is taken”

6. Data Aggregators process the request

7. Data aggregators distribute MCT information to other channels

8. MCTs are displayed in all applicable systems

Process Flow Chart - Illustration of a MCT Exception Request Data Aggregators Process



1. Submitting Carriers Emails MCT submissions to both aggregators

Contact information: MCT@cirium.com

Contact information: MCT@oag.com

2. Aggregators processes MCTs and identifies concurrences scenarios

3. Aggregator checks MCT inbox to determine if concurrence has already been requested by the other aggregators

4. Concurrence requested

Yes – Proceed to Step 6

No- Proceed to Step 5

5. One of the aggregators will send the request copying in the other aggregators

6. Aggregators who sent the initial request will monitor the inbox

7. Airline responds

Yes – Proceed to Step 8

No- Proceed to Step 10

8. Airline replies to both MCT@cirium.com and MCT@oag.com

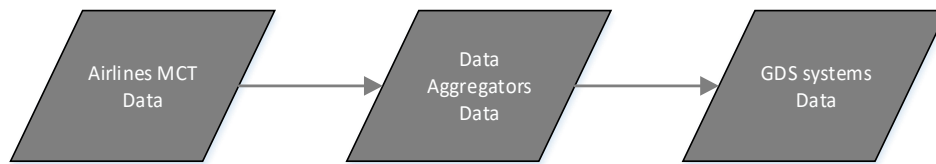
9. Concur

Yes – MCT is process for distribution

No - Proceed to Step 10

10. Aggregators who sent the initial request informs submitting carrier that concurrences has not been agreed copying in the other aggregators (Requesting aggregators sends reminder after 2 weeks)

Process Organization - Illustration of the MCT Data Flow



Any discrepancies of the MCT data should be reported to the Airlines for review.

III. MCT Carrier Submission Template

It is recommended that carriers submit their MCT data in the following order. The Template is available at <http://www.iata.org/psc-plan>.

The data elements order of template is not the same as the priority order listed on the hierarchy table.

The images below of the template have been enlarged for viewing purpose.

Section 1:

ACTION INDICATOR	STATION		CONNECTION	TIME	ARR CARRIER			ARR FLIGHT #	
<u>(A/D)</u>	<u>ARR</u>	<u>DEPT</u>	<u>STATUS</u>	<u>HHMM</u>	<u>Carrier</u>	<u>Codeshare Indicator</u>	<u>Codeshare Operating</u>	<u>Range Start</u>	<u>Range End</u>

Section 2:

DEPARTURE CARRIER			DEPART FLIGHT #		TERMINAL		STATION		STATE	
<u>Carrier</u>	<u>Codeshare Indicator</u>	<u>Codeshare Operating</u>	<u>Range Start</u>	<u>Range End</u>	<u>Arrive</u>	<u>Depart</u>	<u>Prev</u>	<u>Next</u>	<u>Prev</u>	<u>Next</u>

Section 3:

COUNTRY		REGION		AIRCRAFT TYPE		AIRCRAFT BODY (W/N)	
<u>Prev</u>	<u>Next</u>	<u>Prev</u>	<u>Next</u>	<u>Arrive</u>	<u>Depart</u>	<u>Arrive</u>	<u>Depart</u>

Section 4:

SUPPRESSIONS				DATE	
<u>Suppression Indicator (Y/N)</u>	<u>Region</u>	<u>Country</u>	<u>State</u>	<u>Effective From</u>	<u>Effective To</u>

IV. Record Type 2 mapping

This table defines the mapping from the Old MCT Data Elements to the New MCT Data Elements. *Colour-filled cells represent where there is no direct mapping between old and new*

Old Format Fields	New Format Fields
	Record Type
Arrival Airport	Arrival Station
Time (MMM)	Time (HHMM)
Status (DD,DI,ID,II)	Status (DD,DI,ID,II)
Departure Airport	Departure Station
Arrival Carrier	Arrival Carrier
	Arrival Codeshare Indicator
	Arrival Codeshare Operating Carrier
Departure Carrier	Departure Carrier
	Departure Codeshare Indicator
	Departure Codeshare Operating Carrier
Arrival Aircraft Type/Body	Arrival Aircraft Type
Arrival Aircraft Type/Body	Arrival Aircraft Body
Departure Aircraft Type/Body	Departure Aircraft Type
Departure Aircraft Type/Body	Departure Aircraft Body
Arrival Terminal	Arrival Terminal
Departure Terminal	Departure Terminal
Previous Country	Previous Country
Previous City	
Previous Airport	Previous Station
Next Country	Next Country
Next City	
Next Airport	Next Station
Arrival Flight Number Range Start	Arrival Flight Number Range Start
Arrival Flight Number Range End	Arrival Flight Number Range End
Departure Flight Number Range Start	Departure Flight Number Range Start
Departure Flight Number Range End	Departure Flight Number Range End
Previous State	Previous State
Next State	Next State
Previous Region	Previous Region
Next Region	Next Region
Effective From Date(Local)	Effective From Date(Local)
Effective To Date(Local)	Effective To Date(Local)
	Suppression Indicator
	Suppression Region
	Suppression Country
	Suppression State
	Submitting Carrier Identifier
	Filing Date(UTC)
	Action Indicator
	Record Serial Number

V. Examples

A. How do I file MCT exceptions?

This section is intended to help the user file MCTs exceptions according to the SSIM chapter 8. Please refer to Section VIII. Examples B. Example Template on use and read the examples.

a. How can I use suppression on a global scale?

- Suppression Global Carrier – Suppress connections with another carrier but choose to allow connection in specific stations. *Example 1*
- Suppression -Country – Suppress all connections within a certain country. *Example 2*
- Suppression –Global Codeshare – Suppress all codeshare to all codeshare but allow codeshare connections for a specific carrier to carrier. *Example 3*

b. How do I use Aircraft body?

- Aircraft – MCT Override – Arrival “W” wide bodied equipment requires a longer MCT. *Example 4*

c. How do I use effective from and effective to dates?

- Effective to/from- Certain period of time, carrier requires a longer MCT at a specific station *Example 5*

d. How do I use the codeshare indicator field?

- Codeshare Indicator *Example 6*

e. How do I use the Operating Carrier MCT

- Using MCT of the Operating Carrier *Example 7*

f. Change - (Delete and Add)

- Applying MCT Changes *Example 8*

g. How do I use (Next/Previous) station, state, country or region?

- How do I use (Next/Previous) Country – *Example 9*
- How do I use (Next/Previous) Region Codes – *Example 10*
- How do I use (Next/Previous) Station Codes – *Example 11*

h. How do I use the codeshare indicator field?

- Default to Operation Carrier – *Example 12 and 13*

i. How do I file using Codeshare Flights?

- Codeshare Flights – *Example 14*

j. How do file a MCT transition from flight numbers ranges to codeshare operating carrier - *Example 15 and 16*

k. How do I use aircraft type?

- MCT Exceptions by Equipment – *Example 17*

l. How do I use effective from and effective to dates?

- *Dates - Date Range – Example 18*

m. How do I use (Next/Previous) station, state, country or region?

- Country Level – All Carriers - *Example 19*

- Regions levels –Between Countries *Example 20*
- Regions levels –. Restricting circuitous routings *Example 21*

n. How do I file MCT Global Suppression for Codeshare except at a Specific Station?

Example 22

o. How do I file a time exception? *Example 23*

p. How do I file MCT suppression? Basic - Carrier to Carrier

- Emphasis on Y Indicator vs. 999 Time *Example 24*

q. How do I change an MCT I have already filed with the data aggregator? *Example 8*

r. How do I file MCT suppression? Basic - Carrier to Carrier

- by Region *Example 25*
- by Country *Example 26*
- by State *Example 27*

s. How do I file MCT suppression for ALL Carriers? All including my carrier.

Example 28

t. How do I use (Next/Previous) station, state, country or region?

- Station – Country *Example 29 and 30*
- Country – Station *Example 31*

u. How do I file a flight specific (1 flight) MCT?

Example 32

v. How do I file a flight range and sub-set flight range?

Example 33

w. How can I use suppression on a global scale?

Example 34

x. How do I use (Next/Previous) station, state, country or region?

- Station – State *Example 35*
- Station Region *Example 36*

y. How do I file MCT Suppression for All carriers?

- Station Exception *Example 37 and 38*
- By Region *Example 39*
- By Country *Example 40*
- By State *Example 41*

z. How do I file a time exception?

Example 42

B. Example Template:

Below is information on how to use and read the examples.
 (This example should not be used as guidance for the new MCT format.)

MCTG Examples Template

unnecessary fields will be hidden

Current MCT: Airlines send MCT requests in multiple formats, below is an example on how an airline currently sends the request to file an MCT

MCT Mapping: Please refer to section IV. Record type 2 Mapping

New MCT using new fields: The data might look the same as the MCT Mapping if the carrier chooses not to convert their mapped data to the New MCT using new fields.

Scenario, MCT examples using new template (hide unnecessary fields), show how itineraries will build

STATION		CONNECTION	TIME	ARR CARRIER			ARR FLIGHT #		DEPARTURE CARRIER			DEPART FLIGHT #		TERMINAL	
ARR	DEPT	STATUS		Carrier	Codeshare Indicator	Codeshare Operating	Range Start	Range End	Carrier	Codeshare Indicator	Codeshare Operating	Range Start	Range End	Arrive	Depart
LHR	LHR	II	100	AA					BA					3	3

This section describes the segments available and show how itineraries will build.

Passenger wants to fly LHR-JFK-ATL.

The following flights are available:

1. AA1345 LHR-JFK 2200 1730
2. DL0810 JFK-ATL 1820 2120
3. VS2810 JFK-ATL 1820 2120 (DEI 50=DL0810)
4. DL0910 JFK-ATL 1855 2155
5. VS1700 JFK-ATL 1855 2155 (DEI 50=DL0910)

Itineraries will build as follows:

VS1345 connects to DL0810 with MCT 3

VS1345 connects to VS1700 with MCT 1

Minimum Connecting Time User Guide

Example 1: Suppression - Global Carrier

A. Current MCT:

AIRPORT			MCT	CARRIER		ARRIVE FLIGHT		DEPART FLIGHT		EQUIPMENT		STATION		COUNTRY	
Arr Apt	Dpt Apt	Con Typ	HH:MM	Arr Car	Dpt Car	Start Flt	End Flt	Start Flt	End Flt	Arrive	Depart	Prev	Next	Prev	Next
BCN	BCN	II	01:30	AA	VY										
FCO	FCO	ID	01:30	AA	VY										
AAL	AAL	ID	19:59	AA	VY	1	9099								
AAL	AAL	II	19:59	AA	VY	1	9099								
ACC	ACC	ID	19:59	AA	VY	1	9099								
ACC	ACC	II	19:59	AA	VY	1	9099								
ACE	ACE	ID	19:59	AA	VY	1	9099								
ACE	ACE	II	19:59	AA	VY	1	9099								
AGP	AGP	ID	19:59	AA	VY	1	9099								
AGP	AGP	II	19:59	AA	VY	1	9099								
ALC	ALC	ID	19:59	AA	VY	1	9099								
ALC	ALC	II	19:59	AA	VY	1	9099								

B. Mapping MCT:

MCT#	STATION		CONNECTION	TIME	ARR CARRIER			DEPARTURE CARRIER			SUPPRESSIONS				
	ARR	DEPT	STATUS		Carrier	Codeshare Indicator	Codeshare Operating	Carrier	Codeshare Indicator	Codeshare Operating	Carrier Suppression Indicator (A/X)	Suppression Indicator (Y/N)	Region	Country	State
1	BCN	BCN	II	01:30	AA			VY							
2	FCO	FCO	ID	01:30	AA			VY							
3	AAL	AAL	ID		AA			VY				Y			
4	AAL	AAL	II		AA			VY				Y			
5	ACC	ACC	ID		AA			VY				Y			
6	ACC	ACC	II		AA			VY				Y			
7	ACE	ACE	ID		AA			VY				Y			
8	ACE	ACE	II		AA			VY				Y			
9	AGP	AGP	ID		AA			VY				Y			
10	AGP	AGP	II		AA			VY				Y			
11	ALC	ALC	ID		AA			VY				Y			
12	ALC	ALC	II		AA			VY				Y			

C. New MCT using new fields:

MCT#	STATION		CONNECTION	TIME	ARR CARRIER			DEPARTURE CARRIER			SUPPRESSIONS			
	ARR	DEPT	STATUS	HHMM	Carrier	Codeshare Indicator	Codeshare Operating	Carrier	Codeshare Indicator	Codeshare Operating	Suppression Indicator (Y/N)	Region	Country	State
1			II		AA			VY			Y			
2			ID		AA			VY			Y			
3	BCN	BCN	ID	0200	AA			VY			N			
4	FCO	FCO	II	0200	AA			VY			N			

Carrier wants to suppress all connections with another carrier. Carriers choose to allow connections in specific stations (suppression override).

To suppress connections between AA and VY- Except in BCN/FCO

The following flights are available:

1. AA0112 MIA-BCN 1805 0910
2. VY2125 BNC-AGP 1205 1345

3. AA0720 CLT-FCO 0630 0945
4. VY6686 FCO-VIE 1425 1610

5. AA220 DFW-AMS 1550 0815
6. VY8301 AMS-BCN 1020 1235

The following itineraries will build:

Segments 1 and 2 with MCT 3
 Segments 3 and 4 with MCT 4

The following itineraries will *not* build:

Segments 5 and 6 because of MCT 1

Because carrier AA has filed a global suppression to VY, carrier AA has to file a MCT exception at the stations where carrier AA wants to allow connections with carrier VY.

Minimum Connecting Time User Guide

Example 2: Suppression - Country

A. Current MCT:

AIRPORT			MCT	CARRIER		ARRIVE FLIGHT		DEPART FLIGHT	
Arr Apt	Dpt Apt	Con Typ	HH:MM	Arr Car	Dpt Car	Start Flt	End Flt	Start Flt	End Flt
HAV	HAV	DI	19:59		AA			1	9099
HAV	HAV	II	19:59	AA		1	9099		
HAV	HAV	II	19:59		AA			1	9099
VRA	VRA	DI	19:59		AA			1	9099
VRA	VRA	II	19:59	AA		1	9099		
VRA	VRA	II	19:59		AA			1	9099
HOG	HOG	DI	19:59		AA			1	9099
HOG	HOG	II	19:59	AA		1	9099		
HOG	HOG	II	19:59		AA			1	9099
SNU	SNU	DI	19:59		AA			1	9099
SNU	SNU	II	19:59	AA		1	9099		
SNU	SNU	II	19:59		AA			1	9099

B. Mapping MCT:

STATION		CONNECTION	TIME	ARR CARRIER			ARR FLIGHT #		DEPARTURE CARRIER			DEPART FLIGHT #	
ARR	DEPT	STATUS		Carrier	Codeshare Indicator	Codeshare Operating	Range Start	Range End	Carrier	Codeshare Indicator	Codeshare Operating	Range Start	Range End
HAV	HAV	DI							AA			1	9099
HAV	HAV	II		AA			1	9099					
HAV	HAV	II							AA			1	9099
VRA	VRA	DI							AA			1	9099
VRA	VRA	II		AA			1	9099					
VRA	VRA	II							AA			1	9099
HOG	HOG	DI							AA			1	9099
HOG	HOG	II		AA			1	9099					
HOG	HOG	II							AA			1	9099
SNU	SNU	DI							AA			1	9099
SNU	SNU	II		AA			1	9099					
SNU	SNU	II							AA			1	9099

C. New MCT using new fields:

MCT #	STATION		CONNECTION	TIME	ARR CARRIER			DEPARTURE CARRIER			SUPPRESSIONS		
	ARR	DEPT	STATUS	HHMM	Carrier	Codeshare Indicator	Codeshare Operating	Carrier	Codeshare Indicator	Codeshare Operating	Region	Country	State
1			ID		AA							CU	
2			II		AA							CU	
3			DI					AA				CU	
4			II					AA				CU	

Carrier wants to suppress all connections within a certain country.

The following flights are available:

1. CM 246 PTY-HAV 1205 1545
2. AA2482 HAV-MIA 1900 2015

3. AA1447 MIA-HAV 0935 1045
4. AM452 HAV-MEX 1510 1720

The following itineraries will *not* build:

- Segments 1 and 2 because of MCT 2
- Segments 3 and 4 because of MCT 2

Because carrier AA has filed country suppression in Cuba, carrier AA will not build any connections at any Cuba stations.

Example 3: Suppression - Global Codeshare

A. Current MCT: AA on BA: 6100-6239 / AA on LY 8365-8394

AIRPORT			MCT	CARRIER		ARRIVE FLIGHT		DEPART FLIGHT	
Arr Apt	Dpt Apt	Con Typ	HH:MM	Arr Car	Dpt Car	Start Flt	End Flt	Start Flt	End Flt
AMS	AMS	II	02:00	AA	AA	6100	6239	8365	8394
AMS	AMS	II	19:59	AA	AA	6100	9099	6100	9099
AMS	AMS	II	02:00	BA	LY				

B. Mapping MCT:

STATION		CONNECTION	TIME	ARR CARRIER			ARR FLIGHT #		DEPARTURE CARRIER			DEPART FLIGHT #	
ARR	DEPT	STATUS		Carrier	Codeshare Indicator	Codeshare Operating	Range Start	Range End	Carrier	Codeshare Indicator	Codeshare Operating	Range Start	Range End
AMS	AMS	II	200	AA			6100	6239	AA			8365	8394
AMS	AMS	II	200	AA			6100	9099	AA			6100	9099
AMS	AMS	II	200	BA					LY				

C. New MCT using new fields:

MCT #	STATION		CONNECTION	TIME	ARR CARRIER			DEPARTURE CARRIER			SUPPRESSIONS		
	ARR	DEPT	STATUS	HHMM	Carrier	Codeshare Indicator	Codeshare Operating	Carrier	Codeshare Indicator	Codeshare Operating	Region	Country	State
1			II		AA	Y		AA	Y				
2	AMS	AMS	II	0200	BA			LY					
3	AMS	AMS	II	0200	AA	Y	BA	AA	Y	LY			

Carrier wants to suppress all codeshare to all codeshare but allow codeshare connections on a specific carrier to carrier.

The following flights are available:

1. BA428 LHR-AMS 0640 0905
2. LY338 AMS-TLV 1145 1720

The following itineraries will build:

Segments 1 and 2 with MCT 3

Because carrier AA has filed global codeshare suppression, carrier AA has to file a MCT codeshare exception at the station where carrier AA wants to allow codeshare connections on BA to LY.

Example 4: Aircraft Body - MCT Override

A. Current MCT: MH on AA :9330-9664

AIRPORT			MCT	CARRIER		ARRIVE FLIGHT		DEPART FLIGHT		EQUIPMENT	
Arr Apt	Dpt Apt	Con Typ	HH:MM	Arr Car	Dpt Car	Start Flt	End Flt	Start Flt	End Flt	Arrive	Depart
DFW	DFW	ID	01:25	AA	AA					WDE	
DFW	DFW	ID	01:20	AA	AA						
DFW	DFW	ID	01:25	MH	MH	9330	9664	9330	9664	WDE	
DFW	DFW	ID	01:20	MH	MH	9330	9664	9330	9664		

B. Mapping MCT:

STATION		CONNECTION	TIME	ARR CARRIER	ARR FLIGHT #		DEPARTURE CARRIER	DEPART FLIGHT #		AIRCRAFT BODY (W/N)	
ARR	DEPT	STATUS		Carrier	Range Start	Range End	Carrier	Range Start	Range End	Arrive	Depart
DFW	DFW	ID	125	AA			AA			W	
DFW	DFW	ID	120	AA			AA				
DFW	DFW	ID	125	MH	9330	9664	MH	9330	9664	W	
DFW	DFW	ID	120	MH	9330	9664	MH	9330	9664		

C. New MCT using new fields:

MCT#	STATION		CONNECTION	TIME	ARR CARRIER			DEPARTURE CARRIER			AIRCRAFT BODY (W/N)	
	ARR	DEPT	STATUS	HHMM	Carrier	Codeshare Indicator	Codeshare Operating	Carrier	Codeshare Indicator	Codeshare Operating	Arrive	Depart
1	DFW	DFW	ID	0125	AA			AA			W	
2	DFW	DFW	ID	0120	AA			AA				

Arrival “W” Wide bodied equipment requires a longer MCT

For guidance on Aircraft Body Type, refer to IATA SSIM Manual: Appendix A: IATA Aircraft Types.

The following flights are available:

- AA0280 ICN-DFW 1835 1610 Eqp 789
- AA1387 DFW-SFO 1730 1926 Eqp 321
- AA1393 DFW-SFO 1840 2044 Eqp 321

- MH9428 ICN-DFW 1835 1610 Eqp 789 (DEI 50=AA0280)
- MH9412 DFW-SFO 1730 1926 Eqp 321 (DEI 50=AA1387)
- MH9513 DFW-SFO 1840 2044 Eqp 321 (DEI 50=AA1393)

The following itineraries will build:

Segments 5 and 6 with MCT 1
Segments 5 and 6 with MCT 1

The following itineraries will *not* build:

Segments 1 and 2 because MCT 1
Connecting time is 80 and 789 W type equipment requires a minimum of 85 minutes.
Segments 4 and 5 because MCT 1
Connecting time is 80 and 789 W type equipment requires a minimum of 85 minutes.

A codeshare MCT is not necessary for MH.

Example 5: Dates - Effective from/to

A. Current MCT:

AIRPORT			MCT	CARRIER		DATE	
Arr Apt	Dpt Apt	Con Typ	HH:MM	Arr Car	Dpt Car	Effective	Disc.
LAX	LAX	DD	00:40	AA	AA		26-Mar-17
LAX	LAX	DD	00:45	AA	AA	27-Mar-17	26-Oct-17
LAX	LAX	DD	00:40	AA	AA	27-Oct-17	

B. Mapping MCT:

MCT #	STATION		CONNECTION	TIME	ARR CARRIER			DEPARTURE CARRIER			DATE	
	ARR	DEPT	STATUS		Carrier	Codeshare Indicator	Codeshare Operating	Carrier	Codeshare Indicator	Codeshare Operating	Effective From	Effective To
1	LAX	LAX	DD	40	AA			AA				26Mar17
2	LAX	LAX	DD	45	AA			AA			27-Mar-17	26-Oct-17
3	LAX	LAX	DD	40	AA			AA			27-Oct-17	

C. New MCT using new fields:

MCT #	STATION		CONNECTION	TIME	ARR CARRIER			DEPARTURE CARRIER			DATE	
	ARR	DEPT	STATUS	HHMM	Carrier	Codeshare Indicator	Codeshare Operating	Carrier	Codeshare Indicator	Codeshare Operating	Effective From	Effective To
1	LAX	LAX	DD	0040	AA			AA				26-Mar-17
2	LAX	LAX	DD	0045	AA			AA			27-Mar-17	26-Oct-17
3	LAX	LAX	DD	0040	AA			AA			27-Oct-17	

For a certain period of time, a carrier requires a longer MCT at a specific station. The following flight segments exist:

1. 15JAN17 AA0708 SFO-LAX 1300 1400
2. 15JAN17 AA2102 LAX-PHX 1440 1630
3. 28APR17 AA0708 SFO-LAX 1300 1400
4. 28APR17 AA2102 LAX-PHX 1440 1630
5. 28APR17 AA2207 LAX-PHX 1530 1720

The following itineraries will build:

- Segments 1 and 2 with MCT 1
- Segments 3 and 5 with MCT 2

The following itineraries will not build:

- Segments 3 and 4 because of MCT 2

Example 6: Codeshare Indicator

A. Current MCT:

Arrival Airport Code	MinCt [min]	Status	Departure Airport	Arrival Airline Code	Departure Airline Code	Arrival Aircraft Type	Departure Aircraft Type	Arrival Terminal Code	Departure Terminal	Previous Country Code	Previous City Code	Previous Airport Code	Next Country Code	Next City Code	Next Airport Code	Incoming FltNos.	Outgoing FltNos.	Previous State Code	Next State Code	Previous MinCt Region	Next MinCt Region
FRA	45	II		LO	LH											4731-4752					
FRA	60	II		LO						PL											SCH

B. Mapping MCT:

STATION		CONNECT ION	TIME	ARR CARRIER			ARR FLIGHT #		DEPARTURE CARRIER			DEPART FLIGHT #		COUNTRY		REGION	
ARR	DEPT	STATUS		Carrier	Codeshare Indicator	Codeshare Operating	Range Start	Range End	Carrier	Codeshare Indicator	Codeshare Operating	Range Start	Range End	Prev	Next	Prev	Next
FRA	FRA	II	45	LO			4731	4732	LH								
FRA	FRA	II	45	LO					LH					PL			SCH

C. New MCT using new fields:

STATION		CONN ECTIO N	TIME	ARR CARRIER			ARR FLIGHT #		DEPARTURE CARRIER			DEPART FLIGHT #		COUNTRY		REGION		M C T
ARR	DEPT	STATU S	HHMM	Carrier	Codeshare Indicator	Codeshare Operating	Range Start	Range End	Carrier	Codeshare Indicator	Codeshare Operating	Range Start	Range End	Prev	Next	Prev	Next	
FRA	FRA	II	0045	LO	Y	LH			LH									1
FRA	FRA	II	0100	LO										PL			SCH	2

Passenger wants to fly WAW-FRA-LYS.

The following flights are available:

1. LO379 WAW-FRA 1710 1905
2. LH1082 FRA-LYS 1950 2115 (DEI 10=LO4733)
3. LO4733 FRA-LYS 1950 2115 (DEI 50=LH1082)
4. LH1084 FRA-LYS 2030 2155 (DEI 10=LO4741)
5. LO4741 FRA-LYS 2030 2155 (DEI 50=LH1084)

Itineraries will build as follows:

LO379 will connect to LH1084 and LO4741 using the MCT 2. LO operating flights to SCH Region are being built with 0100 MCT in FRA.

Example 7: Using MCT of the Operating Carrier

A. Current MCT:

Arrival Airport Code	MinCt [min]	Status	Departure Airport	Arrival Airline Code	Departure Airline Code	Arrival Aircraft Type	Departure Aircraft Type	Arrival Terminal Code	Departure Terminal Code	Previous Country Code	Previous City Code	Previous Airport Code	Next Country Code	Next City Code	Next Airport Code	Incoming FltNos.	Outgoing FltNos.
VIE	25	ID		LO	LO											5221-5230	4065-4078
VIE	25	ID		LO	OS											5221-5230	0001-1999
VIE	25	ID		OS	OS												
VIE	25	DI		LO	LO											4065-4078	5221-5230
VIE	25	DI		OS	LO											0001-1999	5221-5230
VIE	25	DI		OS	OS												
VIE	25	II		LO	OS											5221-5230	0001-1999
VIE	25	II		OS	LO											0001-1999	5221-5230
VIE	25	II		OS	OS												

B. Mapping MCT:

STATION		CONNECTION	TIME	ARR CARRIER			ARR FLIGHT #		DEPARTURE CARRIER			DEPART FLIGHT #	
ARR	DEPT	STATUS	HH:MM	Carrier	Codeshare Indicator	Codeshare Operating	Range Start	Range End	Carrier	Codeshare Indicator	Codeshare Operating	Range Start	Range End
VIE	VIE	ID	00:25	LO			5221	5230	LO			4065	4078
VIE	VIE	ID	00:25				5221	5230	OS			1	1999
VIE	VIE	ID	00:25	OS					OS				
VIE	VIE	DI	00:25	LO			4065	4078	LO			5221	5230
VIE	VIE	DI	00:25	OS			1	1999	LO			5221	5230
VIE	VIE	DI	00:25	OS					OS				
VIE	VIE	II	00:25	LO			5221	5230	LO			1	1999
VIE	VIE	II	00:25	OS			1	1999	LO			5221	5230
VIE	VIE	II	00:25	OS					OS				

C. New MCT using new fields:

STATION		CONNECTION	TIME	ARR CARRIER			ARR FLIGHT #		DEPARTURE CARRIER			DEPART FLIGHT #		MCT
ARR	DEPT	STATUS	HHMM	Carrier	Codeshare Indicator	Codeshare Operating	Range Start	Range End	Carrier	Codeshare Indicator	Codeshare Operating	Range Start	Range End	
VIE	VIE	ID	0025	OS					OS					1
VIE	VIE	DI	0025	OS					OS					2
VIE	VIE	II	0025	OS					OS					3

In this case there is no need for LO to file for MCT exceptions in VIE. LO codeshare flights operated by OS will use MCT 1&2&3 automatically.

Example 8: Applying MCT Changes

An MCT change is a combination of a “delete” MCT record then a “add” MCT record. For a “Delete” to be actioned all fields must match the active record.

A. Current MCT:

Please change the MCT exception in WAW for LO on LO, DI, when the next airport is YYZ and incoming and outgoing flight number ranges are 1-399, from 45 to 40 min.

B. Mapping MCT:

No need for the mapping MCT, since it will be identical to the new MCT using new fields.

C. New MCT using new fields:

ACTION INDICATOR	STATION		CONNECTION	TIME	ARR CARRIER			ARR FLIGHT #		DEPARTURE CARRIER			DEPART FLIGHT #		MCT
	ARR	DEPT			STATUS	HHMM	Carrier	Codeshare Indicator	Codeshare Operating	Range Start	Range End	Carrier	Codeshare Indicator	Codeshare Operating	
D	WAW	WAW	DI	0045	LO			1	3999	LO			1	399	1
A	WAW	WAW	ID	0040	LO			1	3999	LO			1	399	2

Application of MCT exceptions should be done using the template. Unnecessary fields can be hidden.

Applying for the exceptions with the template increases transparency and ensures consistent practice.

Example 9: How do I use (Next/Previous) station, state, country or region?

Country Codes

A. Current MCT:

Arrival Airport Code	MinCt [min]	Status	Departure Airport	Arrival Airline Code	Departure Airline Code	Arrival Aircraft Type	Departure Aircraft Type	Arrival Terminal Code	Departure Terminal Code	Previous Country Code	Previous City Code	Previous Airport Code	Next Country Code	Next City Code	Next Airport Code	Incoming FitNos.	Outgoing FitNos.	Previous State Code	Next State Code	Previous MinCt Region	Next MinCt Region
WAW	40	DI		LO	LO								US			0001-3999	0001-3999				
WAW	30	DI		LO	LO											0001-3999	0001-3999				

B. Mapping MCT:

STATION		CONNECTION	TIME	ARR CARRIER			ARR FLIGHT #		DEPARTURE CARRIER			DEPART FLIGHT #		COUNTRY	
ARR	DEPT	STATUS		Carrier	Codeshare Indicator	Codeshare Operating	Range Start	Range End	Carrier	Codeshare Indicator	Codeshare Operating	Range Start	Range End	Prev	Next
WAW	WAW	DI	40	LO			1	3999	LO			1	3999		US
WAW	WAW	DI	30	LO			1	3999	LO			1	3999		

C. New MCT using new fields:

STATION		CONNECTION	TIME	ARR CARRIER			ARR FLIGHT #		DEPARTURE CARRIER			DEPART FLIGHT #		COUNTRY		
ARR	DEPT	STATUS	HHMM	Carrier	Codeshare Indicator	Codeshare Operating	Range Start	Range End	Carrier	Codeshare Indicator	Codeshare Operating	Range Start	Range End	Prev	Next	MCT
WAW	WAW	DI	0040	LO			1	3999	LO			1	3999		US	1
WAW	WAW	DI	0030	LO			1	3999	LO			1	3999			2

Passenger wants to fly WRO-WAW-JFK. The following flights are available:

1. LO26 WAW-JFK 1645 2005
2. LO3844 WRO-WAW 1515 1615
3. LO3848 WRO-WAW 1400 1500

Itineraries will build as follows:

LO3848 connects to LO26 with MCT 1.

LO3844 will not connect to LO26 because MCT 1 having filled Next Country Code takes priority over the MCT 2.

Minimum Connecting Time User Guide

Example 10: How do I use (Next/Previous) station, state, country or region?

Region Codes

A. Current MCT:

Arrival Airport Code	MinCt [min]	Status	Departure Airport Code	Arrival Airline Code	Departure Airline Code	Arrival Aircraft Type	Departure Aircraft Type	Arrival Terminal Code	Departure Terminal Code	Previous Country Code	Previous City Code	Previous Airport Code	Next Country Code	Next City Code	Next Airport Code	Incoming FltNos.	Outgoing FltNos.	Previous State Code	Next State Code	Previous MinCt Region	Next MinCt Region
WAW	60	ID																			
WAW	35	ID		LO	LO											0001-3999	0001-3999				
WAW	30	ID		LO	LO											0001-3999	0001-3999			SCH	

B. Mapping MCT:

STATION		CONNECTION	TIME	ARR CARRIER			ARR FLIGHT #		DEPARTURE CARRIER			DEPART FLIGHT #		COUNTRY	
ARR	DEPT	STATUS		Carrier	Codeshare Indicator	Codeshare Operating	Range Start	Range End	Carrier	Codeshare Indicator	Codeshare Operating	Range Start	Range End	Prev	Next
WAW	WAW	ID	100												
WAW	WAW	ID	35	LO			1	3999	LO			1	3999		
WAW	WAW	ID	30	LO			1	3999	LO			1	3999	SCH	

C. New MCT using new fields:

STATION		CONNECTION	TIME	ARR CARRIER			ARR FLIGHT #		DEPARTURE CARRIER			DEPART FLIGHT #		COUNTRY		
ARR	DEPT	STATUS	HHMM	Carrier	Codeshare Indicator	Codeshare Operating	Range Start	Range End	Carrier	Codeshare Indicator	Codeshare Operating	Range Start	Range End	Prev	Next	
WAW	WAW	ID	0100													Airport standard
WAW	WAW	ID	0035	LO			1	3999	LO			1	3999			MCT2
WAW	WAW	ID	0030	LO			1	3999	LO			1	3999	SCH		MCT3

Passenger wants to fly CDG-WAW-KTW. The following flights are available:

1. LO332 CDG-WAW 1045 1300
2. LO3881 WAW-KTW 1330 1425
3. LO3883 WAW-KTW 1415 1510

Itineraries will build as follows:

LO332 connects to LO3881 with MCT 3. MCT3 having Prev Region determined which can be applied while building this connection takes precedence over MCT 1&2.

Example 11: How do I use (Next/Previous) station, state, country or region?

Station Codes

A. Current MCT:

Arrival Airport Code	MinCt [min]	Status	Departure Airport	Arrival Airline Code	Departure Airline Code	Arrival Aircraft Type	Departure Aircraft Type	Arrival Terminal Code	Departure Terminal Code	Previous Country Code	Previous City Code	Previous Airport Code	Next Country Code	Next City Code	Next Airport Code	Incoming FltNos.	Outgoing FltNos.	Previous State Code	Next State Code	Previous MinCt Region	Next MinCt Region
TLL	60	II																			
TLL	25	II		LO	LO																
TLL	20	II		LO	LO							LED			KBP						

B. Mapping MCT:

STATION		CONNECTION	TIME	ARR CARRIER			ARR FLIGHT #		DEPARTURE CARRIER			DEPART FLIGHT #		STATION	
ARR	DEPT	STATUS		Carrier	Codeshare Indicator	Codeshare Operating	Range Start	Range End	Carrier	Codeshare Indicator	Codeshare Operating	Range Start	Range End	Prev	Next
TLL	TLL	II	100												
TLL	TLL	II	25	LO					LO						
TLL	TLL	II	20	LO					LO					LED	KBP

C. New MCT using new fields:

STATION		CONNECTION	TIME	ARR CARRIER			ARR FLIGHT #		DEPARTURE CARRIER			DEPART FLIGHT #		STATION		
ARR	DEPT	STATUS	HHMM	Carrier	Codeshare Indicator	Codeshare Operating	Range Start	Range End	Carrier	Codeshare Indicator	Codeshare Operating	Range Start	Range End	Prev	Next	
TLL	TLL	II	0100													Airport standard
TLL	TLL	II	0025	LO					LO							MCT2
TLL	TLL	II	0020	LO					LO					LED	KBP	MCT3

Passenger wants to fly LED-TLL-KBP.

The following flights are available:

1. LO324 LED-TLL 0910 1005
2. LO8311 TLL-KBP 1025 1215
3. LO8313 TLL-KBP 1200 1350

Itineraries will build as follows:

LO324 connects to LO8311 with MCT 3. MCT 3 having filled Next Station Code takes priority over the MCT 2 and airport standard.

Example 12: Default to Operating Carrier MCT

A. New MCT using new fields:

STATION		CONNECTION	TIME	ARR CARRIER			ARR FLIGHT #		DEPARTURE CARRIER			DEPART FLIGHT #		DATE	
ARR	DEPT	STATUS	HHMM	Carrier	Codeshare Indicator	Codeshare Operating	Range Start	Range End	Carrier	Codeshare Indicator	Codeshare Operating	Range Start	Range End	Effective From	Effective To
AMS	AMS	II	0050	KL					KL						
AMS	AMS	II	0130	KL			210	210	KL						
AMS	AMS	II	0050	KL			400	1999	KL			6000	9999		
AMS	AMS	II	0115	KL			566	566	KL					26MAR19	28OCT19

Example:

DL codeshare with KL at AMS. DL files no MCT exceptions at AMS. Based on DEI50 filings with DL flights referencing KL operating flights, MCT application will default to operating carrier values

1. DL 9667 ATL-AMS 1555-0600 operated by KL 0624
2. DL 0072 ATL-AMS 1740-0815
3. DL 9556 AMS-FRA 0950-1105 operated by KL 1765

Airport Standard II MCT – 50 minutes

Itineraries will build as follows:

- DL 9667 connecting to DL 9556 defaults to KL to KL at 00:50 based on DEI 50 filing
- DL 0072 connecting to DL 9556 defaults to Airport Standard of 00:50 per no applicable exception

Example 13: Default to Operating Carrier MCT

A. New MCT using new fields:

STATION		CONNECTION	TIME	ARR CARRIER			DEPARTURE CARRIER			TERMINAL	
ARR	DEPT	STATUS	HHMM	Carrier	Codeshare Indicator	Codeshare Operating	Carrier	Codeshare Indicator	Codeshare Operating	Arrive	Depart
SVO	SVO	ID	0120	ALL			SU			D	D
SVO	SVO	ID	0130	ALL			SU			E	D
SVO	SVO	ID	0130	ALL			SU			F	D

Example:

DL codeshare with both AF and SU at SVO. DL files no MCT exceptions at SVO. Based on DEI50 filings with DL flights referencing AF and SU operating flights, MCT application will default to operating carrier values.

- 1. DL 8614 CDG-SVO 0920-1500 operated by AF
- 2. DL 9096 SVO-LED 1750-1910 operated by SU

Itineraries will build as follows:

DL 8614, arriving SVO Terminal E, connects to DL 9026, departing SVO Terminal D, at 1:30 based on operating carrier MCT

Example 14: Filing MCT for Codeshare Flights

A. New MCT using new fields:

STATION		CONNECTION	TIME	ARR CARRIER			ARR FLIGHT #		DEPARTURE CARRIER			DEPART FLIGHT #	
ARR	DEPT	STATUS	HHMM	Carrier	Codeshare Indicator	Codeshare Operating	Range Start	Range End	Carrier	Codeshare Indicator	Codeshare Operating	Range Start	Range End
JFK	JFK	DI	0045	DL					DL				
JFK	JFK	DI	0045	DL					DL			4339	4438
JFK	JFK	DI	0045	DL					DL	Y			
JFK	JFK	DI	0045	DL					DL	Y	VS		
JFK	JFK	DI	0045	DL					DL	Y	VS	4339	4438

Example:

DL codeshares with VS at JFK. There are multiple options for filing codeshare exceptions; allowing carriers to adjust filing methods over time without impacting current displays.

DL 0040 LAX-JFK 0845-1715
 DL 4373 JFK-LHR 1830-0630 operated by VS 0004
 DL 0401 JFK-LHR 1930-0735

DL 0040 connecting to DL 0401: MCT governed by DL to DL 00:45
 DL 0040 connecting to DL 4373: MCT may be correctly filed using any of the 5 exceptions

- DL to DL Used for all DL flights regardless of the operating carrier
- DL to DL 4339-4438 Any DL flight connecting to any DL flight number in range 4339-4438
- DL to DL codeshare Any DL flight connecting to any DL codeshare flight
- DL to DL codeshare VS Any DL flight connecting to any DL codeshare flight operated by VS
- DL to DL codeshare VS Any DL flight connecting to any DL codeshare flight operated by VS using DL flight number range 4339-4438

Example 15: Transition from Flight Number Ranges to Codeshare Operating Carrier

A. New MCT using new fields:

STATION		CONNECTION	TIME	ARR CARRIER			ARR FLIGHT #		DEPARTURE CARRIER			DEPART FLIGHT #		DATE	
ARR	DEPT	STATUS	HHMM	Carrier	Codeshare Indicator	Codeshare Operating	Range Start	Range End	Carrier	Codeshare Indicator	Codeshare Operating	Range Start	Range End	Effective From	Effective To
JFK	JFK	DI	0045	DL					DL			4339	4438		31OCT19
JFK	JFK	DI	0045	DL					DL	Y	VS			01NOV19	
JFK	JFK	DI	0045	DL					DL			7632	7651		31OCT19
JFK	JFK	DI	0045	DL					DL	Y	WS			01NOV19	
JFK	JFK	DI	0045	DL					DL			1014	1023		31OCT19
JFK	JFK	DI	0045	DL					DL			8261	8729		31OCT19
JFK	JFK	DI	0045	DL					DL	Y	AF			01NOV19	

Example:

DL files updates to MCT exceptions removing codeshare flight number ranges, replacing them with the operating carrier code. Replacing flight ranges with the operating carrier reduces the number of filings required to manage MCT exceptions while providing improved clarity related to the intended application of the filing

Delta MCT exceptions for codeshare flights operated by VS, WS, AF.

DL connecting to DL 4339-4438	Replaced by DL connecting to DL operated by VS
DL connecting to DL 7632-7651	Replaced by DL connecting to DL operated by WS
DL connecting to DL 1014-1023/8261-8729	2 filings replaced by 1 filing for DL connecting to DL operated by AF

Example 16: Transition from Flight Number Ranges to Codeshare Operating Carrier

A. New MCT using new fields:

STATION		CONNECTION	TIME	ARR CARRIER			ARR FLIGHT #		DEPARTURE CARRIER			DATE	
ARR	DEPT	STATUS	HHMM	Carrier	Codeshare Indicator	Codeshare Operating	Range Start	Range End	Carrier	Codeshare Indicator	Codeshare Operating	Effective From	Effective To
PEK	PEK	DI	0130	DL			6311	6340	DL				29OCT19
PEK	PEK	DI	0130	DL			6782	6791	DL				29OCT19
PEK	PEK	DI	0200	DL			6381	6586	DL				29OCT19
PEK	PEK	DI	0200	DL			7448	7469	DL				29OCT19
PEK	PEK	DI	0200	DL			6341	6380	DL				29OCT19
PEK	PEK	DI	0200	DL			6712	6736	DL				29OCT19
PEK	PEK	DI	0130	DL					DL	Y	CZ	30OCT19	
PEK	PEK	DI	0200	DL					DL	Y	MU	30OCT19	
PEK	PEK	DI	0200	DL					DL	Y	FM	30OCT19	

Example:

DL files updates to MCT exceptions removing codeshare flight number ranges, replacing them with the operating carrier code. Replacing flight ranges with the operating carrier reduces the number of filings required to manage MCT exceptions while providing improved clarity related to the intended application of the filing

Delta MCT exceptions for codeshare flights operated by CZ, MU, FM.

- DL 129 SEA-PEK 1700-1955 Arrives Terminal 2
- DL 7825 PEK-CAN 2130-0050 operated by CZ Departs Terminal 2

PEK Airport Standard for ID T2-T2: 2:00 hours

DL marketed flight number ranges replaced by Codeshare Indicator and Codeshare Operating Carrier codes.

DL connects to DL* operated by CZ at 1:30 for dates beyond 30Oct19 instead of reverting to Airport Standard.

Example 17: MCT Exceptions by Equipment

A. New MCT using new fields:

STATION		CONNECTION	TIME	ARR CARRIER			DEPARTURE CARRIER			AIRCRAFT TYPE		AIRCRAFT BODY (W/N)	
ARR	DEPT	STATUS	HHMM	Carrier	Codeshare Indicator	Codeshare Operating	Carrier	Codeshare Indicator	Codeshare Operating	Arrive	Depart	Arrive	Depart
FRA	FRA	II	0200	ZZ			ZZ				BUS		
FRA	FRA	II	0200	ZZ			ZZ				TRN		
FRA	FRA	II	0100	ZZ			ZZ						W
FRA	FRA	II	0055	ZZ			ZZ					N	W
FRA	FRA	II	0130	ZZ			ZZ			380			

Example:

Carrier ZZ implements MCT exceptions based on the type of equipment used in a connection

Any ZZ flight connects to a ZZ flight operated by BUS at 02:00

Any ZZ flight connects to a ZZ flight operated by TRN at 02:00

Any ZZ flight connects to any ZZ wide body flight at 1:00

Any narrow body ZZ flight connects to any wide body ZZ flight at 00:55

ZZ flight on 380 aircraft connects to any narrow body ZZ flight at 01:30

ZZ flight on a 380 aircraft connects to a BUS departure at 2:00

ZZ flight on a 380 aircraft connects to a TRN departure at 2:00

ZZ flight on a 380 aircraft connects to a wide body departure at 1:00

Example 18: Dates - Date Range

A. New MCT using new fields:

STATION		CONNECTION	TIME	ARR CARRIER			DEPARTURE CARRIER			DATE	
ARR	DEPT	STATUS	HHMM	Carrier	Codeshare Indicator	Codeshare Operating	Carrier	Codeshare Indicator	Codeshare Operating	Effective From	Effective To
LAX	LAX	DD	0040	ZZ			ZZ				26MAR19
LAX	LAX	DD	0045	ZZ			ZZ			27MAR19	26OCT19
LAX	LAX	DD	0040	ZZ			ZZ			27OCT18	24MAR19
LAX	LAX	DD	0045	ZZ			ZZ			25MAR19	27OCT19

Date Range

ZZ files an exception to increase online MCT during the summer months

Carrier ZZ must file an Effective From and Effective To dates in the exception; creating the date break for the general MCT increase.

Example 19: How do I use (Next/Previous) station, state, country or region? –

Country Level: All Carriers

A. New MCT using new fields:

STATION		CONNECT ION	TIME	ARR CARRIER			DEPARTURE CARRIER			SUPPRESSIONS				DATE	
ARR	DEPT	STATUS	HHMM	Carrier	Codeshare Indicator	Codeshare Operating	Carrier	Codeshare Indicator	Codeshare Operating	Suppression Indicator (Y/N)	Region	Country	State	Effective From	Effective To
		DD		DL						Y		US		29OCT19	
		DI		DL						Y		US		29OCT19	
		ID		DL						Y		US		29OCT19	
		II		DL						Y		US		29OCT19	
		DD					DL			Y		US		29OCT19	
		DI					DL			Y		US		29OCT19	
		ID					DL			Y		US		29OCT19	
		II					DL			Y		US		29OCT19	
ATL	ATL	DD	0045	DL			DL							29OCT19	
JFK	JFK	DD	0045	DL			DL							29OCT19	
LAX	LAX	DD	0045	DL			DL							29OCT19	
SEA	SEA	DD	0045	DL			DL							29OCT19	
DTW	DTW	DD	0045	DL			DL							29OCT19	
MSP	MSP	DD	0045	DL			DL							29OCT19	
SEA	SEA	DD	0055	WS			DL							29OCT19	
LGA	LGA	DD	0055	WS			DL							29OCT19	
JFK	JFK	DD	0055	WS			DL							29OCT19	

DL files suppression for all connections in the US for DD, DI, ID, II

- Includes DL as either the Arrival or Departure Carrier (Exception must be filed in both directions and for each connection type)
- Filing includes DL-DL connections and overrides connections using the Airport Standard
- Limits ability for schedules to connect passengers over cities where processes and facilities do not support connecting traffic

DL also files exceptions for carrier specific MCT which will override the US Suppression

- Exceptions provide carrier with the ability to specify which cities they will be able to support connecting traffic

DL 2541 ATL-DSM / DL 3766 DSM-MSP	Systems will not build schedule as connections are not supported via DSM due to DD suppression
WS 3652 YUL-BOS / DL 1880 BOS-ATL	Systems will not build schedule as WS-DL interline connections are not supported due to DD suppression and not covered by WS-DL interline exception
DL 5439 MOB-ATL / DL 1557 ATL-MSP	Systems will build connections via ATL due to 00:45 minute exception for ATL overriding the DD suppression
WS 1208 YYZ-LGA / DL 1346 LGA-ATL	Systems will build connections via LGA due to 00:55 minute interline exception for LGA overriding the DD suppression
All other DI, ID, II connections	As illustrated above, no DI, ID, II connections will be built as no overriding exceptions are filed

Example 20: How do I use (Next/Previous) station, state, country or region?

Region Levels: Between Countries

A. New MCT using new fields:

STATION		CONNECTION	TIME	ARR CARRIER			DEPARTURE CARRIER			COUNTRY		REGION		SUPPRESSIONS			
ARR	DEPT	STATUS	HHMM	Carrier	Codeshare Indicator	Codeshare Operating	Carrier	Codeshare Indicator	Codeshare Operating	Prev	Next	Prev	Next	Suppression Indicator (Y/N)	Region	Country	State
		II		ZZ			ALL		US	KR				Y	EUR		
		II		ALL			ZZ		KR	US				Y	EUR		
		II		ZZ			ALL		US	FR				Y	JAK		
		II		ALL			ZZ		FR	US				Y	JAK		

ZZ files a suppression for all connections between the US and KR and the US and FR

- ZZ files a suppression for flights between the US and KR when connecting in EUR
 - Suppression pushes connections over Pacific routings instead of Atlantic routings
- ZZ files a suppression for flights between the US and FR when connecting via JAK (Japan/Korea)
 - Connections could be built via other Pacific points or over Atlantic routings
- ZZ files the suppression using Indicator A which suppresses both online and interline connections

ZZ LAX-CDG GG CDG-ICN Interline connection does not build via CDG

ZZ LAX-FRA ZZ FRA-ICN Online connection does not build via FRA

ZZ ORD-NRT YY NRT-CDG Interline connection does not build via NRT

ZZ ORD-ICN KK ICN-CDG Interline connection does not build via ICN

ZZ SEA-PEK CH PEK-CDG Interline connection may build as not restricted by MCT suppression

Example 21: How do I use (Next/Previous) station, state, country or region?

Region Levels: Restricting circuitous routings

A. New MCT using new fields:

CONNECTION	TIME	ARR CARRIER			DEPARTURE CARRIER			STATION		STATE	
STATUS	HHMM	Carrier	Codeshare Indicator	Codeshare Operating	Carrier	Codeshare Indicator	Codeshare Operating	Prev	Next	Prev	Next
DD		DL			ALL					GA	FL
DD		DL			ALL					GA	FL
DD		DL			ALL					FL	UT
DD		DL			ALL			MSY			TX

	SUPPRESSIONS				DATE	
	Suppression Indicator (Y/N)	Region	Country	State	Effective From	Effective From
	Y			NY		
	Y			MA		
	Y			NY	01JUN18	30JUN18
	Y					

- DL files geographic suppressions to restrict circuitous routings
 - DL files to restrict connections between Georgia and Florida from building when the connection is in New York or Massachusetts
 - DL files to restrict connections between Florida and Utah from building when the connection is in New York but only during the month of June 2018
 - DL files to restrict all interline connections between MSY and the state of Texas

DL ATL-JFK	DL JFK-MCO	Schedule does not build due to connection in NY
DL ATL-BOS	DL BOS-DAB	Schedule does not build due to connection in MA
DL SAV-ATL	DL ATL-MIA	Schedule may build due to connection not restricted in GA
DL MCO-JFK	DL JFK-SLC	Schedule may build except during the month of June 2018
DL MSY-ATL	DL ATL-SAT	Online connections are permitted
DL MSY-ATL	AA ATL-DFW	Interline Connections are suppressed

Example 22: File Global Suppression for Codeshare except at a Specific Station

A. New MCT using new fields:

MCT#	STATION		CONNECTION	TIME	ARR CARRIER			DEPARTURE CARRIER			SUPPRESSIONS			
	ARR	DEPT	STATUS	HHMM	Carrier	Codeshare Indicator	Codeshare Operating	Carrier	Codeshare Indicator	Codeshare Operating	Suppression Indicator (Y/N)	Region	Country	State
1			II		AA	Y		AA	Y		Y			
2	JFK	JFK	II	0200	AA	Y		AA	Y		N			

To suppress connections AA marketing onto AA Marketing, globally, but permitting in DFW.

The following flights are available:

- | | | | | |
|----|-----------------|---------|------|------|
| 1. | AA6134 (BA113) | LHR-JFK | 1615 | 1915 |
| 2. | AA8905 (CX865) | JFK-YVR | 2150 | 0050 |
| 3. | AA8645 (IB6251) | MAD-JFK | 1210 | 1420 |
| 4. | AA8962 (CX865) | JFK-YVR | 2150 | 0050 |
| 5. | AA6128 (BA49) | LHR-SEA | 1525 | 1710 |
| 6. | AA7501 (AS2508) | SEA-YVR | 2310 | 2357 |

The following itineraries will build:

- Segments 1 and 2 with MCT 2
- Segments 3 and 4 with MCT 2

The following itineraries will *not* build:

- Segments 5 and 6 because of MCT 1

Because carrier AA has filed a global codeshare to codeshare suppression, carrier AA has to file a MCT exception at the stations where carrier AA wants to allow codeshare to codeshare connections.

Example 23: How do I file a time exception? Basic time xxxx (it is hours and minutes now)

A. New MCT using new fields:

ACTION INDICATOR	STATION		CONNECTION	TIME	ARR CARRIER			ARR FLIGHT #		DEPARTURE CARRIER		
(A/D)	ARR	DEPT	STATUS	HHMM	Carrier	Codeshare Indicator	Codeshare Operating	Range Start	Range End	Carrier	Codeshare Indicator	Codeshare Operating
A	ANU	ANU	DI	0115						VS		
A	ANU	ANU	ID	0115	VS							
A	ANU	ANU	II	0100						VS		

Files exception to the standard IATA's at ANU airport

The following flights are available

1. LGWANU VS033 1000 1345
2. ANUBGI LI565 1450 1615
3. ANUBGI LI521 1500 1625

The following flight will build

Segments 1 and 3 as built for 1 Hour and 15minutes ID

Example 24: How do I file MCT suppression?

Basis – Carrier to carrier

Emphasis on Y Indicator vs. 999/19:59 Time
 Station Exception (not set up to transfer passengers)

A. Current MCT:

AIRPORT			MCT	CARRIER	
Arr	Dpt	Con		Arr	Dpt
Apt	Apt	Typ		Car	Car
LNK	LNK	DD	19:59	UA	UA

AIRPORT			MCT	CARRIER	
Arr	Dpt	Con		Arr	Dpt
Apt	Apt	Typ		Car	Car
LNK	LNK	DD	999	UA	UA

B. New MCT using new fields:

MCT #	STATION		CONNECTION	TIME	ARR CARRIER		DEPARTURE CARRIER				Suppressions			
	ARR	DEPT	STATUS	HHMM	Carrier	Codeshare Indicator	Codeshare Operating	Carrier	Codeshare Indicator	Codeshare Operating	Suppression Indicator (Y/N)	Region	Country	State
1	LNK	LNK	DD		UA			UA			Y			

Carrier wants to suppress UA to UA connections in Station

1. UA 4862 ORD-LNK 0857-1043
2. UA 4739 LNK-DEN 1255-1325

Following itinerary will not build:
 Segments 1 and 2 with MCT 1

Example 25: How do I file MCT suppression?

By Region

A. New MCT using new fields:

MCT #	STATION		CONNECT ION	TIME	ARR CARRIER			DEPARTURE CARRIER			REGION		Suppressions			
	ARR	DEPT	STATUS	HHMM	Carrier	Codeshare Indicator	Codeshare Operating	Carrier	Codeshare Indicator	Codeshare Operating	Prev	Next	Suppression Indicator (Y/N)	Region	Country	State
1	BCN	BCN	II		UA			VY				EUR	Y			
2	BCN	BCN	II		VY			UA			EUR		Y			
3	BCN	BCN	II	0045	UA			VY					N			
4	BCN	BCN	II	0045	VY			UA					N			

Carrier wants to suppress connections to Region-EUR while allowing connections outside specified Region.

1. VY 7845 TLV-BCN 0640-1020
2. VY 6109 FCO-BCN 0705-0855
3. VY 7460 AMS-BCN 0725-0940
4. UA 0121 BCN-EWR 1200-1445

Following itinerary will build:

Segments 1 and 4 with MCT 4

Following itineraries will not build:

- Segments 2 and 4 due to MCT 2
- Segments 3 and 4 due to MCT 2

**Example 26: How do I file MCT suppression? Basis – Carrier to carrier –
By Country**

A. New MCT using new fields:

MCT #	STATION		CONNECTION	TIME	ARR CARRIER			ARR FLIGHT #		DEPARTURE CARRIER		
	ARR	DEPT	STATUS	HHMM	Carrier	Codeshare Indicator	Codeshare Operating	Range Start	Range End	Carrier	Codeshare Indicator	Codeshare Operating
1	GUM	GUM	II		UA			0190	0193	UA		
2	GUM	GUM	II	0030	UA					UA		

	DEPARTURE FLIGHT #		COUNTRY		REGION		Suppressions			
	Range Start	Range End	Prev	Next	Prev	Next	Suppression Indicator (Y/N)	Region	Country	State
				US			Y			
							N			

1. UA 0193 MNL-GUM 2145-0350
2. UA 0184 MNL-GUM 2330-0530
3. UA 0174 GUM-SPN 0700-0745
4. UA 0200 GUM-HNL 0640-1800

Carrier wants to suppress connection from Flight Range 0190-0193 to the country of United States.

Following itinerary will build:

- Segments 1 and 3 with MCT 2
- Segments 2 and 3 with MCT 2
- Segments 2 and 4 with MCT 2

Following itineraries will not build:

- Segments 1 and 4 due to MCT 1

Example 27: How do I file MCT suppression?

Basis – Carrier to carrier – by State

A. New MCT using new fields:

MCT #	STATION		CONNECTION	TIME	ARR CARRIER			DEPARTURE CARRIER		
	ARR	DEPT	STATUS	HHMM	Carrier	Codeshare Indicator	Codeshare Operating	Carrier	Codeshare Indicator	Codeshare Operating
1	MCO	MCO	DD		UA			UA		
2	MCO	MCO	DD		UA			UA		

	STATE		COUNTRY		Suppressions			
	Prev	Next	Prev	Next	Suppression Indicator (Y/N)	Region	Country	State
	NJ	IL	US	US	Y			
	IL	NJ	US	US	Y			

Carrier wants to suppress State to State connections.

1. UA 1939 EWR-MCO 0730-1005
2. UA 0633 MCO-ORD 1110-1300
3. UA 0654 ORD-MCO 0610-0950
4. UA 0371 MCO-EWR 1040-1325

Following itineraries will not build:

- Segments 1 and 2 due to MCT 1
- Segments 3 and 4 due to MCT 2

Example 28:

How can I use suppression on a global scale?

Codeshare

A. New MCT using new fields:

MCT #	STATION		CONNECTION	TIME	ARR CARRIER			DEPARTURE CARRIER			Suppressions			
	ARR	DEPT	STATUS	HHMM	Carrier	Codeshare Indicator	Codeshare Operating	Carrier	Codeshare Indicator	Codeshare Operating	Suppression Indicator (Y/N)	Region	Country	State
1			DD					UA	Y	EI	Y			
2			DD		UA	Y	EI				Y			
3			DI					UA	Y	EI	Y			
4			DI		UA	Y	EI				Y			
5			ID					UA	Y	EI	Y			
6			ID		UA	Y	EI				Y			
7			II					UA	Y	EI	Y			
8			II		UA	Y	EI				Y			
9	BOS	BOS	DI	0100	UA			UA	Y	EI	N			

1. UA 0532 ORD-BOS 1126-1441
2. AA 1530 ORD-BOS 1319-1640
3. UA 7636 BOS-DUB 1745-0455 (DEI50 = EI0136)
4. LH 0977 DUB-FRA 0910-1205

Following itinerary will build:

Segments 1 and 3 with MCT 9

Following itineraries will not build:

Segments 2 and 3 due to Global Suppression MCT 3

Segments 3 and 4 due to Global Suppression MCT 8

Example 29: How do I use (Next/Previous) station, state, country or region?

Station - Country

A. New MCT using new fields:

MCT #	STATION		CONNECTION	TIME	ARR CARRIER			DEPARTURE CARRIER			STATION	
	ARR	DEPT	STATUS	HHMM	Carrier	Codeshare Indicator	Codeshare Operating	Carrier	Codeshare Indicator	Codeshare Operating	Prev	Next
1	GUM	GUM	II	0200	UA			UA			SPN	
2	GUM	GUM	II	0030	UA			UA				

COUNTRY	Suppressions					
	Prev	Next	Suppression Indicator (Y/N)	Region	Country	State
		PH	N			
			N			

1. UA 6398 SPN-GUM 1625-1715
2. UA 6400 SPN-GUM 1755-1845
3. UA 0183 GUM-MNL 1920-2110
4. UA 0196 GUM-NRT 1930-2120

Following itinerary will build:

- Segments 1 and 3 with MCT 1
- Segments 1 and 4 with MCT 2
- Segments 2 and 4 with MCT 2

Following itineraries will not build:

- Segments 2 and 3 due to MCT 1
- UA flights from SPN to the Philippines require 2 hours.

Example 30: How do I use (Next/Previous) station, state, country or region?

Station - Country

A. New MCT using new fields:

STATION		CONNECT ION	TIME	ARR CARRIER			ARR FLIGHT #		DEPARTURE CARRIER			DEPART FLIGHT #	
ARR	DEPT	STATUS	HHMM	Carrier	Codeshare Indicator	Codeshare Operating	Range Start	Range End	Carrier	Codeshare Indicator	Codeshare Operating	Range Start	Range End
MAN	MAN	ID	0130	VS	Y				VS	Y			
MAN	MAN	DI	0130	VS	Y				VS	Y			
MAN	MAN	II	0130	VS	Y				VS	Y			

	TERMINAL		STATION		STATE		COUNTRY	
	Arrive	Depart	Prev	Next	Prev	Next	Prev	Next
							US	
								US
							US	US

Files exception to the standard IATA's in MAN for VS and VS* from international flights in the USA

The following flights are available

- 1 VS 076 MCO MAN 1830 0735
- 2 BA1387 MAN LHR 0840 0950
- 3 BA1389 MAN LHR 0945 1055

The following itineraries will build:

Segments 1 & 3

They build because the connection is coming from the US

Example 31:

How do I use (Next/Previous) station, state, country or region?

Station – Country

A. New MCT using new fields:

MCT #	STATION		CONNECTION	TIME	ARR CARRIER			DEPARTURE CARRIER		
	ARR	DEPT	STATUS	HHMM	Carrier	Codeshare Indicator	Codeshare Operating	Carrier	Codeshare Indicator	Codeshare Operating
1	GUM	GUM	II	0200	UA			UA		
2	GUM	GUM	II	0030	UA			UA		

	STATION		COUNTRY		Suppressions			
	Prev	Next	Prev	Next	Suppression Indicator (Y/N)	Region	Country	State
		NRT	FM		N			
					N			

1. UA 0186 YAP-GUM 0155-0325
2. UA 0188 TKK-GUM 0355-0535
3. UA 6394 SPN-GUM 0430-0515
4. UA 0828 GUM-NRT 0700-0955

Following itineraries will build:

- Segments 1 and 4 with MCT 1
- Segments 3 and 4 with MCT 2

Following itinerary will not build:

- Segment 2 and 4 due to MCT 1

UA flights from Federated States of Micronesia to NRT require 2 hours.

Example 32: How do I file a flight specific (1 flight) MCT?

A. New MCT using new fields:

MCT #	STATION		CONNECTION	TIME	ARR CARRIER			ARR FLIGHT #		DEPARTURE CARRIER		
	ARR	DEPT	STATUS	HHMM	Carrier	Codeshare Indicator	Codeshare Operating	Range Start	Range End	Carrier	Codeshare Indicator	Codeshare Operating
1	LAX	LAX	ID	0130	UA			5210	5210	UA		
2	LAX	LAX	ID	0110	UA					UA		

DEPARTURE FLIGHT #		Suppressions			
Range Start	Range End	Suppression Indicator (Y/N)	Region	Country	State
		N			
		N			

1. UA 5210 BJX-LAX 0700-0850
2. UA 0708 LAX-SFO 1000-1133
3. UA 1845 LAX-SFO 1124-1257

Following itinerary will build:

Segments 1 and 3 with MCT 1 or 2

Following itinerary will not build:

Segment 1 and 2 due to MCT 1

UA5210 requires 01:30

Example 33: How do I file a flight range and sub-set flight range?

Your airline should first review how to default to your codeshare operating carrier. Then, if you need to still file a flight range you need to be aware overlapping duplicates are not allowed

A. New MCT using new fields:

MCT #	STATION		CONNECTION	TIME	ARR CARRIER			ARR FLIGHT #		DEPARTURE CARRIER		
	ARR	DEPT	STATUS	HHMM	Carrier	Codeshare Indicator	Codeshare Operating	Range Start	Range End	Carrier	Codeshare Indicator	Codeshare Operating
1	IAD	IAD	ID	0145	UA	Y	LH	8717	8720	UA		
2	IAD	IAD	ID	0115	UA	Y	LH	8715	9614	UA		
3	IAD	IAD	ID	0145	UA	Y	LH	8713	8720	UA		

DEPARTURE FLIGHT #		Suppressions			
Range Start	Range End	Suppression Indicator (Y/N)	Region	Country	State
		N			
		N			
		N			

Carrier wants subset Flight Range of 8717-8720 to have a different MCT than the larger Flight Range

1. UA 8818 FRA-IAD 1030-1315 (DEI 50 = LH416)
2. UA 8827 FRA-IAD 1315-1600 (DEI 50 = LH418)
3. UA 4314 IAD-CLE 1435-1600
4. UA 4941 IAD-CLE 1724-1852

MCT 3 is not valid and will be rejected due to overlapping Flight Ranges of both MCT 1 and MCT 2

Following itineraries will build:

- Segments 1 and 4 with MCT 1
- Segments 2 and 4 with MCT 2

Following itinerary will not build:

- Segment 1 and 3 due to MCT 1

Example 34:

How can I use suppression on a global scale? Codeshare - I only want to connect with my own partner carriers?

A. New MCT using new fields:

STATION		CONNECTION	TIME	ARR CARRIER			DEPARTURE CARRIER		
ARR	DEPT	STATUS	HHMM	Carrier	Codeshare Indicator	Codeshare Operating	Carrier	Codeshare Indicator	Codeshare Operating
				VS					
							VS		
ATL	ATL	II	0125	VS	Y				
ATL	ATL	ID	0125	VS	Y				
ATL	ATL	DI	0040	VS	Y				
ATL	ATL	II	0125				VS	Y	
ATL	ATL	ID	0125				VS	Y	
ATL	ATL	DI	0040				VS	Y	

STATION		STATE		COUNTRY		SUPPRESSIONS				DATE	
Prev	Next	Prev	Next	Prev	Next	Suppression Indicator (Y/N)	Region	Country	State	Effective From	Effective To
						Y					
						Y					

This allows VS to suppress all connections in ATL except when connecting to VS or VS* flights

The following flights are available:

- VS0103 LHR-ATL (market) 1100 1530 (time)
- VS4832 ATL-JFK (market) 1705 1950 (time)
- B6720 ATL-JFK (market) 1825 2045 (time)

The following itineraries will build:

Segments 1 and 2 with MCT 4

The following itineraries will not build: (provide which segment will not build)

Segments 1 and 3 because of MCT 1 as the carrier suppression is on for ATL for all carrier exception VS and VS, including marketing codeshares

Because carrier VS has filed a global suppression to all airlines, VS has to file a MCT exception at the stations where it want to allow connections.

Example 35:

How do I use (Next/Previous) station, state, country or region?

Station – State

A. New MCT using new fields:

STATION		CONNECTION	TIME	ARR CARRIER			ARR FLIGHT #		DEPARTURE CARRIER		
ARR	DEPT	STATUS	HHMM	Carrier	Codeshare Indicator	Codeshare Operating	Range Start	Range End	Carrier	Codeshare Indicator	Codeshare Operating
LHR	LHR	ID	0200	VS	Y				VS	Y	
LHR	LHR	DI	0200	VS	Y				VS	Y	
LHR	LHR	II	0200	VS	Y				VS	Y	
LHR	LHR	ID	0100	VS	Y				VS	Y	
LHR	LHR	DI	0100	VS	Y				VS	Y	
LHR	LHR	II	0100	VS	Y				VS	Y	

DEPART FLIGHT #		TERMINAL		STATION		STATE		COUNTRY		REGION	
Range Start	Range End	Arrive	Depart	Prev	Next	Prev	Next	Prev	Next	Prev	Next
								NY			
									NY		
								NY	NY		

Files exception to the standard IATA's in LHR for VS and VS* from international flights in the NY State

- The following flights are available
- 1 VS0006 MIALHR 0600 2000
 - 2 VS0026 JFKLHR 0815 2010
 - 3 VS0300 LHRDEL 2150 1055

The following itineraries will build:

- Segments 2 & 3 will build
- Segments 1 & 3 will not build as it is not arriving from NY State

Example 36: How do I use (Next/Previous) station, state, country or region?

Station - Region

A. New MCT using new fields:

STATION		CONNECTION	TIME	ARR CARRIER			ARR FLIGHT #		DEPARTURE CARRIER		
ARR	DEPT	STATUS	HHMM	Carrier	Codeshare Indicator	Codeshare Operating	Range Start	Range End	Carrier	Codeshare Indicator	Codeshare Operating
MAN	MAN	ID	0130	VS	Y				VS	Y	
MAN	MAN	DI	0130	VS	Y				VS	Y	

DEPART FLIGHT #		TERMINAL		STATION		STATE		COUNTRY		REGION	
Range Start	Range End	Arrive	Depart	Prev	Next	Prev	Next	Prev	Next	Prev	Next
											CAR
											CAR

Files exception to the standard IATA's in MAN for VS* and VS* from international flights in the CAR

The following flights are available

1. VS*8481 SOUMAN 1035 1130
2. VS 0077 MANBGI 1300 1655
3. VS 0127 MANJFK 1305 1500

The following itineraries will build:

Segments 1 & 2 will build

Segments 1 & 3 will not build as it is not departing to CAR region

Example 37: How do I file MCT suppression for ALL Carriers?

New MCT using new fields:

Carrier wants to suppress ALL connections including themselves.

MCT #	STATION		CONNECTION	TIME	ARR CARRIER			DEPARTURE CARRIER			SUPPRESSIONS
	ARR	DEPT	STATUS	HHMM	Carrier	Codeshare Indicator	Codeshare Operating	Carrier	Codeshare Indicator	Codeshare Operating	Suppression Indicator (Y/N)
1	ABE	ABE	DD					UA	Y		Y
2	ABE	ABE	DD					UA			Y
3	ABE	ABE	DD		UA	Y					Y
4	ABE	ABE	DD		UA						Y
5	ABE	ABE	DD	0020							N

1. UA 8333 YUL-ABE 1515-1645 DEI50 = AC, DEI220 = ID
2. UA 4862 EWR-ABE 1515-1640
3. UA 3982 ABE-EWR 1730-1850
4. DL 4249 ABE-DTW 1735-1923
5. AA 5140 ABE-CLT 1859-2107

Following itineraries will not build:

- Segments 1 and 3 with MCT 3
- Segments 2 and 3 with MCT 4
- Segments 3 and 4 with MCT 2
- Segments 3 and 5 with MCT 2

Example 38: How do I file MCT suppression for ALL Carriers?

Station Exception with Existing MCT's

New MCT using new fields:

Carrier wants to suppress ALL connections including themselves,

Existing MCT's

STATION		CONNECTION	TIME	ARR CARRIER			DEPARTURE CARRIER			SUPPRESSIONS
ARR	DEPT	STATUS		Carrier	Codeshare Indicator	Codeshare Operating	Carrier	Codeshare Indicator	Codeshare Operating	Suppression Indicator (Y/N)
ABE	ABE	DD	30				AA			N
ABE	ABE	DD	30	AA						N
ABE	ABE	DD	20							

New Station Carrier Suppression

MCT #	STATION		CONNECTION	TIME	ARR CARRIER			DEPARTURE CARRIER			SUPPRESSIONS
	ARR	DEPT	STATUS	HHMM	Carrier	Codeshare Indicator	Codeshare Operating	Carrier	Codeshare Indicator	Codeshare Operating	Suppression Indicator (Y/N)
1	ABE	ABE	DD		UA	Y		AA			Y
2	ABE	ABE	DD		UA			AA			Y
3	ABE	ABE	DD	0030				AA			N
4	ABE	ABE	DD					UA	Y		Y
5	ABE	ABE	DD					UA			Y
6	ABE	ABE	DD	0030	AA						N
7	ABE	ABE	DD		UA	Y					Y
8	ABE	ABE	DD		UA						Y

1. UA 4862 EWR-ABE 1515-1640
2. UA 3982 ABE-ORD 1730-1850
3. DL 4249 ABE-DTW 1735-1923
4. AA 5140 ABE-CLT 1859-2107

Following itineraries will not build:

- Segments 1 and 2 with MCT 5
- Segments 1 and 3 with MCT 5
- Segments 1 and 4 with MCT 2

Example 39: How do I file MCT suppression for ALL Carriers?

By Region

New MCT using new fields:

Carrier wants to suppress ALL connections including themselves from Philippines to North America.

MCT #	STATION		CONNECTION	TIME	ARR CARRIER			DEPARTURE CARRIER			COUNTRY		REGION		SUPPRESSIONS
	ARR	DEPT	STATUS	HHMM	Carrier	Codeshare Indicator	Codeshare Operating	Carrier	Codeshare Indicator	Codeshare Operating	Prev	Next	Prev	Next	Suppression Indicator (Y/N)
1	GUM	GUM	II					UA			PH			NOA	Y
2	GUM	GUM	II					UA	Y		PH			NOA	Y
3	GUM	GUM	II	0115											N

1. UA 0184 MNL-GUM 2225-0425
2. PR 0110 MNL-GUM 2245-0445
3. UA 0200 GUM-HNL 0640-1800
4. UA 0828 GUM-NRT 0700-0955

Following itineraries will build:

- Segments 1 and 4 with MCT 3
- Segments 2 and 4 with MCT 3

Following itineraries will not build:

- Segments 1 and 3 with MCT 1
- Segments 2 and 3 with MCT 1

Example 40: How do I file MCT suppression for ALL Carriers?

By Country

New MCT using new fields:

Carrier wants to suppress ALL connections including themselves in Station for Country Mexico

MCT #	STATION		CONNECTION	TIME	ARR CARRIER			DEPARTURE CARRIER			COUNTRY		REGION		SUPPRESSIONS
	ARR	DEPT	STATUS	HHMM	Carrier	Codeshare Indicator	Codeshare Operating	Carrier	Codeshare Indicator	Codeshare Operating	Prev	Next	Prev	Next	Suppression Indicator (Y/N)
1	AUS	AUS	DI					UA	Y			MX			Y
2	AUS	AUS	DI					UA				MX			Y
3	AUS	AUS	DI		UA	Y						MX			Y
4	AUS	AUS	DI		UA							MX			Y
5	AUS	AUS	DI	0100											N

1. DL 2397 MSP-AUS 0730-1015
2. UA 4862 DEN-AUS 0800-1100
3. UA 1003 AUS-CUN 1200-1430
4. AM 2687 AUS-MEX 1350-1615

All itineraries will not build.

Example 41: How do I file MCT suppression for ALL Carriers?

By State

New MCT using new fields:

Carrier wants to suppress ALL connections including themselves in Station from District of Columbia to Texas

MCT #	STATION		CONNECTION	TIME	ARR CARRIER			DEPARTURE CARRIER			STATE		SUPPRESSIONS
	ARR	DEPT	STATUS	HHMM	Carrier	Codeshare Indicator	Codeshare Operating	Carrier	Codeshare Indicator	Codeshare Operating	Prev	Next	Suppression Indicator (Y/N)
1	MCO	MCO	DD					UA	Y		DC	TX	Y
2	MCO	MCO	DD					UA			DC	TX	Y
3	MCO	MCO	DD		UA	Y					DC	TX	Y
4	MCO	MCO	DD		UA						DC	TX	Y
5	MCO	MCO	DD	0055									N

1. F9 1623 IAD-MCO 0600 0820
2. B6 1223 DCA-MCO 0805-1030
3. UA 0778 IAD-MCO 0855-1110
4. UA 1230 MCO-IAH 1210-1340
5. NK 0713 MCO-IAH 1225-1406

All itineraries will not build.

Example 42: How do I file a time exception?

19:59/999 will no longer suppress connections from being build and will be rejected. (When filing MCT Suppressions, the time is no longer required; the field must be blank)

A. New MCT using new fields:

MCT #	STATION		CONNECT ION	TIME	ARR CARRIER			DEPARTURE CARRIER			SUPPRESSIONS			
	ARR	DEPT	STATUS	HHMM	Carrier	Codeshare Indicator	Codeshare Operating	Carrier	Codeshare Indicator	Codeshare Operating	Suppression Indicator (Y/N)	Region	Country	State
1			ID		AA						Y		CU	
2			II		AA						Y		CU	
3			DI					AA			Y		CU	
4			II					AA			Y		CU	

Time field no longer required (999/19:59 will no longer suppress connections from being build and will be rejected).