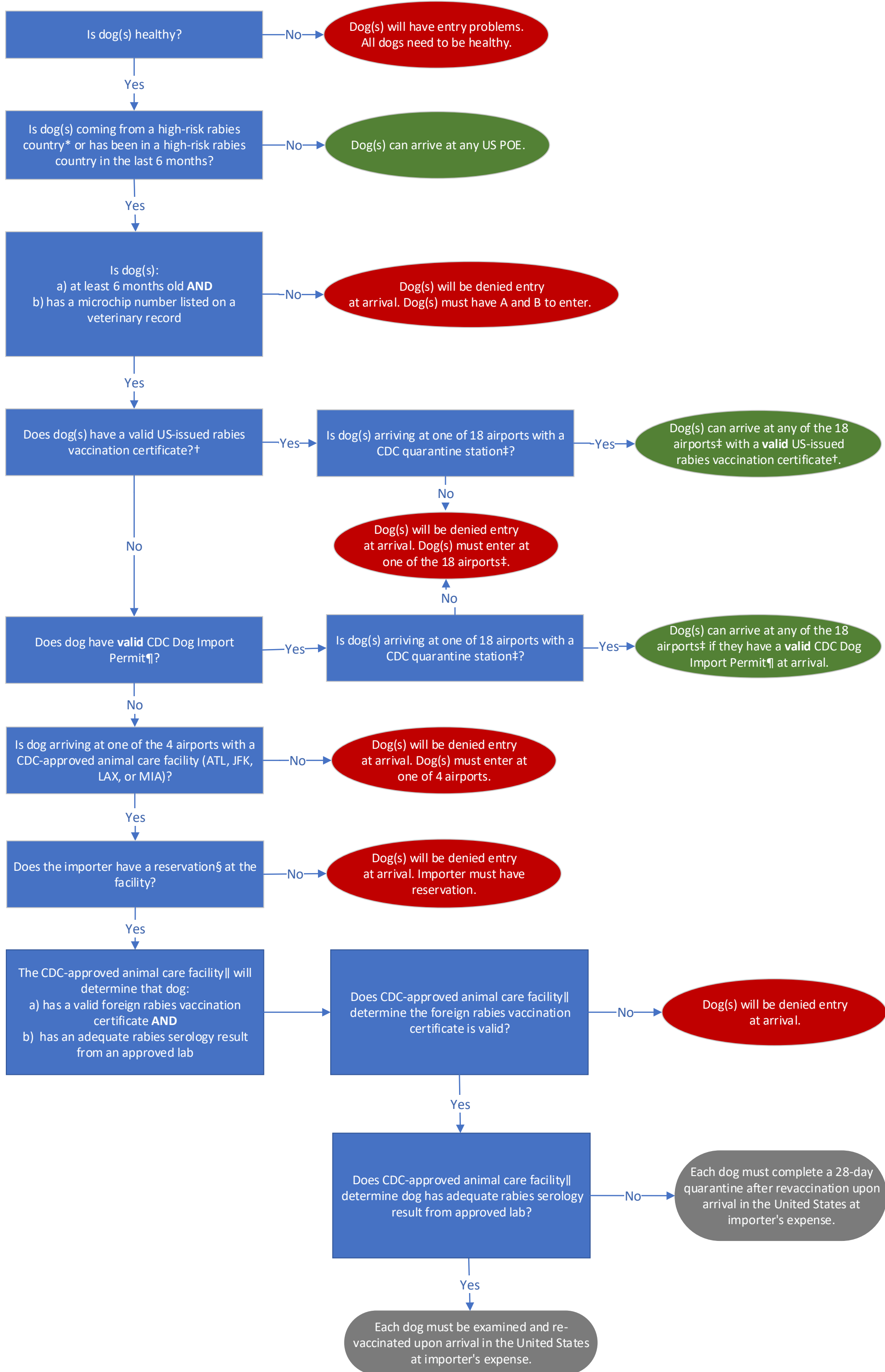


How to Respond to Dog Importation Questions from Passengers Booking Flights or At Departure: Process Map

Audience: Airline Staff
Purpose: To help airline staff determine if dogs will meet CDC entry requirements.

Updated May 23, 2022



*High-risk country list available here: www.cdc.gov/importation/bringing-an-animal-into-the-united-states/high-risk.html
 † This means dog was vaccinated in the U.S. with vaccine administered on or after 12 weeks of age and at least 28 days before arrival if it is the dog's initial vaccination. Booster rabies vaccines administered in the United States after 15 months of age are valid immediately. If vaccination is expired, vaccination certificate is NOT valid, and consider this answer "no" when reviewing the flowchart.
 ‡Anchorage (ANC), Atlanta (ATL), Boston (BOS), Chicago (ORD), Dallas (DFW), Detroit (DTW), Honolulu (HNL), Houston (IAH), Los Angeles (LAX), Miami (MIA), Minneapolis (MSP), New York (JFK), Newark (EWR), Philadelphia (PHL), San Francisco (SFO), San Juan (SJU), Seattle (SEA), and Washington DC (IAD).
 ¶ Importers must apply for a CDC Dog Import Permit at www.cdc.gov/dogpermit. Permit applications take 6 weeks to process.
 §The importer must have a reservation at a CDC-approved private quarantine facility before arrival, where the dog will:
 -Undergo veterinary exam to verify age, foreign rabies vaccination certificate, microchip number, and that the dog is healthy
 -Be re-vaccinated with a USDA-approved vaccine
 -Complete 28-day quarantine (if no valid foreign rabies vaccination certificate or serologic titer)
 || This is the CDC-approved animal care facility's responsibility. Airlines have no role in reviewing foreign rabies vaccination certificates or rabies serologic titers.