



Special Cargo Requirements – What's New

Maria Jitomirski,
Manager, Special Cargo
IATA



Setting standards for industry by the industry

IATA Airlines

**Live Animals &
Perishables
Board (LAPB)**
12 Airline members

Industry
Experts

LAPB Advisory
Group + Animal
Care Team
10 members

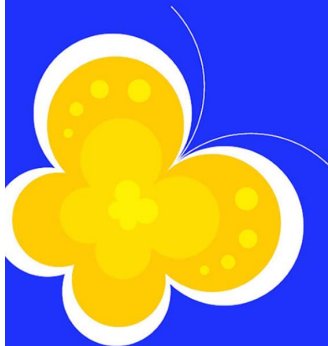
Perishable Cargo
Working Group
20 members

Healthcare Cargo
Working Group
20 members

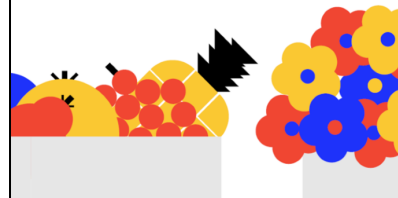
Join us to take part
in standard setting
activities.

Contact us at larper@iata.org

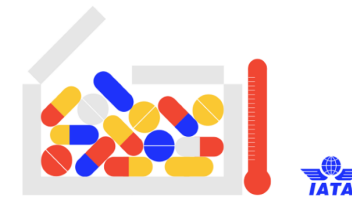
Live Animals
Regulations (LAR)



Perishable Cargo
Regulations (PCR)



Temperature Control
Regulations (TCR)



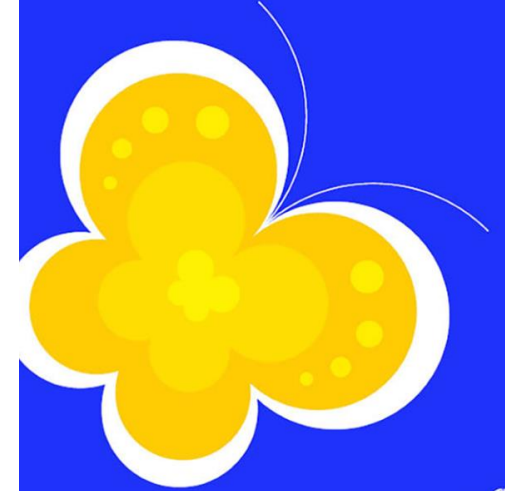
IATA Live Animals Regulations (LAR)

Established handling and transportation requirements for live animal shipments, such as domestic and laboratory animals, livestock and various protected and endangered species.

2026 Significant Changes:

- Improvement to illustrations in the Container Requirements
- Updates to various Container Requirements, such as:
 - ✓ **CR1** clarified ventilation requirements and absorbent bedding
 - ✓ **CR2** exceptions reworded for clarity, specific horse types replaced with weight criteria, enclosure details added, animals number limits removed
 - ✓ **CR19** maximum ventilation openings and density per bird added
 - ✓ **CR20** replaced method for feather protection
- **CR20A** new container requirements created for raptors and birds of prey that are hooded during transport
- Training Framework Enhancements: Standardization of training requirements and implementation of enhanced Live Animals Regulations training
- Updates and additions to species listing
- Amendments to State and Operator Variations

Live Animals
Regulations (LAR)



World Organisation
for Animal Health
Founded in 1924

CMS

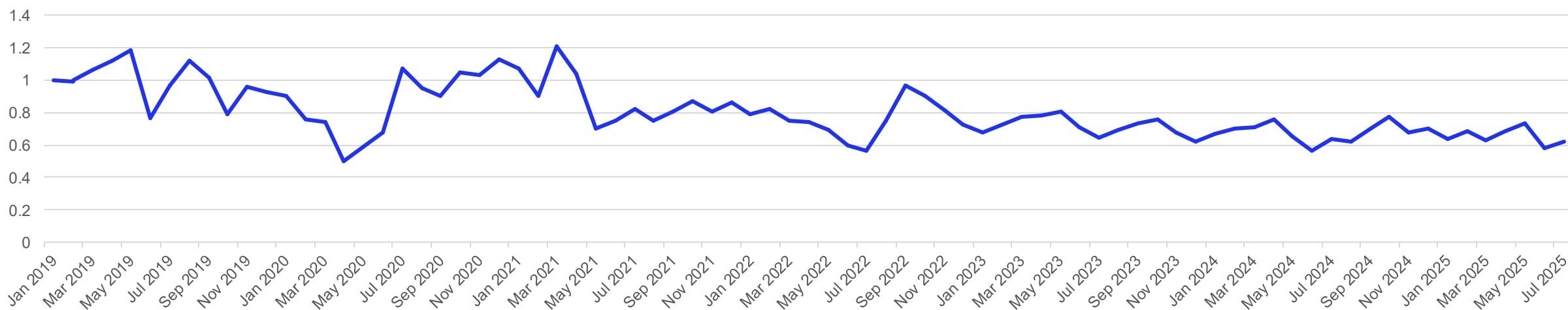
European Union

IATA

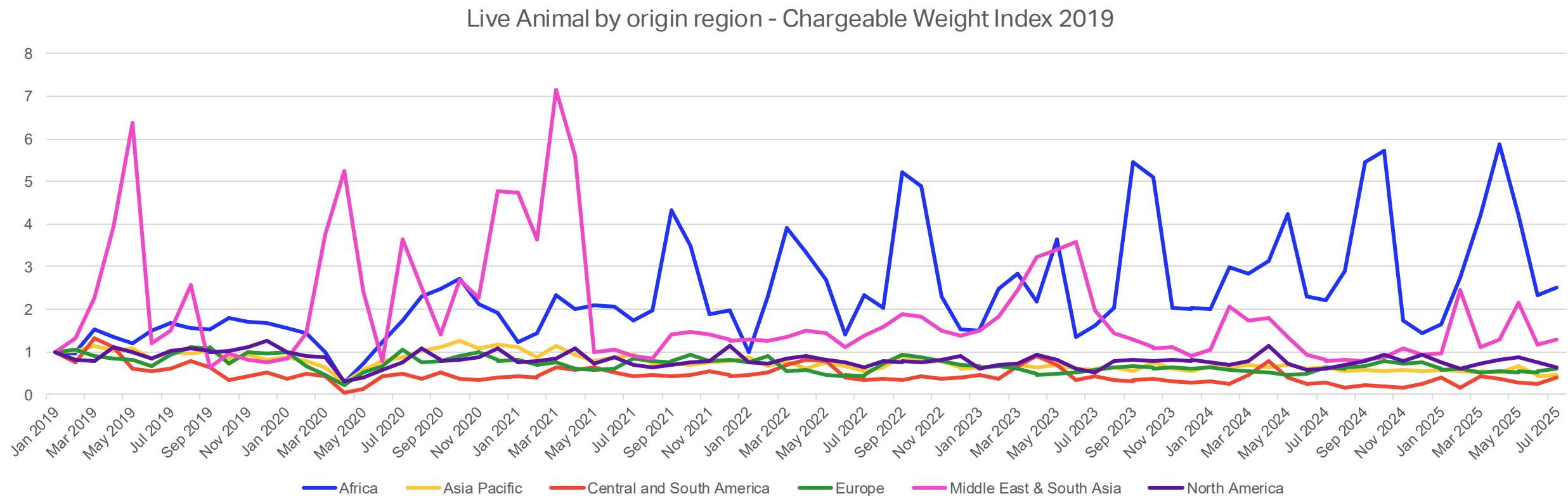
IATA

Live Animals Airfreight Demand

Live Animal - Chargeable Weight Index from Jan 2019 to Jul 2025



Live Animals Demand by Origin Region



Top 10 Country-to-Country Live Animal Flows in 2025 YTD

ORIGIN	DESTINATION	CHARGEABLE WEIGHT
Netherlands	United States	1,259,258.4
Belgium	United States	1,070,896.5
Norway	China	742,013.0
Zimbabwe	China	488,498.0
Pakistan	China	478,590.0
United States	Belgium	419,812.0
Germany	United States	389,434.0
Canada	Canada	363,248.0
Philippines	Philippines	362,960.0
Egypt	United Arab Emirates	347,973.0

Logistics Planning: High-volume routes require specialized handling, temperature control, and animal welfare protocols.

Trade Policy: These flows may be influenced by bilateral agreements, veterinary standards, and quarantine regulations.



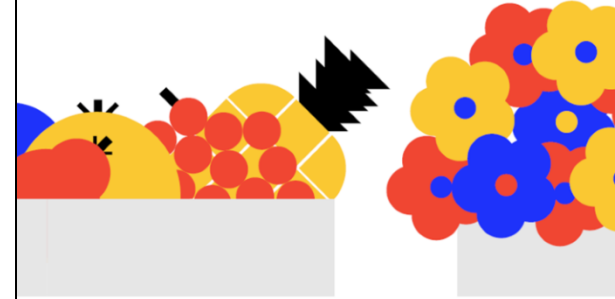
Perishable Cargo Regulations (PCR)

Has all the up-to-date, best-practice and guidance information you need to develop loss-minimizing perishable shipping processes.

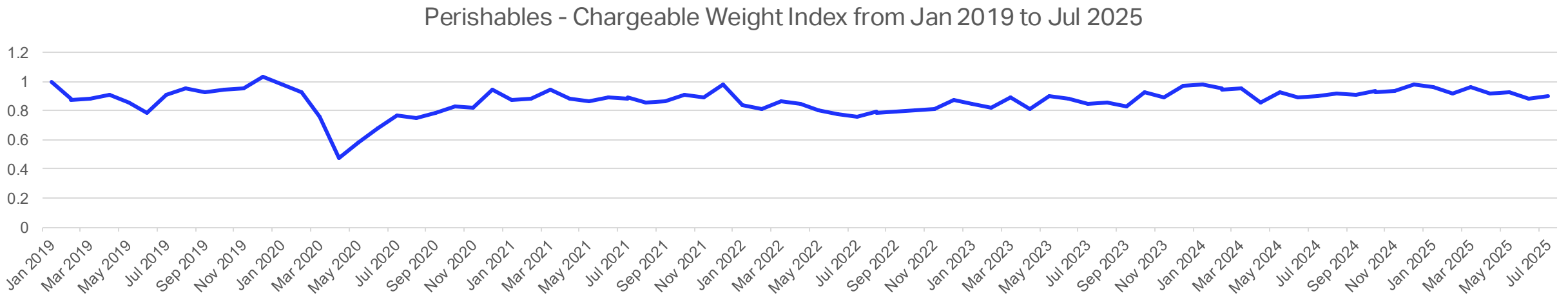
2026 Significant Changes

- Introduction of recommendations for CBTA training for all personnel involved in the handling of perishable cargo
- **Chapter 5 – Perishable Shipments** Addition of “Optional Special Handling Codes” summarizing commodity requirements to support more precise logistics coordination
- Comprehensive revision to the handling of Fruits and Vegetables, and Flowers, Tropical Flowers and Ornaments to streamline content
- Addition of sustainability considerations for packaging procurement, to encourage environmental responsibility
- Comprehensive revision of packing requirements, including updated guidance on the use of EPS, leak-proof packaging, and dry ice for live seafood shipments
- Amendments to State and Operator Variations

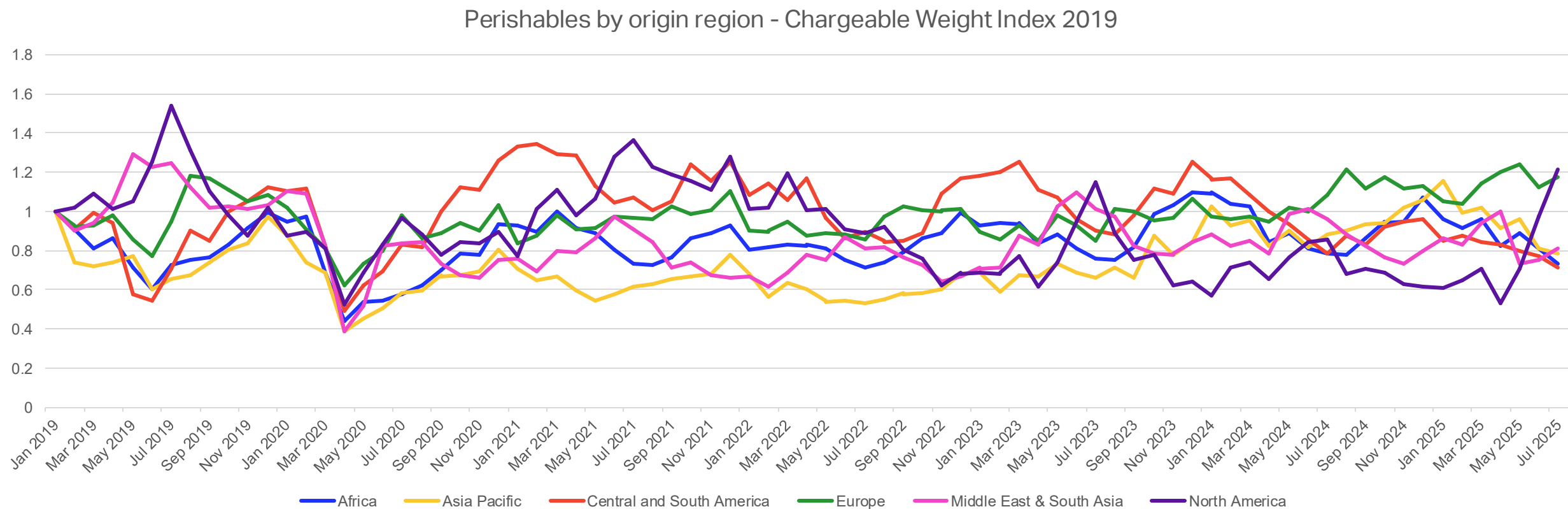
Perishable Cargo
Regulations (PCR)



Perishables Airfreight Demand



Perishables Demand by Origin Region



Top 10 Country-to-Country Perishable Flows 2025 YTD

ORIGIN	DESTINATION	CHARGEABLE WEIGHT
Philippines	Philippines	32,237,915.3
Kenya	Netherlands	23,174,807.5
Australia	Singapore	21,690,107.5
Ecuador	Netherlands	18,950,518.0
Netherlands	United States	15,614,417.3
United States	United States	15,388,964.8
United Kingdom	United States	15,129,165.7
India	United Arab Emirates	14,634,844.0
United States	Japan	12,574,452.1
India	United Kingdom	12,264,816.0

Cold chain infrastructure is critical for these flows.

Seasonality plays a big role i.e., mangoes from India, cherries from the U.S.

Logistics hubs like the Netherlands and Singapore amplify global reach.



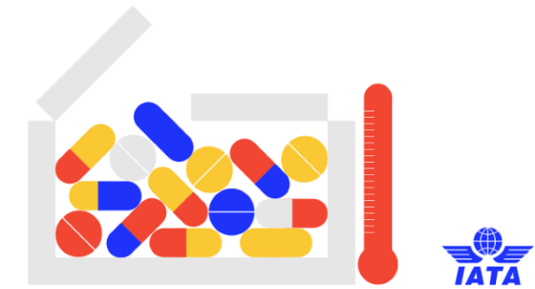
Temperature Control Regulations (TCR)

Contains information to ship compliant temperature-sensitive products: from packaging to documentation and labelling.

2026 Significant Changes

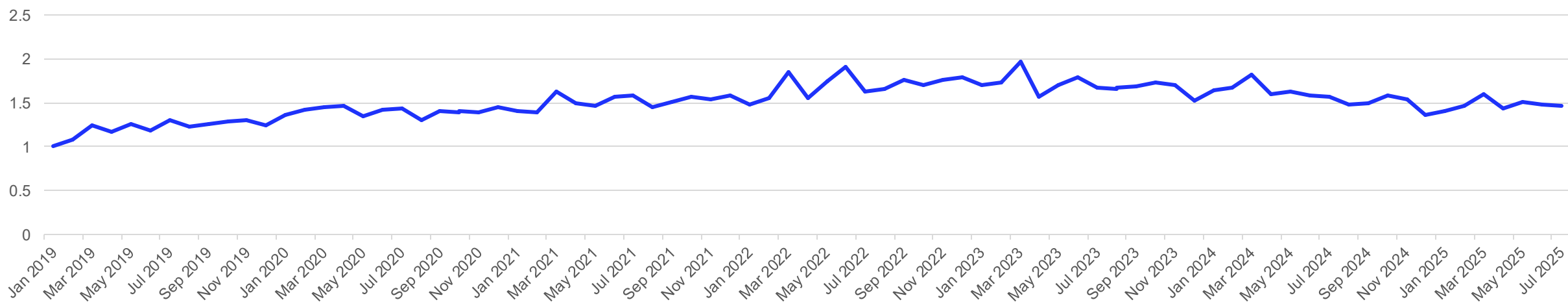
- Introduction of recommendation for CBTA training for all personnel involved in the handling of temperature-sensitive cargo
- **Chapter 4 – Planning and Booking** provides requirements on advances arrangements and booking procedures for temperature-sensitive shipments
- **Chapter 8 – Packing** corrections and updates on the use of Aircraft and Non-Aircraft temperature-controlled containers
- **Chapter 10 – Handling Procedures** sections on acceptance and storage have been revised to reflect best practices in temperature-controlled storage and handling procedures
- **Appendix D – CEIV Guidelines** updates to reflect the latest developments in the program
- Amendments to State and Operator Variations

Temperature Control
Regulations (TCR)

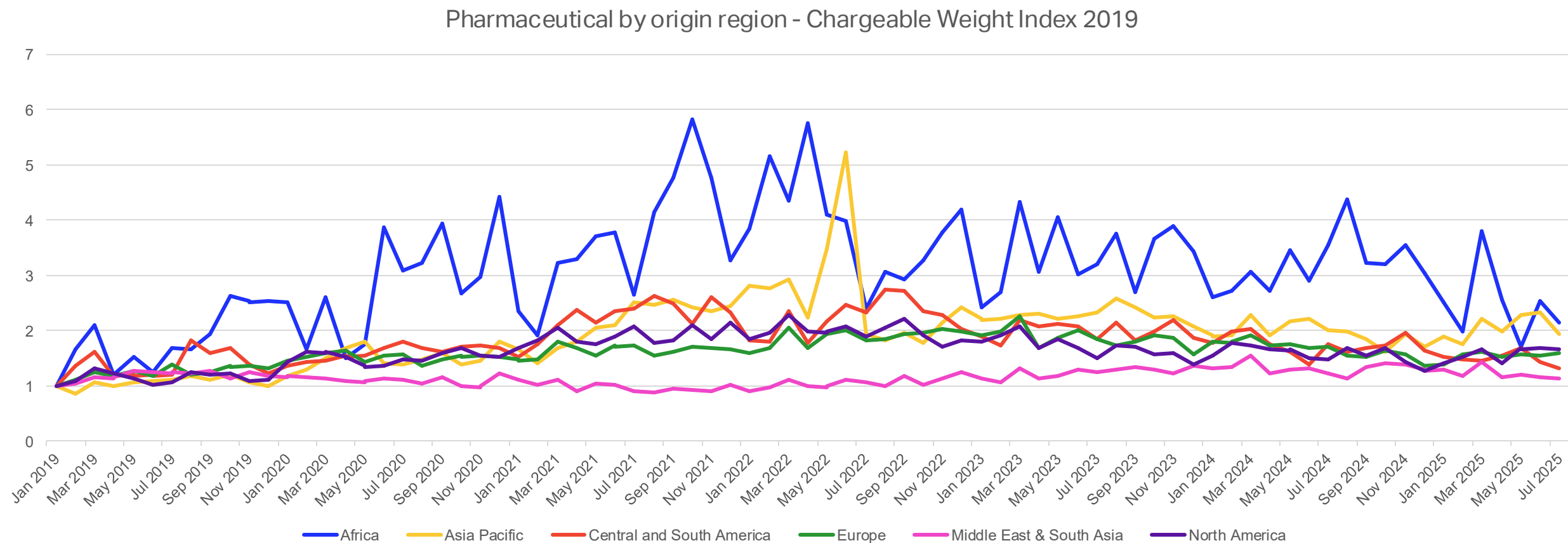


Pharmaceuticals Airfreight Demand

Pharmaceutical - Chargeable Weight Index from Jan 2019 to Jul 2025



Pharmaceuticals Demand by Origin Region



Top 10 Country-to-Country Pharma Flows in 2025 YTD

ORIGIN	DESTINATION	CHARGEABLE WEIGHT
India	United States	15,038,061.0
Germany	China	4,200,035.4
Germany	United States	3,258,948.9
United States	Japan	3,155,997.9
Switzerland	China	2,780,666.2
India	Germany	2,536,413.0
India	India	2,433,872.9
India	France	1,939,088.5
United States	India	1,819,945.8
India	Netherlands	1,776,734.0

Regulatory compatibility: Countries with aligned drug approval systems trade more easily.

Cost efficiency: Nations like India offer low-cost production, attracting buyers.

Health demographics: Aging populations (Japan, EU) need more chronic disease treatments.

Innovation hubs: Countries like Switzerland and Germany export cutting-edge therapies.



Special Cargo Roadmap

LIVE ANIMALS

PERISHABLES

PHARMA

Standardization

Sustainable Packaging

Advanced Therapy Logistics

Compliance

Stakeholder Engagement

POLL