



# What Does a “Connected” Aircraft Really Mean?

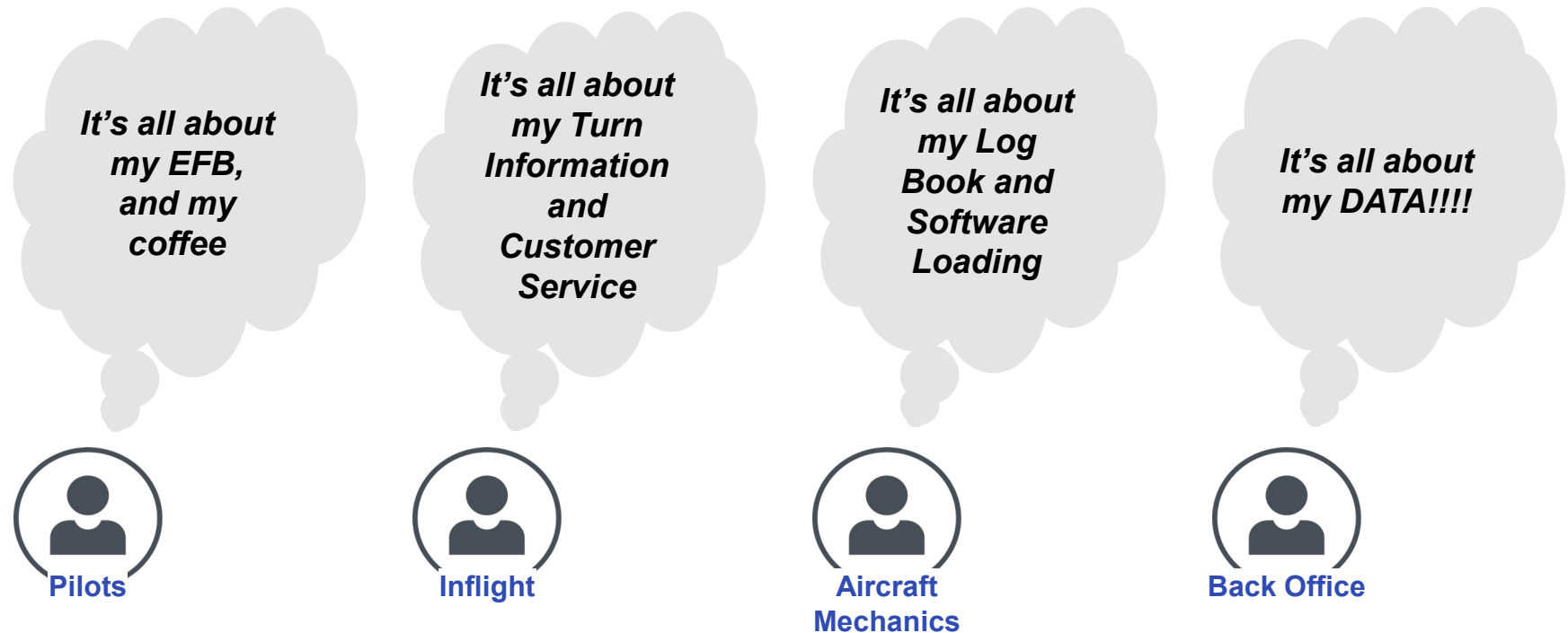
Todd Peterson

Program Manager Aircraft Connectivity, Southwest Airlines

# The Buzzword Bingo

B	I	N	G	O
e-Enabled	The Cloud	IoT	Third Party Apps	Big Data
VPN	LEO	ANSP	Azure	Edge Computing
4G	ANSOG	Free Space	Data Pools	GEO
AWS	Cyber Security	MEO	Real Time	5G
Block Chain	Firewalled	SaS	Node	Connected

# What does Connected mean to different groups



# Southwest's Opportunities Workshop Result



# So Many Asks, What Do We Do?



# Traditional Aviation Model

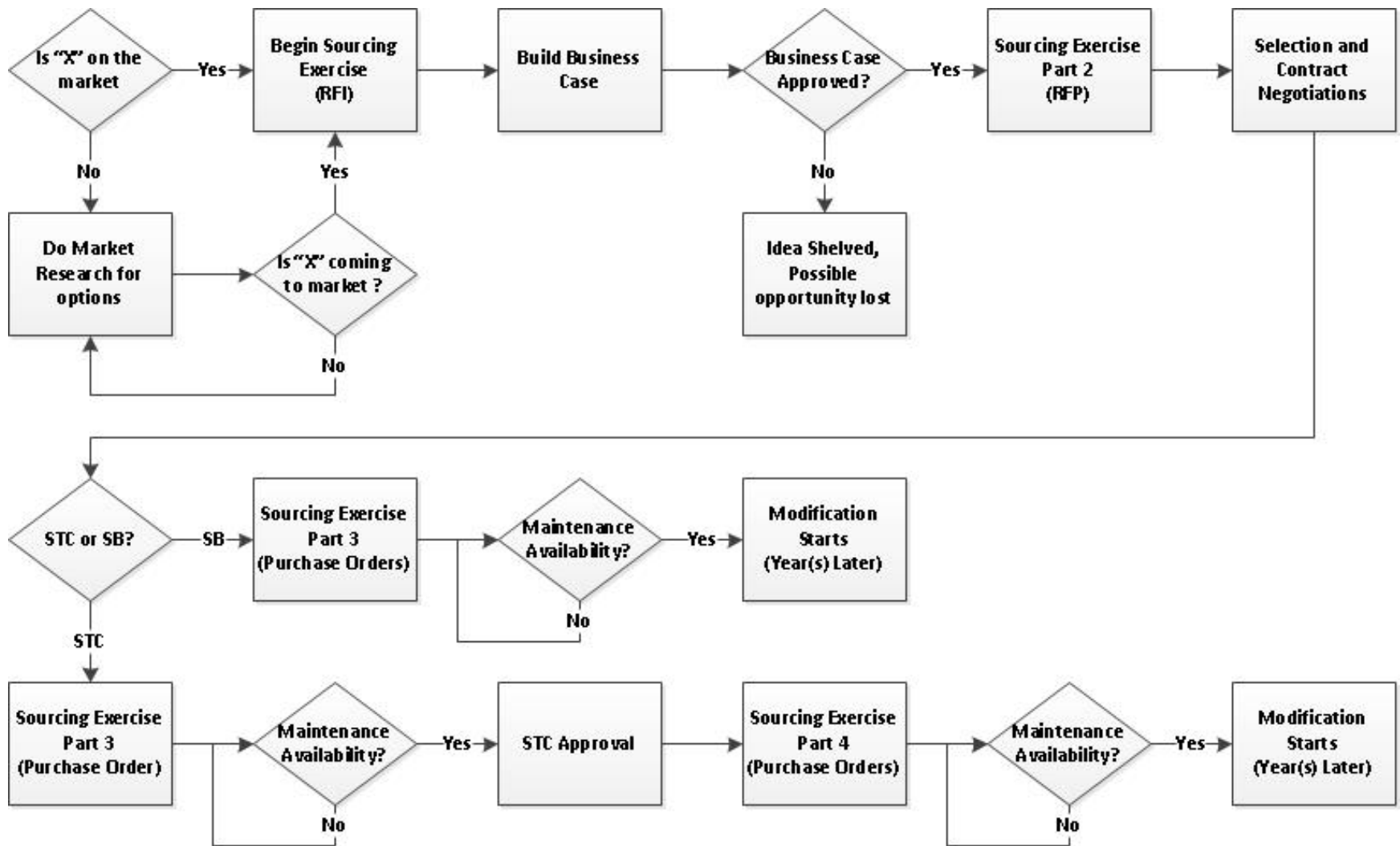


Ops Group/  
Marketing

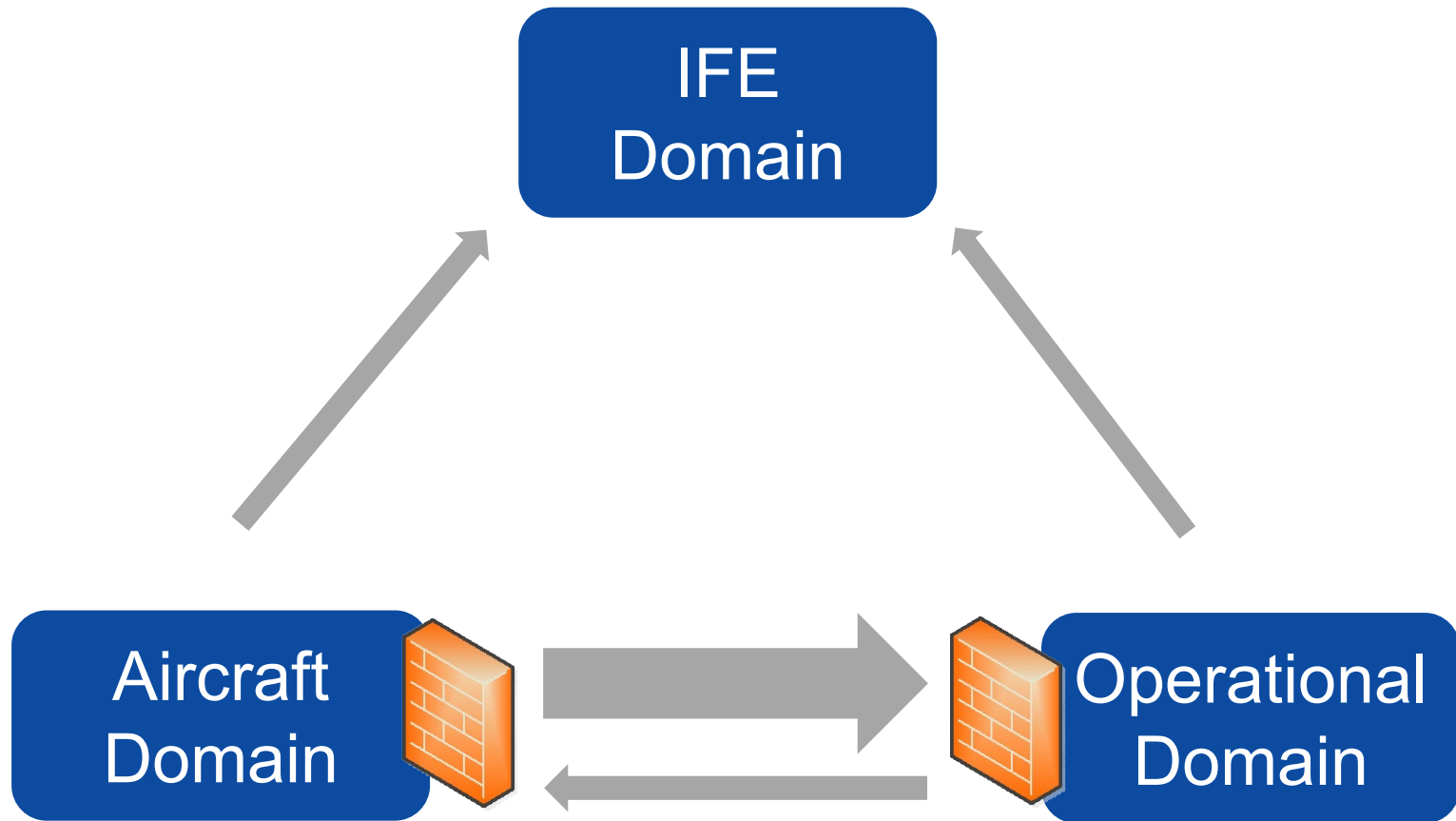


Tech Ops

# Traditional Aviation Model



# The “Connected” Domain Model

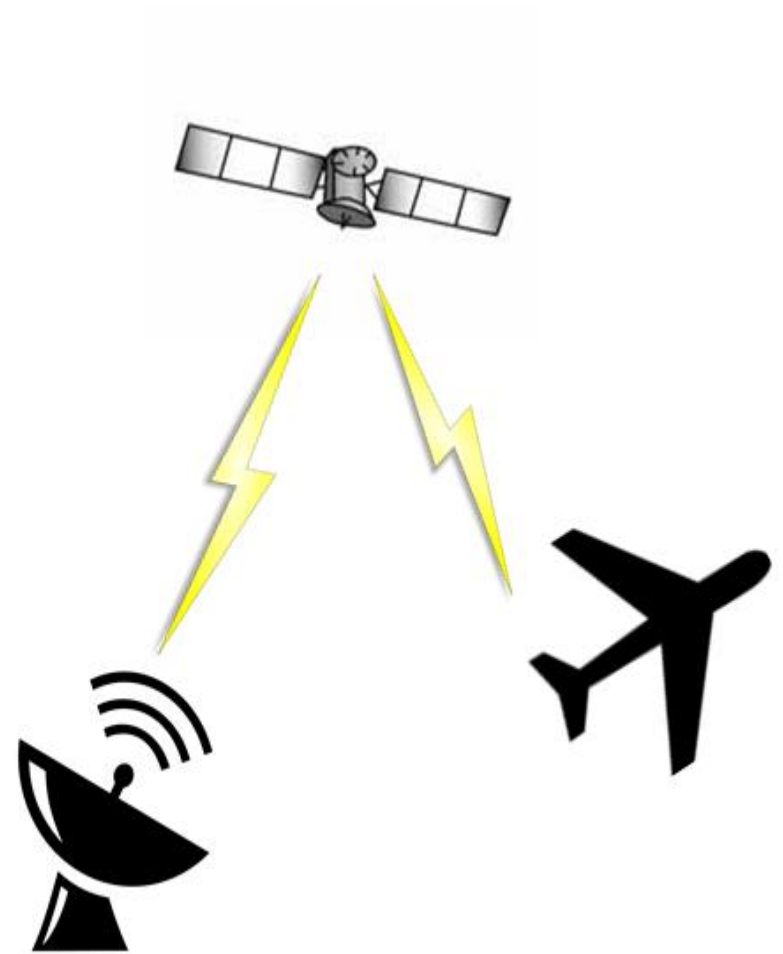




# The Aircraft Domain



# The IFE Domain

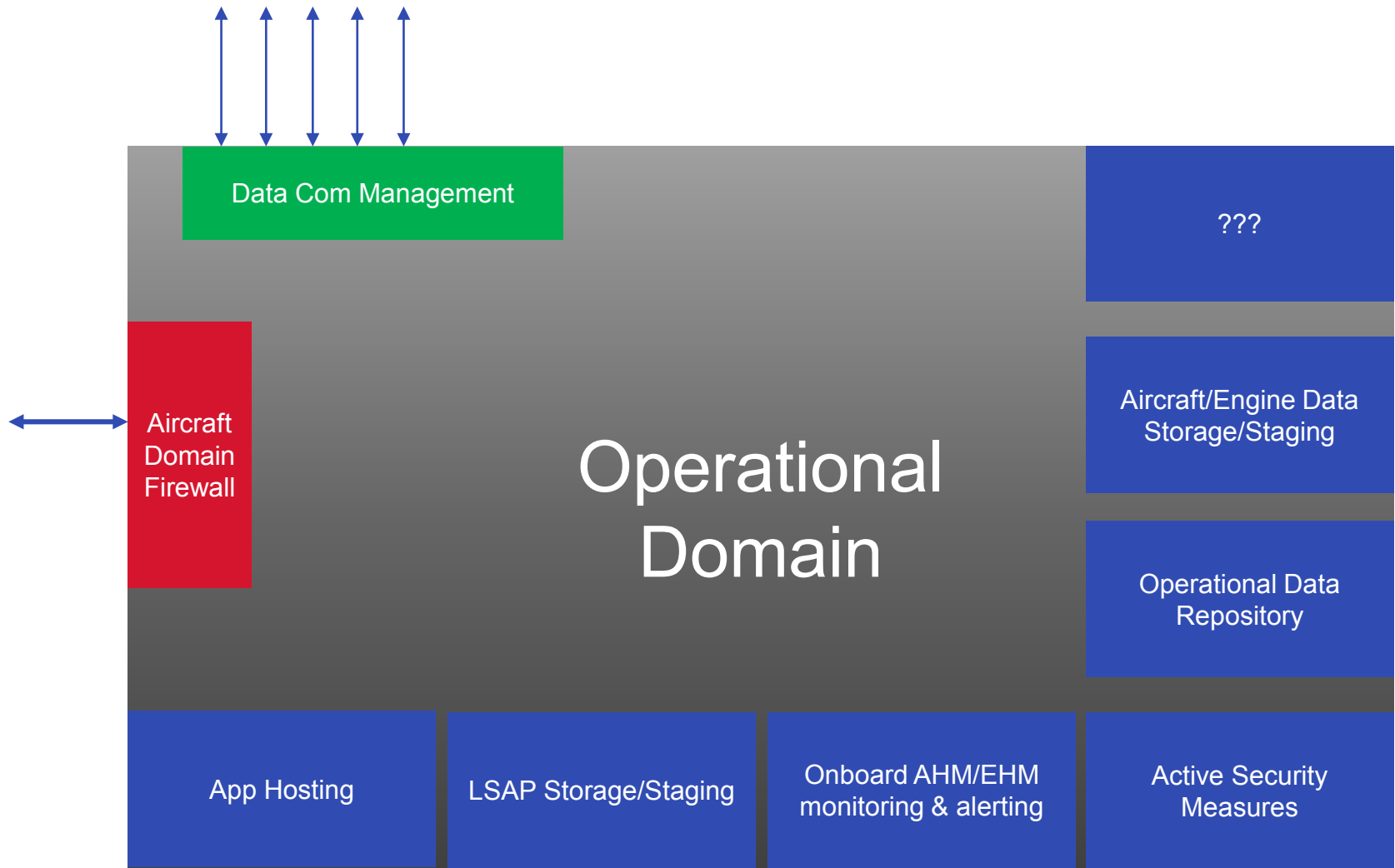




# The Current Operational Domain



# The Future Operational Domain



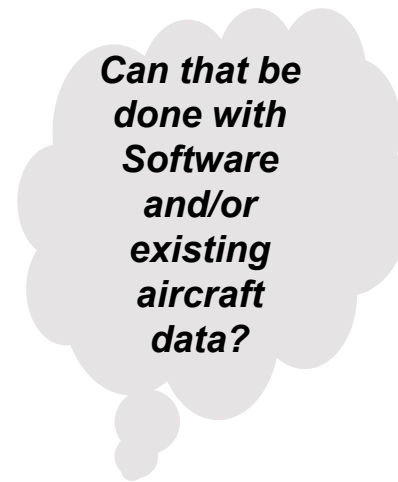
# “Connected” Domain Model



***I need the  
Aircraft to  
do X***



**Ops Group/  
Marketing**

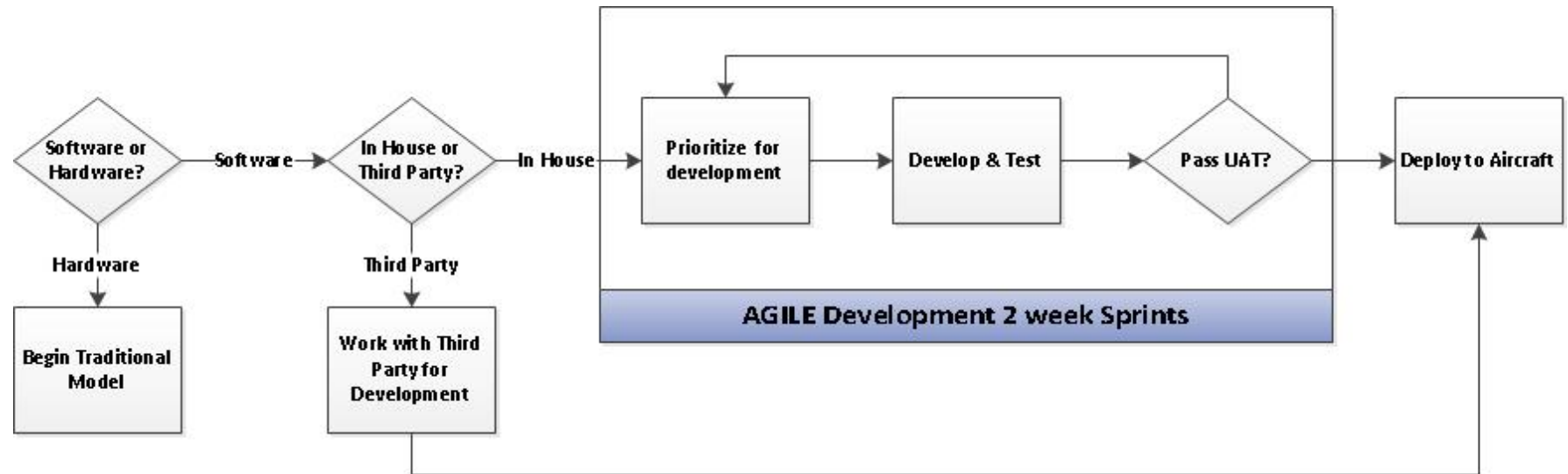


***Can that be  
done with  
Software  
and/or  
existing  
aircraft  
data?***

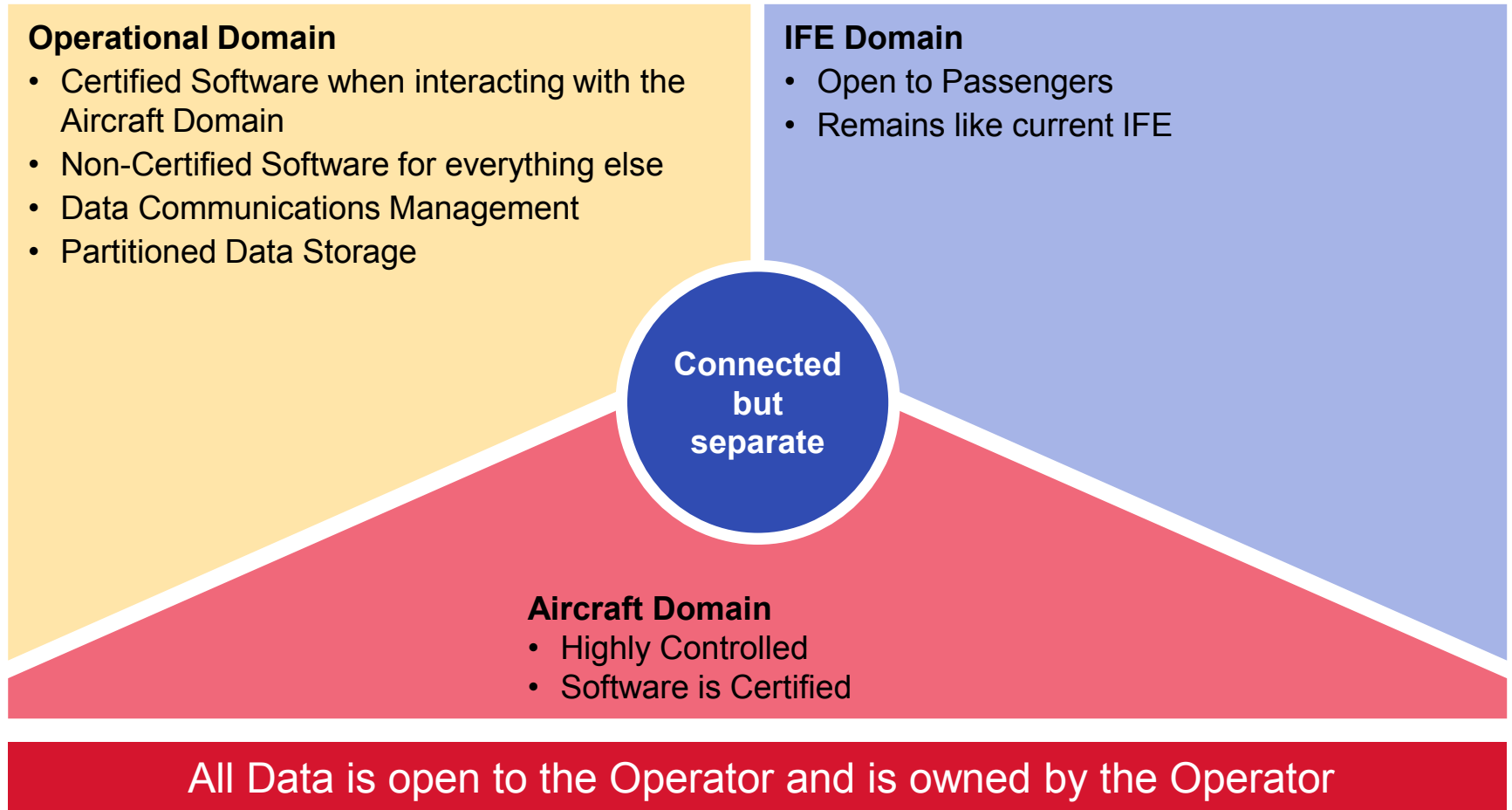


**Tech Ops**

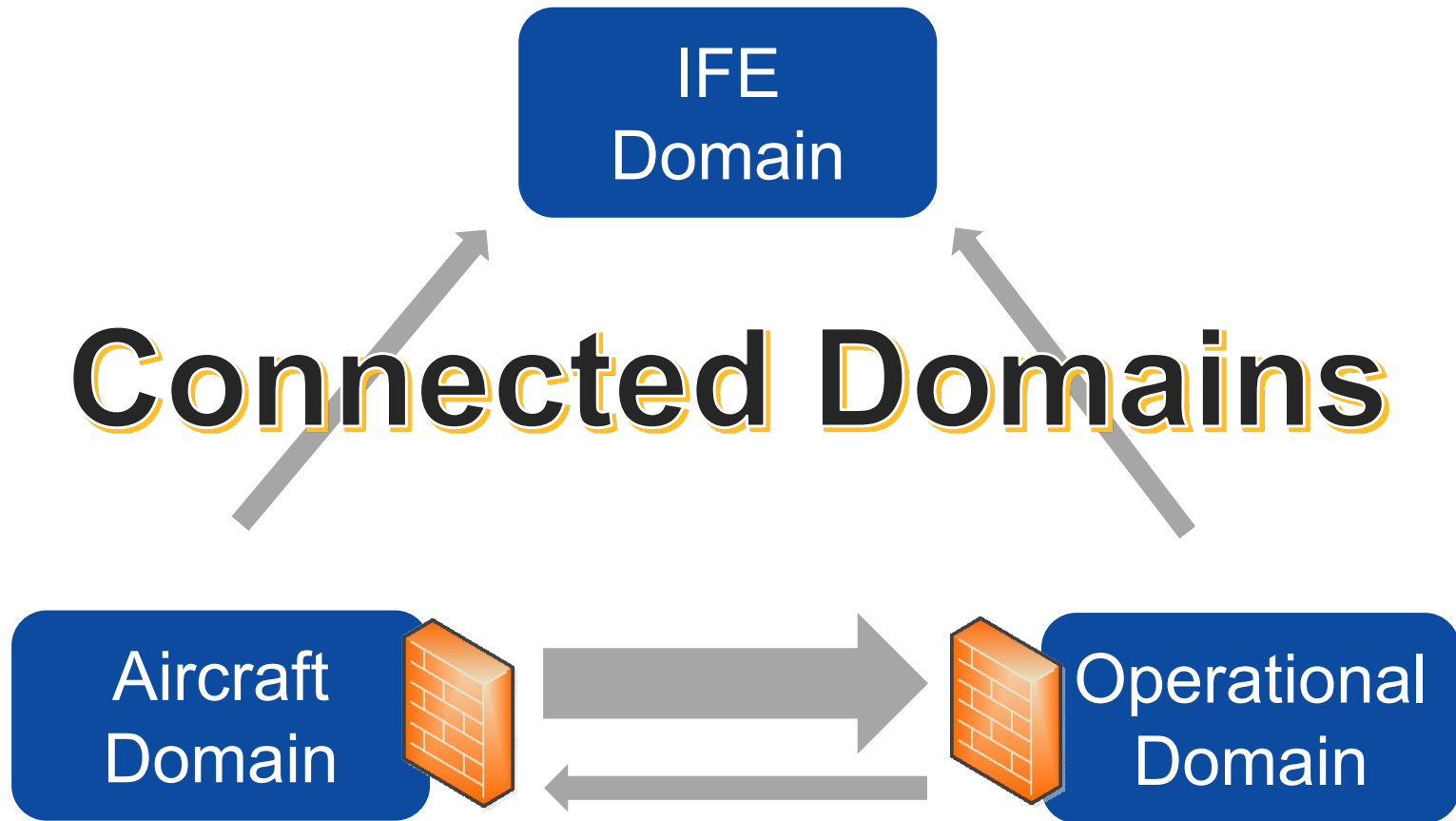
# “Connected” Domain Model



# Key Points of the “Connected” Domains



# What Does a “Connected” Aircraft Really Mean?





# Questions

