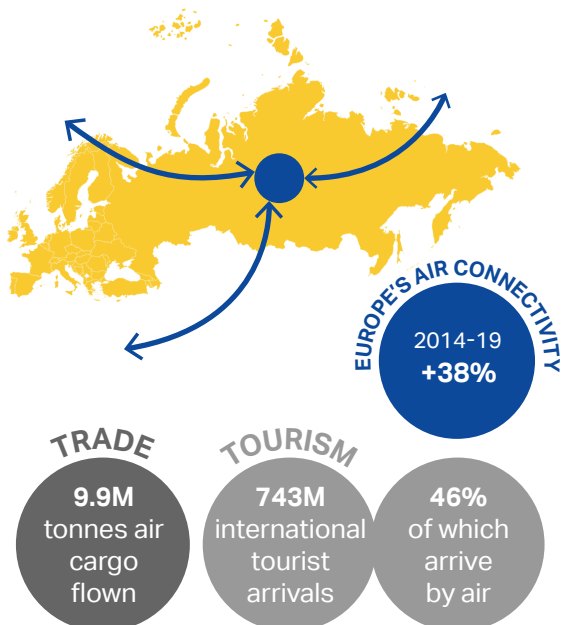


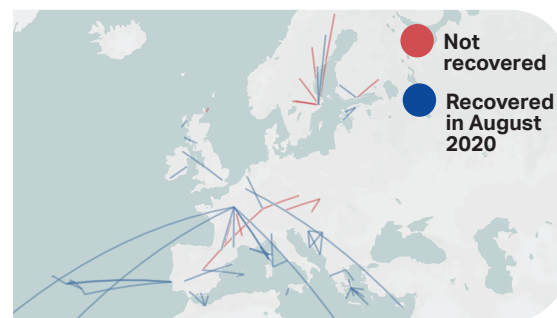
EUROPE AIR CONNECTIVITY

IATA'S AIR CONNECTIVITY INDEX measures how well connected a country's cities are to other cities around the world critical for trade, tourism and other economic flows.

See report titled "[Air Connectivity: Measuring the connections that drive economic growth](http://www.iata.org/economics)" (www.iata.org/economics)



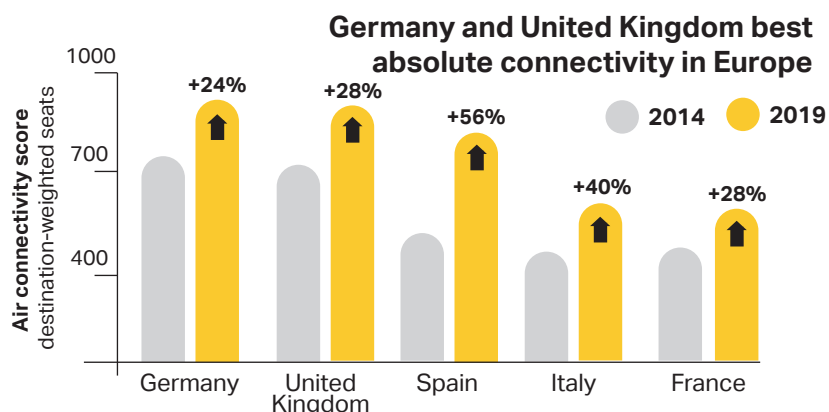
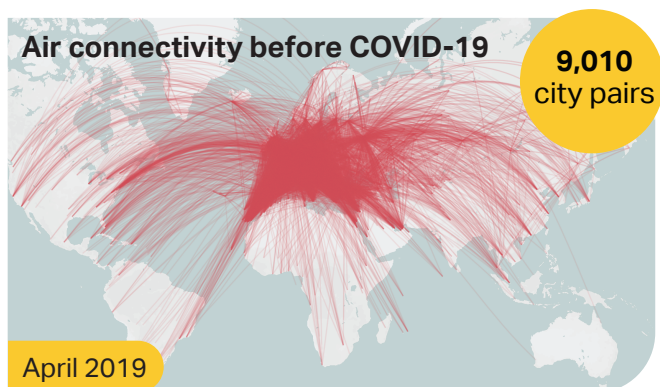
Air connectivity offers a lifeline for peripheral communities



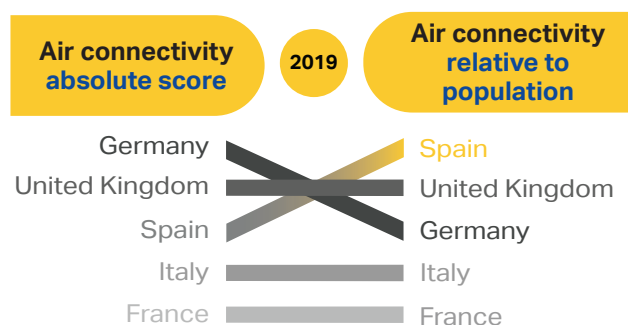
79 routes to remote communities and islands in the European Union interrupted in April 2020, with 14 not recovered. This represents 60% of all PSO routes.*

*PSO route = Public Service Obligation route

PRE COVID-19 AIR CONNECTIVITY



But it's relative connectivity that matters for economic growth



Iceland has grown the fastest among European aviation markets, in terms of air connectivity relative to population

Air connectivity relative to population

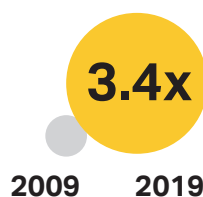


Key drivers

Favourable geographic location for Transatlantic passengers

Successful tourism strategy
Robust air transport industry

Favourable airport infrastructure policy



POST COVID-19 AIR CONNECTIVITY



City pairs figures rounded to the second digit.

