

COVID-19

September 2021 traffic data

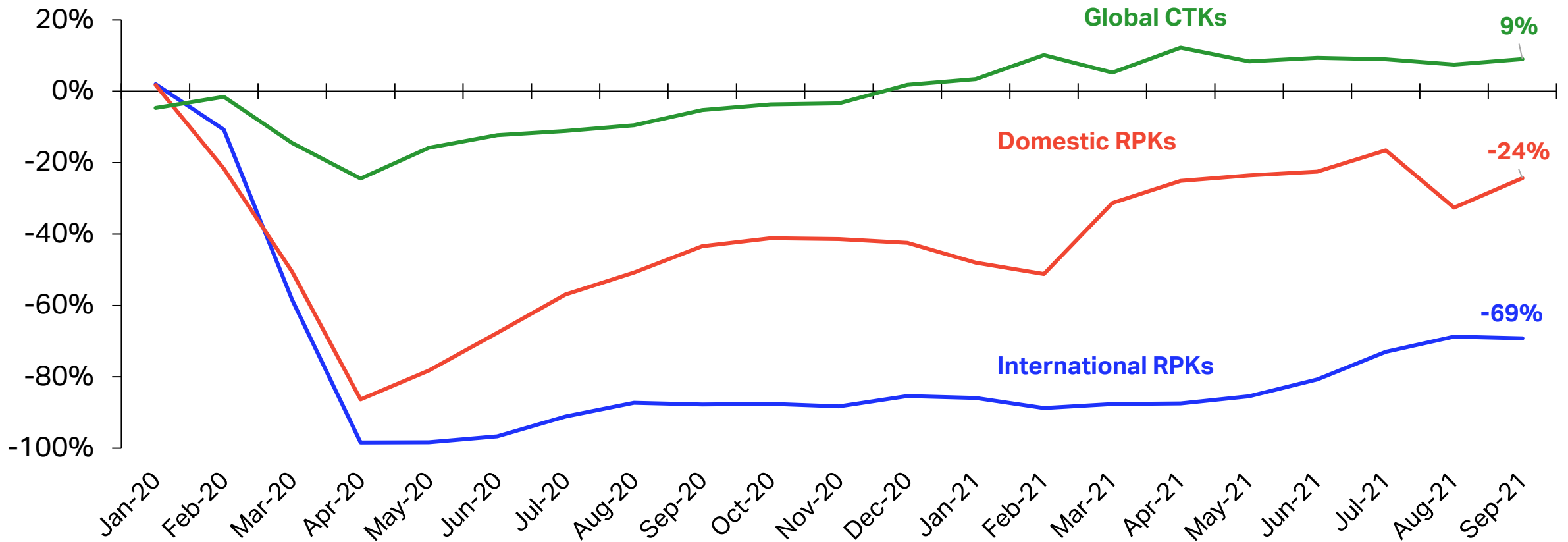
November 3rd, 2021



Cargo remains strong, domestic travel rebounds

Economy supportive but recovery is vulnerable to outbreaks

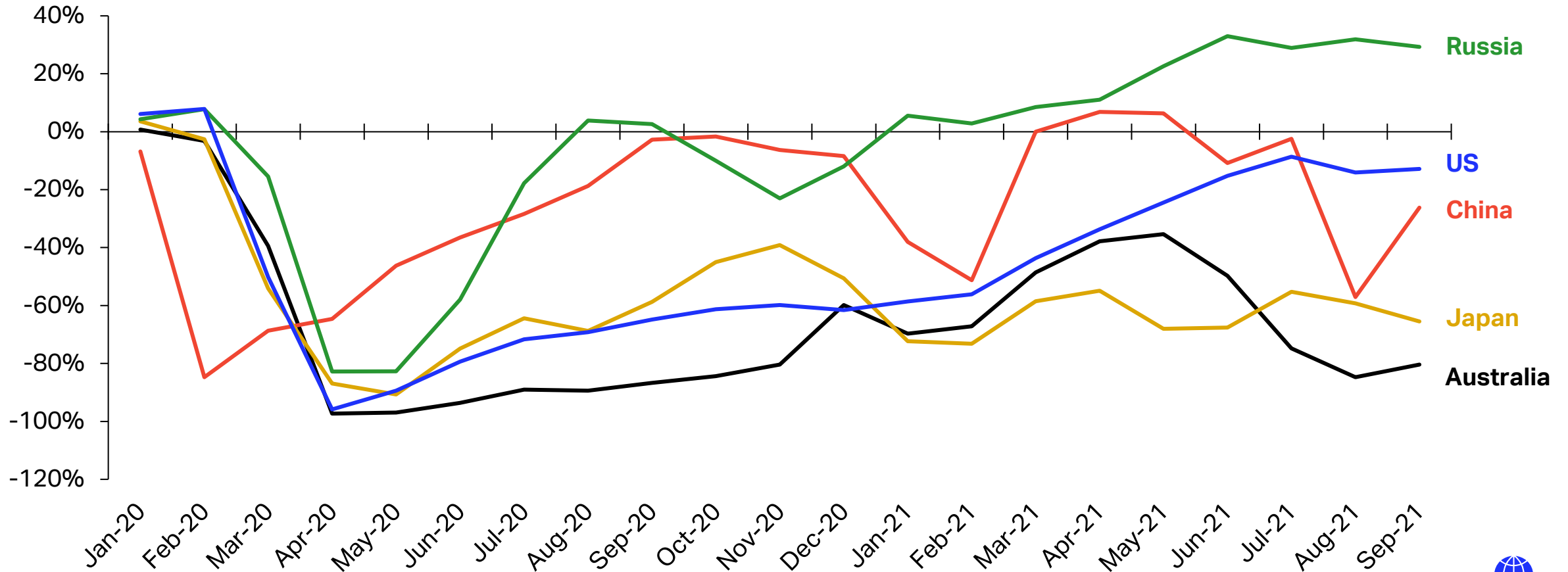
RPKs & CTKs, % ch. vs. the same month in 2019



Broad range of domestic outcomes

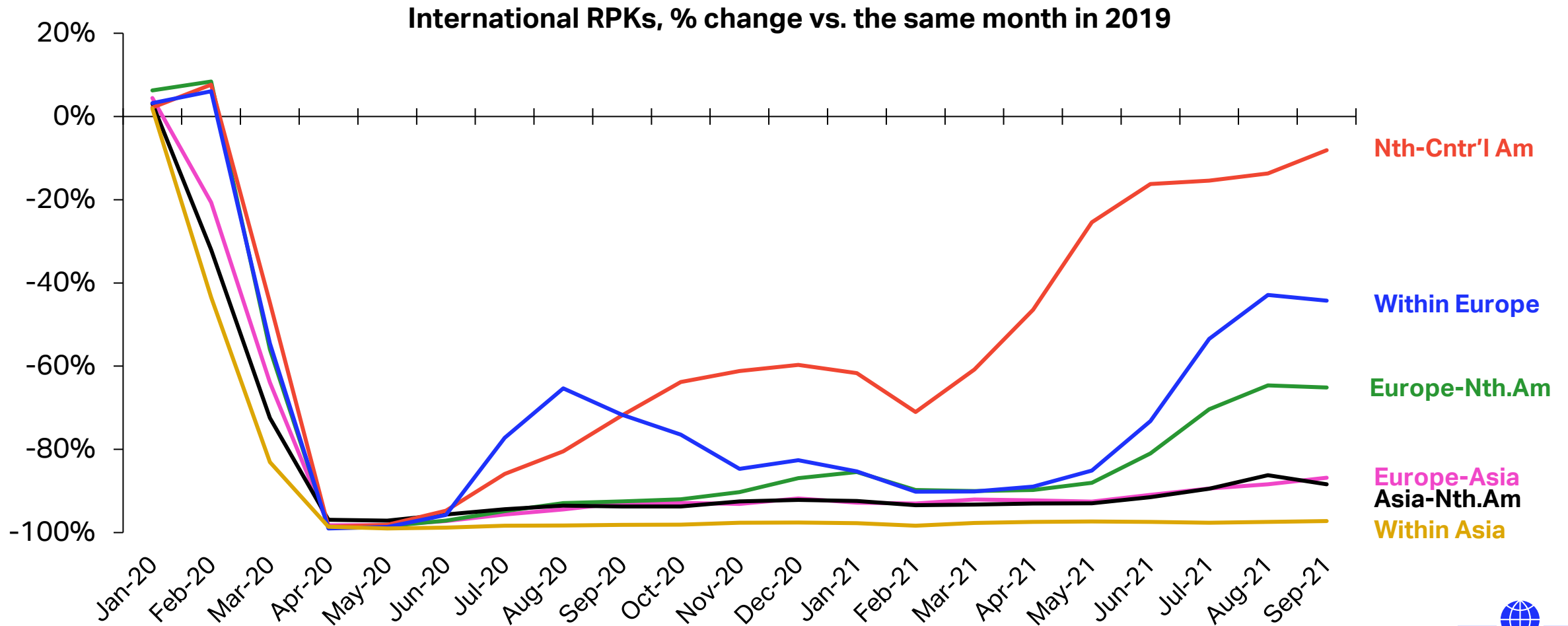
Dependent on government policy, vaccination, COVID waves

Domestic RPKs, % change vs. the same month in 2019



Recovery varies also across international markets

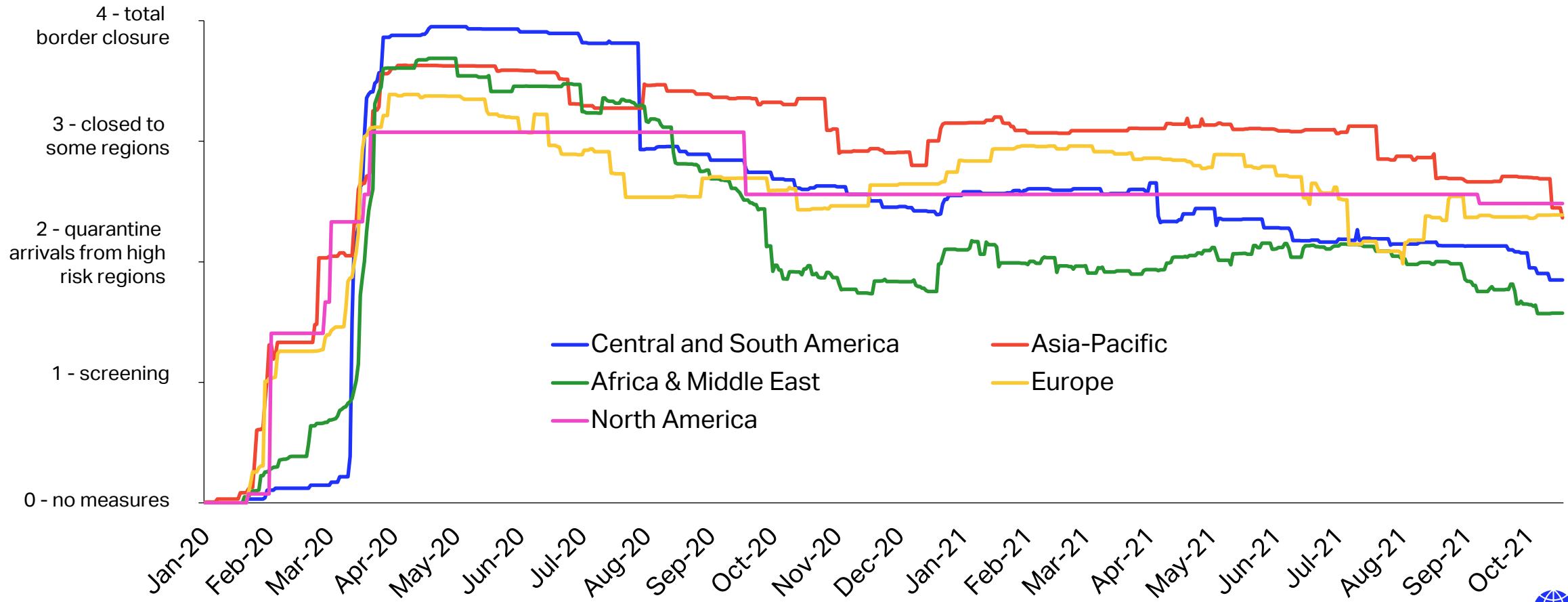
Driven by travel restrictions, importance of leisure and VFR



Travel restrictions remain elevated

However, some markets started to open up

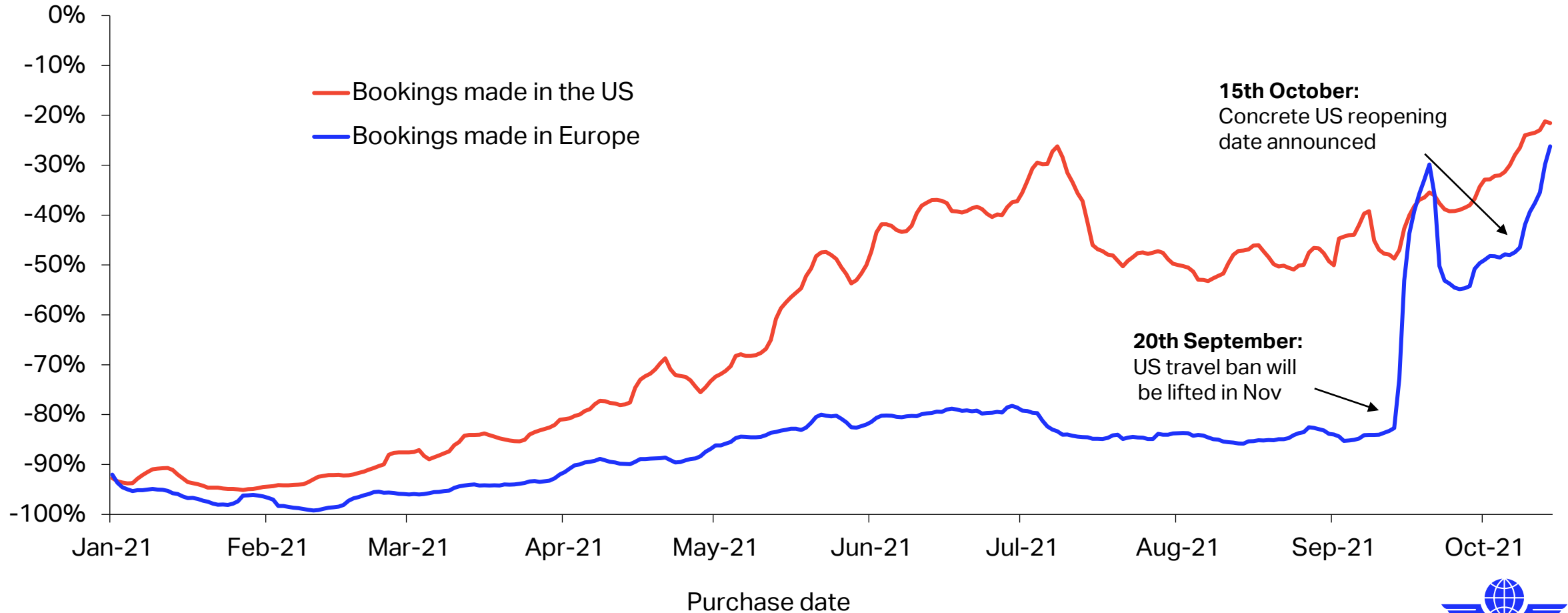
International travel stringency index weighted by population (Jan 2020 - Oct 2021)



Willingness to travel remains strong

Bookings rose sharply following US-Europe reopening

Bookings US-Europe, 7-day MA in % change vs 2019



Ticket sales rising globally

However, a large spike in air travel is unlikely in the near-term

Passenger net bookings, 7-day moving average
Indexed at Jan 2020 = 100

